

# COMMUNITY LINK

## CWLWM BRO

www.pentyrch.cc

*working for better communities*

PENTYRCH COMMUNITY COUNCIL



CYNGOR CYMUNED PENTYRCH

Gwanwyn Spring 2016

Rhif No. 95



## CARDIFF APPROVES LOCAL DEVELOPMENT PLAN PAVING THE WAY FOR THOUSANDS OF NEW HOMES IN THIS AREA



The Local Development Plan (LDP) for Cardiff has been approved by Welsh Government and was finally adopted by Cardiff Council on 28th January 2016.

This LDP effectively tells builders where in the City they can develop housing and facilities in future years. It sets out proposals to build 41,400 homes in key Strategic sites until 2026. Of those, about 11,000 of them could be in the North-West Cardiff alone. Many of the major sites allocated in the plan are on the "North-West corridor" which is effectively the A4119 Llantrisant Road and land all around it.

For us, it potentially redefines the village envelope in Creigiau, extending the village not only out to the A4119, but beyond that out to

the M4. It must be remembered however that this doesn't signify the start of building work. What it does do is to pave the way for developers to draw up and submit plans. These will still be subject to full planning scrutiny by Cardiff County Council.

### Where are these strategic sites?

The red shaded areas on the map show where new developments will be permitted. As far as the North West is concerned, site C is the dominant site. This site lies between St Fagans, Radyr and Rhydlafar. It allows for a minimum of 5000 homes with associated education, employment, retail and local amenities. Site D lies north of Junction 33 of the M4 and could see up to 2000 homes and major park and ride scheme. Finally site E,

South of Creigiau could see a further 650 houses as an extension of the village. Much more information is available on these; please contact the Community Council or one of your Local County Councillors if you wish to know more.

### So what about the infrastructure?

One of the biggest problems many have had with the LDP process was that transport planning seemed to fall outside its remit. There is nothing in the LDP to improve or add to the surrounding road network, which is already at capacity during peak times. That will be considered in future as developers put forward detailed planning applications and the area grows. The only transport additions put into the plan thanks

CONTINUED ON PAGE 2 ....



## Cardiff Approve the L.D.P. continued.....

local Community Councils representations relate to the Metro. The changes made mean that any future development cannot be built along potential Metro routes.

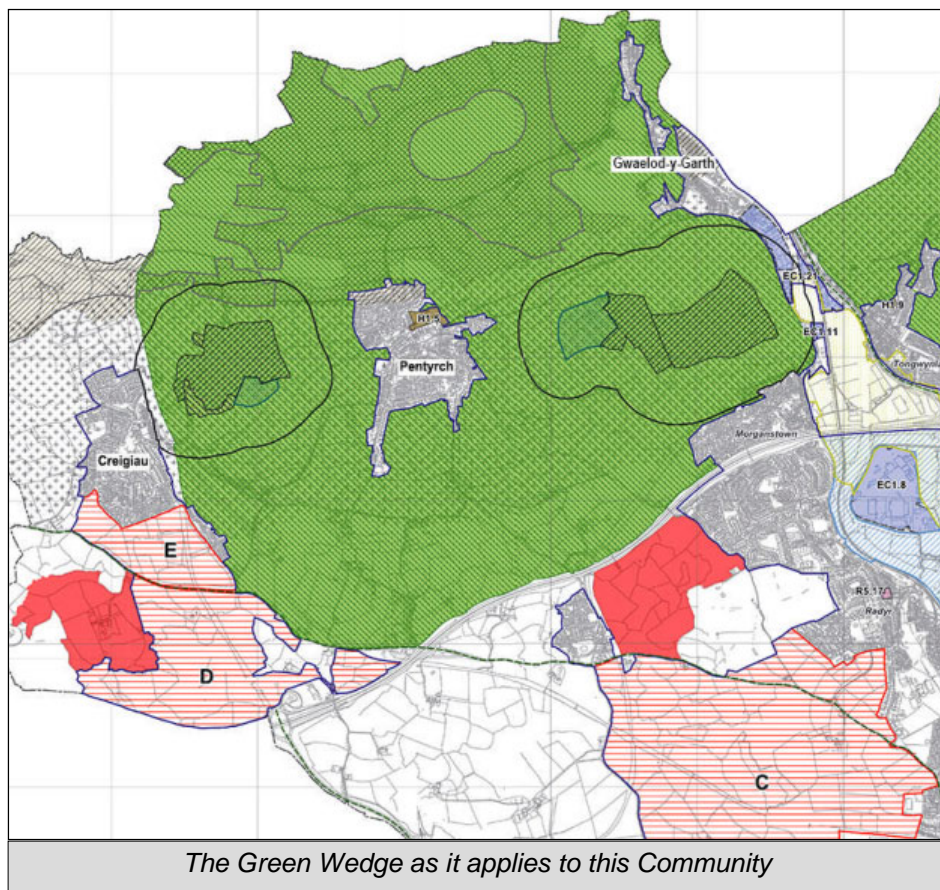
There is a high level plan for schools, retail areas and business districts. Many people have questioned the lack of details on specific things such as Doctors Surgeries etc. This finer detail will come with when planning applications are submitted.

### Why is the 50/50 modal split important?

One of the cornerstones of the LDP is that 50% of all journeys taken from new developments will be by sustainable means, eg bus, train, cycling, walking, etc. It was always difficult to see how this would be achieved in areas such as ours which are so heavily car dependent. Cardiff County Council acknowledge for the LDP to be successful this target is must be achieved. They recognise that the road network would not cope unless this 50% split occurs. Planning applications should not be approved unless they the County Council can demonstrate that this target is being achieved.

### Cardiff Capital Region City Deal

This deal was not a part of the LDP but was announced on the 15<sup>th</sup> March 2016. The UK Government has agreed a £1.2 billion City Deal for the Cardiff Capital Region in partnership with the Welsh Government and 10 local authorities: Cardiff; Rhondda Cynon Taff; Blaenau Gwent; Bridgend; Caerphilly; Merthyr Tydfil; Monmouthshire; Newport; Torfaen; and the Vale of Glamorgan. The Deal includes investment in the Cardiff Capital Region's infrastructure. A key priority for investment will be the delivery of the South East Wales Metro, and includes the Valley Lines Electrification programme. It is expected that the Metro will travel through to Creigiau.



### What about the Green Belt?

In the Welsh Inspectors report on the LDP a last minute change was made, to include includes a 'green wedge' rather than a 'green belt'. The council had originally proposed a 'green belt' to be set north of the M4, around the northern ridge of Cardiff. Within this area, development which prejudices the open nature of this land would not be permitted long term. This proposal was very widely supported however the Inspector favoured that the area be designated as a 'Green Wedge'. Whilst this does offer the same protection it will only be for the period of the plan up to 2026. This has come as a disappointment, but the Welsh Government's reason is to allow for future regional planning. A Strategic Development Plan for the south east region is likely to be adopted in advance of the end date of the LDP.

### How does Quarrying fit into this picture?

The LDP states quarrying at existing sites is preferred to shifting production to new sites. In addition deepening of sites is preferred to extending quarries. An application has been submitted to Cardiff County Council requesting an exception is made for Creigiau quarry. The application involves swapping the previously permitted area, which would remove ancient woodlands. It would involve the quarry excavating closer to Pentyrch. This is application is currently ongoing as they must still consider impacts relating to access, noise, air quality, landscape and visual effects, blast vibration, etc.

### Future monitoring of LDP and planning applications

The adoption of the LDP is not the end of a process but rather opens up the area where planning applications will be made. These applications will need to be scrutinised carefully to ensure that they strictly adhere to the direction set out in the LDP. All planning applications will be reviewed by the County Councillors and also at Community Council meetings. Residents are also urged to respond to applications. We must also seek to maximise all potential positive benefits to the community as a whole.

Edited by Cllrs Graham Thomas & Gavin Hill-Johns



**Fiona's**  
• GARDENS •

*Make your  
Dream Garden  
a Reality*

Tel: 02920 810262      Mobile: 07596 725883

### The One Stop Professional Gardening Service

- Not enough time to keep your garden looking good?
- New, overgrown or uncared for garden?
- Love your garden but unable to care for it?
- Need design or planting advice?
- Want seasonal colour all year round?
- Garden Confusion, Plant mysteries?
- Just need some advice from an expert?
- Over 20 years experience.



# Community Council Highlights

## Village Plan

For those of you who read the Minutes online or in the shops, you may have noticed that there has been a standing agenda item for a couple of months, named the Village Plan. The purpose of the Village Plan is to obtain empirical evidence of how people view our villages and what features they would like to see in the area in the next 10 or 20 years. Confidential questionnaires will be circulated to all the residences in the PCC area. The questionnaires will cover all aspects of village life and provide valuable information on what is important to each individual household, whether it be improved roads, health care, allotments, playgrounds, etc. In addition to household questionnaires, it is anticipated that questionnaires will also be issued to young people and local businesses.

Once the questionnaires have been received and the responses analysed, the PCC will be able to prioritise key areas for improvement. It will provide important evidence when to demonstrate to CCC, or whoever else seeks to foist 'improvements' upon the community what the residents see as their priorities. The PCC will then be better placed to influence future decisions that will be made in our communities.

The drawing up of the questionnaire is an enormous undertaking and the PCC begun this process. It is anticipated that the questionnaires will be circulated to all households with the summer edition of the Community Link.

**Please complete the questionnaire when it arrives and send it back. The future of your village may depend on it.**

## Welcome

In the last edition I referred to the short tenure of Bob Hannah, as the Administrative Assistant in the Council Offices. It now gives me pleasure to announce that Mrs Deb Hunt took up her new post on 1<sup>st</sup> December 2015 and has thrown herself wholeheartedly into her new role. She has taken on the onerous task of collating all things to do with the production of the Community Link and has suggested opening the Council offices on a Monday

## Creigiau Quarry

In the last edition of the Community Link I advised that the Community Council has opposed the application by Tarmac to re-open Creigiau Quarry. In so doing we joined the hundreds of other objections by both individuals and organisations. As a part of Council's initial objection we advised CCC that we reserved the right to submit further objections to any other issues that may be raised. The Community Council is indebted to certain individuals who are still fighting hard to raise awareness. We are also indebted to others who have brought their expertise on planning issues to the table to assist the Council in being able to formulate and articulate their further objections. The whole process is still under consideration and I am now told that it is unlikely to go before the CCC Planning Committee before May 2016. Please do not rest on your laurels, continue to object and support those that are leading the fight. This issue will affect us all.

## Village Enhancement

The Community Council set aside a budget annually for spending on Village Enhancement. This provides funds for hanging baskets and Christmas trees. The proviso for receipt of the hanging baskets is that they must be cared for and watered. The proviso for Christmas trees is that the trees must have lights upon them. Failure to comply with this request will mean that the following year hanging baskets or trees will not be provided. The same fund pays for plants for the planters in Creigiau and daffodil bulbs for the three main villages. We are always trying to obtain best value, which doesn't always mean the cheapest. Last Christmas a new supplier Sean Driscoll of Driscoll's Greengrocers, Fairwater was the most competitive. He celebrated by supplying the 12 foot Christmas tree to Pentyrch Surgery free of charge. Many thanks to him!

evening and Saturday morning, so that residents who are not at home during the normal opening times of the office can make use of the library and visit the museum. We certainly wish her success and hope that she enjoys her role with the Council.

## Mr Jim Prosser

It was with great sadness that we learned of the passing on the 28<sup>th</sup> February of former Creigiau Community Councillor Jim Prosser. He had served on the Council for 13 years before he retired from the Council at the elections of May 2012 suffering from ill health. During his time on the Council Jim served on a number of various committees, was Chairman of the Council and represented the Council on the Governing body of Creigiau Primary School.

He leaves behind his wife Meryl and boys Gareth and Jonathan to whom we pass our most sincere condolences at this very sad time

## Website

Does your club / society have a website?

The Council is in the process of building a new website. When completed we want to include as many links as possible to all the groups in our area. Please let us know your club's website address so we can include your group.

Even if your group does not have a web presence, please still forward the contact details.

## The Lowlife strikes again

This time last year we planted three memorial trees on the Garth Mountain at the request of a Gwaelod family in memory of their father. The trees were also paid for by the family. We prepared the ground and even went to the expense of making a cage so that the trees could be protected in their initial growing phase from the cattle and sheep that roam the common land. That was until an unknown person vandalised all three trees over the Christmas break 2014. I wrote about the incident in the Community Link published in the Spring 2015 and we were hopeful that it was a one-off act of vandalism. The Council undertook to replace the trees and on 22<sup>nd</sup> February 2016 new trees were planted. Over the weekend of the 27<sup>th</sup>/28<sup>th</sup> February 2016 all three trees were again vandalised. Unfortunately it seems we are not dealing with a one-off act but a concerted campaign to prevent trees being grown at this location. If anyone has any knowledge in relation to this incident I would be grateful if they contact me at the Council offices on 2089 1417 or email me at [clerk@pentyrch.cc](mailto:clerk@pentyrch.cc).



## Dog fouling

I made another plea to dog owners in the last edition to please pick up after their animals. I still get regular complaints about this unpleasant, selfish and illegal behaviour and I am at a loss to understand the mentality of these miscreants. To assist you all we have bought posters which have been put up to advise everybody that there is no such thing as a 'Dog-poo Fairy' who will magically pick up the dog-poo for you. This isn't rocket science, just pick up after your dog and don't leave it to others to do your dirty work.

## and foul dog owners

I have also received an impassioned plea from a local farmer in relation to people walking their dogs on the many public footpaths around the area. To be totally accurate I should amend that to say failing to adhere to the public footpaths around the area and failing to keep dogs on a lead around livestock, mainly sheep. The following is just a taste of the email I received.

***'Trespass is a continuing problem. The footpaths are clearly way marked and yet people continue to trespass. Gates are left open, fences are cut, litter and dog fouling is apparent. I treat all trespassers the same, if they have a dog running loose I ask them to put it on a lead, they quite often say that their dog is under control and yet are unable to put it on a lead. This year we have had a 3 month old lamb bitten that required antibiotic treatment. 2 sheep were killed, having been attacked by a dog. There is no compensation. Gates being left open is also a huge problem - by leaving fields empty for a period of time, you can control intestinal worm infestations. Resistance to chemical wormers is becoming an increasing problem for all farmers and field management is a natural tool to help combat this. If gates are left open, livestock are not slow to notice. Fields are also shut out for silage production; winter fodder is dependent on a good crop. If gates are left open trampling can seriously reduce the crop. The gates that are usually left open lead to the fields without footpaths. So why do people have to trespass, why can they not respect the fact that they are walking across private land and someone's business?'***

## School Lane

In the last edition of the Link the Council tried to explain its position in relation to School Lane, Gwaelod y Garth in the wake of increasingly bitter differences between opposing sides, misinformation and misunderstandings. It is clear that those differences remain judging from the attendance at the Public Sessions of the PCC. It was therefore welcome that County Councillor Gavin Hill-John advised the February meeting of the Council that he had had a meeting with Cllr Ramesh Patel and the County Officer, Matt Wakelam, in relation to School Lane. It is now intended that the site will be subject to investigatory work over the next few months to install full drainage along the line of the wood to allow a footpath to be created with a tarmac surface. There would be drainage under the footpath to ensure the surface was not washed away. The road itself would be scraped back to remove pot-holes and then levelled with a recycled aggregate material, which is designed for motor vehicle usage. There will be drainage ditches to take the water off the road surface. Cllr Gavin Hill-John intends going through the plans in more detail with those who will be most affected. Residents will receive details of the plans. He felt the scheme would provide adequate drainage, the surface of the road would retain its rural character, there will be posts separating the footpath from the road surface and there would be a safe route to School. He also added that drainage issues beyond the immediate problem would be looked at as well to ensure that solving one problem did not create another. He pointed out that he had an engineering background and felt that, whilst there were more details to come, the scheme provided a workable solution to resolve issues on both sides. Let's hope he's right!

***Why, when asked to return to the footpath or put their dog on the lead, can they not just say sorry? Why do they have to argue?'***

People are entitled to use the public rights of way and these are, mainly, footpaths across privately owned land. If your dog is not under control and attacks or worries livestock the farmer can shoot the dog. It's not the dog's fault but it could be yours if you don't adhere to the rules.

## Grants

Since the last edition of the Link, grant applications from within the Community Council area were considered at the December 2015 meeting. Grants awarded were Gwaelod y Garth Pensioners £100, the parish of Pentyrch and Capel Llanilltern £200 and the Creigiau Companions £100. The last remaining grant application for 2015/16 will be considered in the March meeting and this will be reported upon in the summer 2016 edition of the Community Link.

Grants are considered at the June September December and March meetings of the council. Should any community group or organisation wish to apply for a grant, applications should be made to me, preferably by email, ([clerk@pentyrch.cc](mailto:clerk@pentyrch.cc)), and should include the last set of accounts or financial statement.

---

## Community Council Library

**'WOW'** ~ This is usually the first word people use when they enter the library at the Council Offices at the Police Station, 1 Penueil Road, Pentyrch. This is then followed by **'I didn't know this was here!'**

This is despite that on each occasion I have written an article for the Community Link over the last 2 years I have specifically referred to the new library. The value of the library should not be underestimated. It only raised £48.80 in its first year of operation, a paltry sum, bearing in mind the tremendous asset it could be to the Community if only residents use it. That money received was added to the budget for Grants awarded to the Community. So what goes around comes around.

The Library is open Monday to Friday between 9am and 1pm. In addition a three month pilot scheme has been introduced to open the library and museum for two hours once a month on a Monday evening and a Saturday morning, for those residents who cannot access the facilities during the working week. The details of the additional opening times are in the notice boards as well as elsewhere in this link. It is always advisable to telephone us on 2089 1417 before travelling so as to ensure there is somebody here, as there is nobody to cover for our absence on holiday or illness. We wouldn't want you to have a wasted journey. The office staff look forward to seeing you.

# Planning Applications to 1<sup>st</sup> March 2016

**15/02504/DCH** Mr Funnell, 9 Field Terrace, Pentyrch, applied for the erection of a single storey, side extension. Permission granted 1/12/2015

**15/02508/DCH** Mr Davies, Ty Wennol, Heol-y-Parc, Pentyrch, applied for the extension and refurbishment of their existing detached 2-storey residential dwelling. Withdrawn 1/12/2015

**15/02541/DCH** Mr & Mrs Petts, 20, Penmaes, Pentyrch, applied for a first floor side extension with rear balcony. Permission granted 15/2/16

**15/02568/MNR** Mr D Herbert, D Herbert Builders Ltd, 378 Cyncoed Road, Cyncoed, applied for amendments to planning permission 15/00275/MNR relating to the residential development comprising four detached houses on land east of Cardiff Road, Creigiau. Permission granted on 14/12/2015.

**15/02577/MNR** Mr Dennis Rowley, Llwynrcwn Isaf, Brynteg, Llantrisant, applied for the removal of Conditions 4, 5 and 6 relating to code for sustainable homes of 14/1096/DCO in relation to land adjacent to Brynawel, Cardiff Road, Creigiau. Permission granted on 16/12/2015.

**15/02612/MNR** Mr Dennis Rowley, Llwynrcwn Isaf, Brynteg, Llantrisant, applied for the discharge of Conditions 9, 11, 12, 13, 15, 16, 17, 18 and 21 of 14/01096/DCO in relation to land adjacent to Brynawel, Cardiff Road, Creigiau. This is still under consideration.

**15/02702/MNR** Pentyrch Village Hall, Heol Y Bryn, Pentyrch, applied to change from a flat roof to a pitch roof over the foyer area. This is still under consideration.

**15/02801/DCH** Mr Jon Roberts, 11 Maes Cadwgan, Creigiau, applied for a rear single storey. Permission was granted on 11/12/2015

**15/02935/MNR** Mr. H. Wigley, Acapela c/o, Dan y Coed, Gwaelod y Garth, applied for the installation of a black flue for internal pizza oven and the installation of 2 velux roof lights flush with the existing roof at The Acapella Centre, Heol-y-Pentre, Pentyrch. Permission was granted on 16/2/2016

**15/02980/DCH** Mr Devenish, Hunters Gate, Pen-y-Waun, Pentyrch, applied for the discharge of Condition 5 (details of rear patio) of planning application 15/01720/DCH. This is still under consideration.

**15/02999/MNR** Mrs L Axe, 13 Penuel Rd, Pentyrch, applied for a non-material amendment to 15/00351/MNR for (a) alteration of the front window beside the front door in the porch to the increase depth by approx. 450mm to improve the symmetry of the design, and, (b) move the position and size of window to the first floor east elevation on land adjoining 13 Penuel Road, Pentyrch. Permission granted on 7/1/2016.

**15/03032/DCH** Mr Edwards, Downfield House, Llantrisant Road, Creigiau, applied to replace the existing building with no alteration in use and to use the existing access. On 8/1/2016 this was withdrawn and returned to the applicant/agent

**15/03074/DCH** Mr Phillip Smith, 5 Bronllwyn, Pentyrch applied for a two storey side & single storey rear extension & crossover widened. Permission granted on 16/2/2016

**15/03082/MJR** Redrow Homes Ltd, applied for the discharge of Conditions 4, 5, 6 and 9 of 15/02126/MJR for land north of Heol Goch, Pentyrch. This is still under consideration.

**15/03105/MNR** Mr P Jones, 18 Clos Halket, Canton, applied for the construction of a new dwelling on Plot 1 Holdings Lane, Capel Llanilltern, substituting proposed approved under permission 08/00528/N. On 2/2/2016 this was withdrawn by the applicant.

**15/03111/DCH** Mr Wyn Dormer, Capel House, Heol St Y Nyll, Capel Llanilltern, applied to demolish an outbuilding with minor alterations, construct new porch, double garage and driveway with highways crossover. at Capel House, Heol St y Nyll, Capel Llanilltern. Permission granted on 16/2/2016.

**16/00092/DCH** Mr & Mrs Shefferd, 7 Banc yr Afon, Gwaelod-y-Garth, applied for an extension to the rear. This is still under consideration.

**15/03113/MNR** Bovis Homes (South West) Ltd, applied for the non-material amendment to remove Conditions 29 and 30 (Code for sustainable homes) of 13/00836/DCO for land north of Heol Goch, Pentyrch. Permission granted 8/1/16.

**16/00159/MNR** Mr D Herbert D Herbert Builders Ltd, R/O 378 Cyncoed Road, Cyncoed, applied for discharge of conditions 2, 7, 9 and 11 of planning application 15/02568/MNR relating to land east of Cardiff road, Creigiau. This is still under consideration.

**16/00095/DCH** Mr & Mrs N Jones, 25 Cefn Penuel, Pentyrch, applied for a rear single storey. This is still under consideration.

**16/00106/MJR** –BDW South Wales - Goitre Fach Farm, Llantrisant Road, St Fagans applied for outline planning application for the demolition of existing buildings and residential development of up to 300 dwellings on site to include open space, landscaping, sustainable urban drainage, vehicular access, pedestrian and cycle accesses and related infrastructure and engineering works. This is still under consideration.

**16/00249/DCH** Dr Evans, Little Mill, Tynant Road, Creigiau, applied for the demolition and removal of an existing single storey upvc conservatory and replacement with a new construction comprising two storey structure and ancillary single storey wc/utility room. This is still under consideration.

**16/00307/MNR** D Herbert Builders Ltd, R/O 378 Cyncoed Road, Cyncoed, applied for the discharge of Condition 13 of 15/02568/MNR relating to land east of Cardiff Road, Creigiau. Still under consideration.

**16/00325/MNR** Mr A Smith, Creigiau Developments Ltd, 16 Gelliwastad Road, Pontypridd, for the discharge of Conditions 3, 7, 8, 10, 11, 13, 14 and 15 of application 15/01547/MNR at the former Pant Y Caerau Nurseries, Church Road, Pentyrch. This is still under consideration.

## Decided Applications from previous Link

**14/00303/DCO** Mr Rowley, applied in respect of land adjacent to Brynawel, Cardiff Road, Creigiau, for the discharge of Conditions 4, 5, 9, 11, 12, 13, 16, 17, 18, and 21 of 13/01511/DCO. withdrawn by applicant.4/1/16

**15/01547/MNR** Creigiau Developments Limited applied for the construction of 6 new detached dwellings with garages and associated works at the former Pantycaerau Nurseries, at land off, Church Road, Pentyrch. Permission granted 2/12/15

You can view planning applications on the County Council website [www.cardiff.gov.uk/planning](http://www.cardiff.gov.uk/planning) and follow the appropriate links

Use the 'View Planning Applications' to lodge comments on current applications



**PENTYRCH COMMUNITY COUNCIL  
CYNGOR CYMUNED PENTYRCH**

1 Penuel Road Pentyrch Cardiff CF15 9LJ

☎ - 029 2089 1417 📧 - clerk@pentyrch.cc

## Community Councillors Cynghorwyr Cymuned

Cllr Brynmor Jones,	59 Parc y Coed,	Creigiau,	2089 0887
Cllr Graham Thomas,	18 Parc-y-Fro,	Creigiau,	2089 2795
Cllr Nicola Howard,	1 Parc y Felin,	Creigiau,	2089 0984
Cllr Stuart Thomas	10 Parc y Felin,	Creigiau	2089 1812
Cllr Wynford Ellis Owen,	10 Queen Charlotte Drive,	Creigiau,	2089 2323
Cllr Chris James	33 River Glade,	Gwaelod y Garth,	2081 0369
Cllr Sandie Rosser	Brynteg, Main Road,	Gwaelod y Garth	2081 1811
Cllr Clare Bath	36 Bronllwyn,	Pentyrch	212323564
Cllr Christine Priday	7 Pantglas,	Pentyrch,	2089 1493
Cllr Jeanette Troughton,	1 Heol y Pentre,	Pentyrch,	2089 9331
Cllr John Harrison	26 Bronhaul,	Pentyrch,	2089 1296
Cllr Philippa Hill-John	3 Field Terrace,	Pentyrch,	2089 1387
Cllr Sara Pickard	5 Bryn yr Eglwys,	Pentyrch,	2089 2124

## Decided Planning Applications from previous Link *continued*

**15/01664/MNR** Mr Angell, Gwaelod y Garth Inn, Main Road, Gwaelod-y-Garth, applied for a 2-storey side extension (single storey to west/two storey to east) to provide additional residential accommodation at the upper ground floor and additional cellar/storage at the lower ground level. Permission was granted on 18/11/2015.

**15/01787/MNR** Redrow Homes (South Wales) Ltd applied in respect of land north of Heol Goch, Pentyrch, for the discharge of Conditions 2, 3, 6, 9, 10, 14, 15, 18, 19, 21, 22, 23, 24, 25, 26 & 28 of 13/00836/DCO. Full discharge of these Conditions granted 16/10/2015

**15/02167/MNR** Mr Board, Canada Lake Lodge, Heol Pant-y-Gored, Creigiau, applied to construct six subterranean rooms ancillary to the existing use of the site and business. Permission granted 21/10/15

**15/02243/MNR** Redrow Homes (South Wales) Ltd applied in respect of land north of Heol Goch, Pentyrch, for the discharge of Conditions 2, 3, 4, 7, 8, 9, 10, 13, 14, 15, 18, 19, 23, 24, 25, 26, 28, 29 & 30 of 13/00836/DCO. On 29/10/2015 a partial discharge of Condition(s) was granted.

**15/02237/MNR** Mr Axe, applied for the discharge of Conditions 2, 3, 8, 11 and 12 of 15/00351/MNR in relation to the proposed dwelling adjacent to 13, Penuel Road, Pentyrch. Withdrawn on 4/12/2015

**15/02264/MNR** Mr James, Springfield, Church Road, Pentyrch, applied for the discharge of Condition 2 (Landscape Works) of 15/01429/MNR. The Condition was discharged in full on 14/10/15.

**15/02126/MJR** Redrow Homes applied in respect of land north of Heol Goch, Pentyrch, for the development of 51 residential dwellings and associated works pursuant to outline planning consent reference 13/00836/DCO. Permission granted on 11/12/2015.

**15/02265/MNR** Mr James, Springfield, Church Road, Pentyrch, applied for the discharge of Conditions 3 (Levels) and 4 (Roof Slate) of 15/01429/MNR. The Conditions were discharged in full on 15/10/15.

**15/02402/DCH** Mr Cooksey, 1 Pantglas, Pentyrch, applied for two-storey rear extension and porch. Permission granted on 20/11/2015

**15/02439/DCH** Mr Thorne, 3 Parc-Y-Felin, Creigiau, for a front porch/garage extension at the front of the property & to extend the driveway. Permission granted on 18/11/2015.

**15/02545/DCH** Mr Walters, 19 Llys Dewi, Creigiau, applied for a two storey side extension. Permission was granted on 27/11/2015.

## Submitting Articles For Inclusion In The Community Link

When submitting an entry for inclusion in the Community link contributors are requested to take note of the following:-

- Articles should not exceed more than 250 words. If your submission is longer than this it may well be summarised or have to be omitted.
- The text of articles should be submitted either as a Microsoft Word document i.e. doc files or in rich text format i.e. rtf files or even as the main body of an email. Articles in other formats may well not be compatible and therefore lost.
- Articles should not be submitted as pdf files. Although these may be smaller to email they cannot easily be adjusted to suit the column sizes.
- Photographs should be submitted as photographs (jpg files) and attached to the emailed article. This is to try to ensure that we can provide our printers with the best available images to print from.
- The photographs should not be reduced in size or definition.
- They should never be submitted as part of a word file nor as a pdf.

Your co-operation in submitting articles in this way will be much appreciated. *Stuart Thomas Editor*

## Council Meetings

The Council meets on the 3rd Monday Monthly (except August).

Details of meetings are published in the Council's Notice Boards and in local Post Offices. Members of the public are always welcome to attend these meetings

Council Offices are open to the public 9.00am to 1.00pm, Tuesday to Friday.

## Cyfarfodydd y Cyngor

Mae'r Cyngor yn cwrdd ar 3ydd dydd Llun bob mis (heblaw Awst).

Dangosir manylion y cyfarfodydd yn Hysbysfyrddau'r Cyngor ac yn y Swyddfeydd Post lleol. Mae Swyddfeydd y Cyngor ar agor i'r cyhoedd o 9.00am i 1.00pm, dydd Mawrth i ddydd Gwener.

**Argraffwyd Printer**

**Xpedient Print Services, Princess  
Way, Swansea. SA1 3LW**



# County Council Notes

## Planning Takes Centre Stage For 2016

Over the past few months I have been working closely with the highways department within Cardiff Council and am pleased to inform everyone that significant progress has been made. There is still more to do however as it stands today the following issues are being dealt with:

1. The poor condition of the road surface on Penmaes, Bryn Siriol, Bryn Yr Eglwys and Clos Caewal in Pentyrch. This area has now been resurfaced!
  2. Driver feedback signs. As part of the development on Heol Goch it was agreed that two speed activated warning signs would be provided in Pentyrch. These signs have now been installed by the contractor. One has been positioned on the entry to the village by the new development and the other opposite the school which is a great deterrent. The position of the sign on Heol Goch will be monitored to ensure it is effective.
  3. The radius kerbs outside the Pentyrch Primary School are being removed and a drop kerb crossing will be installed making life much easier for pedestrians.
  4. Following extensive feedback from residents in Gwaelod regarding the hairpin corner on Garth Hill improved signage has been approved and will be installed. This will go some way to stopping inappropriate vehicles trying to use Garth Hill.
  5. Again following resident feedback the potholes on Mountain Road are being addressed shortly.
  6. There has been a long standing issue regarding the weight restrictions in Pentyrch. A new traffic regulation order is currently being prepared which will mean that the weight restrictions will come into force at the point the lanes meet Llantrisant Road. This is a lengthy process (between 6 and 9 months) but once complete will improve safety in the lanes.
  7. 20mph restrictions in Pentyrch. There has been a long standing concern regarding the status of the 20mph area in Pentyrch. Following a review of the area new signage will be installed with repeating signs throughout the village. I am now in contact with Go Safe to discuss enforcement options once these signs go live.
- In addition I have requested that the highways team carry out a comprehensive survey of the speed signage in Gwaelod Y Garth. I will provide an update on this shortly.
- If you have any concerns or queries please feel free to contact me.
- Gavin Hill-John 029 2009 8460  
[gavin.hill-john@cardiff.gov.uk](mailto:gavin.hill-john@cardiff.gov.uk)

It's already been a busy year in Council with the LDP in January (see separate article) and the Budget in February. Now we have the LDP approved, we already have some major planning applications in our area, including Plasdwr, Goitre Fach, Junction 33 of the M4 and of course the Creigiau Quarry planning application.

The Creigiau Quarry application is still on going. It won't be decided upon until at least May's planning committee meeting. Thanks to all our combined efforts of objection to this extension, Tarmac are having to work really hard to get this past planning. Areas the County Council are most concerned about are Highways, Noise, and crucially Health Impact where the Council want a full Health Impact statement. I continue to question the need to extend the quarry.

Earlier this year I was delighted to help one of our younger residents, Jena Quilter, present a Quarry petition on the steps of the Senedd to Andrew RT Davies, the Leader of the opposition (see photo).

With regards the major developments, the first phase of the potentially 7000 Redrow homes estate West of Fairwater, called Plasdwr, was approved in February for 630 houses near Radyr despite objections from many local Councillors and resident groups. And last month a separate application for up to 300 homes at Goitre Fach Farm on Llantrisant Road (again) very near Rhydlafar. Full details of the application are available online under reference 16/00106/MJR. I urge you to take a look and comment as it has no community facilities of its own and will depend entirely on using other village schools, halls, etc. Finally the Persimmon Homes application for 1500 houses north of J33 of the M4 is also still under outline consideration and now looks set to proceed. This will have a major impact on our rural communities which don't have the infrastructure to support such expansion.

The budget in January was also a very challenging time as Councillors had to cut £32m from its budget. Council tax will rise by 3.7%, there are rises in costs of school meals and school transport but planned cuts to arts budgets have been shelved following city wide protests. And also on the plus side money was set aside to repair pot holes, help the disabled and young people not in education or work, following a better than expected settlement from Welsh Government, increases in council tax income from additional properties and higher collection rates. The budget funding gap presented during the Councils public consultation fell from £46m to £32m. As usual, if you have any queries on



these topics or indeed on a separate issue, please do not hesitate to contact me on 07805 850812 or email [graham.thomas@cardiff.gov.uk](mailto:graham.thomas@cardiff.gov.uk).  
Cllr Graham Thomas



### HandyVan

HandyVan is a home safety and security service for over 50s in Cardiff and Penarth.

It is run by the charity Age Cymru with the support of Wales & West Utilities, which runs the gas network across the area.

#### What Age Cymru's HandyVan service can do:

- **Safety measures** – fitting smoke alarms, carbon monoxide detectors, grab rails and stair banisters. Also provide fall prevention evaluations.
- **Home security** – door and window locks, door chains and door viewers;
- **Energy efficiency checks** – installing draught excluders, radiator heat reflectors and energy efficient light-bulbs;
- **Small repairs** – putting up curtain rails, shelves and pictures, tacking down loose carpets, securing loose cupboard doors and repairing internal doors;

For more information about HandyVan, call 029 2043 1541 or email [handyvan@agecymru.org.uk](mailto:handyvan@agecymru.org.uk)

# Community Noticeboard

<b>Pentyrch Art Group Exhibition</b> 21 <sup>st</sup> March 2016 to 15 <sup>th</sup> April 2016 Garth Olwg Centre for Lifelong Learning	<b>Pentyrch Bowls Club Open Day</b> 23 <sup>rd</sup> April 2016 Details on Website	<b>Hilltop Theatre Company A Faulty Dinner</b> 23 <sup>rd</sup> April 2016- 7.30pm Pentyrch Village Hall Tickets Tel 07943 183169
<b>Pentyrch Bowls Club Cheese &amp; Wine Supper</b> 24 <sup>th</sup> April 2016 Pentyrch Rugby Club	<b>Pentyrch Hill Race</b> 26 <sup>th</sup> April 2016 Pentyrch Village Hall Registration 6.30p.m. Details Tel. 20891721	<b>Pentyrch Village Hall Family Picnic &amp; Exhibition</b> 30 <sup>th</sup> April 2016 12.30pm
<b>Pentyrch Tennis Club Quiz Night</b> 6 <sup>th</sup> May 2016 at Pentyrch Village Hall	<b>Pentyrch Tennis Club Open Day</b> 14 <sup>th</sup> May 2016 12.00p.m. — 3.00p.m.	<b>Pentyrch Bowls Club Spring Quiz &amp; Light Supper</b> 13 <sup>th</sup> May 2016 7.30p.m. Pentyrch RFC
<b>Cantorian Creigiau Concert</b> 21 <sup>st</sup> May 2016 St. Marks Church Gabalfa	<b>Gwaelod y Garth NGS Open Gardens</b> 4 <sup>th</sup> & 5 <sup>th</sup> June 2016 11.30am – 5.00pm The Old Post Office	<b>Hilltop Theatre Company Hi De Hi</b> 16 <sup>th</sup> 17 <sup>th</sup> 18 <sup>th</sup> June 2016- Pentyrch Village Hall Tickets Tel 07943 183169
<b>Creigiau Carnival Open Gardens</b> Sunday 19 <sup>th</sup> June, 11.00am - 5.00pm	<b>Creigiau Carnival Quiz Night</b> 21 <sup>st</sup> June 2016	<b>Cantorian Creigiau Concert</b> 24 <sup>th</sup> June 2016 Pontyclun Bowls Club
<b>Creigiau Carnival</b> 25 <sup>th</sup> June 2016 Carnival Theme "SPACE"	<b>Pentyrch Open Gardens</b> 2 <sup>nd</sup> & 3 <sup>rd</sup> July 2016 Visit 20 + gardens Tel 2089 1337	<b>NGS Creigiau Village Gardens</b> Sunday 17 <sup>th</sup> July, 11.00am - 5.00pm
<b>Pentyrch Cricket Club Wales u 17s V Staffordshire</b> 19 <sup>th</sup> 20 <sup>th</sup> & 21 <sup>st</sup> July 2016 11:00am daily	<b>Pentyrch Horticulture Cookery &amp; Craft Show</b> 3 <sup>rd</sup> September 2016 Pentyrch Village Hall Doors open at 2.00p.m.	<b>Gwaelod y Garth Craft Fair</b> 19 <sup>th</sup> & 20 <sup>th</sup> November 2016 Gwaelod y Garth Village Hall

## CREIGIAU CHURCH HALL



Situated in the middle of Creigiau Village the attractive Church Hall is available for Private functions, meetings, classes and children's parties

Large hall (66m by 33m) & stage. Modern Kitchen, garden and toilets  
Disabled access



For Rates & Bookings  
Contact 07528565499

## CONFUSED ABOUT COMPUTERS? WE CAN HELP!

PC REPAIRS, HEALTH CHECK AND ADVICE,  
HOME NETWORKING, WIRELESS, SECURITY  
VIRUS & SPYWARE REMOVAL  
OFFICIAL MICROSOFT PARTNER

# WORLDII

systems

FOR ALL YOUR COMPUTER RELATED PROBLEMS

Tel: Andrew 029 2084 2904





During World Book Day the whole school dressed up as their favourite character from a book. We had a competition between the classes, to create a display of their favourite book on the class door. The winner was decided by the author, Casia William, who did a workshop with Year 3 during the morning. Every class had a special visitor to read them their favourite story.



The Dosbarth Derbyn celebrated the Chinese New Year. Everyone loved tasting many delicious Chinese foods. They dressed up in traditional Chinese costume and had a colourful carnival around the school with instruments and a large red dragon.



Congratulations to Milly Ivins, Year 6, for winning the Schools Against Bullying competition. Milly's picture will represent the month of January and will be seen as a poster throughout city. She won £150 for the school and has chosen to buy some netball posts for the school. Diolch Milly!

Ysgol Gwaelod y Garth School Choir had the pleasure of performing in a concert to raise money Welsh Hearts Calonnau Cymru in Eglwys Dewi Sant. The performance was exceptional and they were honoured to share a stage with Trystan Llŷr Griffiths, Ellen Williams, Abercynon Choir and Ysgol Glantaf.

We celebrated St David's Day with our school Eisteddfod. Four teams competed in many competitions, including singing, reciting, art and dancing. It was a fun-filled day with lots of celebrating and cheering! The day ended with the Chair ceremony. Years 5 and 6 competed by writing a story. The winner won 50 house points and a miniature chair made by a parent, Mr Goodliffe. The chair was won by Ciara Williams, Big congratulations to her. Garth were the overall winners of the Eisteddfod.



We have had a busy and exiting term. The whole school were involved in the Big School Bird Watch in February. We had a visit from the RSPB as well as the wonderful Birds of Prey. We are very lucky in Gwaelod y Garth to have such a variety to birds to spot.

# CONTACT ELECTRICS

Domestic & Commercial Electricians

**Contact:**  
07879 414263  
07870 568870

**Inspection & Certification**  
**Consumer Unit Upgrades**  
**LED Lighting Specialists**  
**Fault Finding & Repairs**  
**Full & Part Re-Wires**  
**PAT Testing**



Email: [ask@contact-electrics.com](mailto:ask@contact-electrics.com)  
Web: [www.contact-electrics.com](http://www.contact-electrics.com)

\* **Qualified Wiring Inspectors**  
\* **NAPIT Accredited & Insured**  
\* **Electric Safe Registered**








## Pentyrch Horticultural, Cookery and Craft Show



**Some of the 2015 winners of the Pentyrch Horticultural, Cookery and Craft Show**

Make a note in your diary of Saturday 3rd September 2016 and resolve to enter something in this year's show. Look out for the programmes, from late May onwards and pick one up so that you can plan your entries in advance. Programmes will be available, at no charge, from a number of the shops in Pentyrch and from other outlets in the surrounding area, notably Pugh's Garden Village. Entry classes, particularly for the Craft section, have been revamped to accommodate the wider range of entries submitted last year. The committee has also introduced a fun class of any wonky/misshapen vegetable, together with a number of new children's classes.

### **New for this year -**

**All exhibit entries on the day will be free.**

Exhibits to be brought on the day between 10.00 and 11.30am. Show will open to the public at 2.30pm.

**Entrance to the show on the day will be £1.00.**

If you have any difficulty in obtaining a programme after May, please contact one of the following committee members: Sue Cragg 2089 0738, Bev Liney 2089 1748, Judith Smith 2089 1568.



***Does your home require a local Tradesman, providing a first class service?***

***We specialise in:***

***Doors, Floors, Stairs, Decking ,  
Log Cabins, Conservatories and Windows.***

***We also offer additional services:***

***Flat-pack assembly (Kitchens and Furniture)  
Shelving, Fascia and Soffit Boards.***

***Call us today for advice and  
a competitive quotation !***

***Telephone: 02920 890139***

***Mobile: 07809 201101***

***Email :- a.ware123@btinternet.com***

## **Memories of Childhood in Gwaelod y Garth**

A lot of people walk down to Lan nowadays. It is a lovely peaceful spot. You can hear the birds singing. Going there brings back memories. When we were young it was not so much a woodland – more a grassy glade. Years ago, you would have heard the voices of children, louder than the birds. We played rugby and football on that grass. The sun got in because it was open in those days. It was somewhere we got together. No one would have been out looking we just had freedom, time to ourselves.

Come to think of it, we used to run into the old mine workings. No thought of danger then. No thought of memorial either. We must have known about the pit but I am not sure we knew the story of its tragedy. Times were different. There was war. The old mine served us well as a shelter. During that time when the Germans were bombing, the school took us down the Lan for safety. Does anyone else in the village share this memory of the Lan as an air-raid shelter? Mr C Luxton, Gwaelod Y Garth

## Gardner Piano Specialists

- We are a local family firm established in 1953—dedicated to everything 'Piano'
- We are buyers and sellers of good quality new and second-hand pianos
- We sell digital pianos and stools
- We provide moving, tuning, full and part restoration services
- We supply upright, grand and baby grand pianos for event hire.
- We also stock music for piano covering all genres specialising in tutor materials and the examination curriculum. In addition, we have a regular weekly order service, so if we don't have it, just call and we can get it!



Please don't hesitate to contact us if there is anything we can help with.

266 North Road, Cardiff, CF14 3BL (029) 20390060

[www.gardnerpianos.co.uk](http://www.gardnerpianos.co.uk)

Email: [enquiries@gardnerpianos.co.uk](mailto:enquiries@gardnerpianos.co.uk)

## **Fred's Fares**

***The Reliable Taxi Service***

## **Luxury Travel**

for up to 8 passengers in an air conditioned vehicle

***Phone Fred on***

**07932 154122**



### DOG FOULING

Without doubt if social media is anything to go by this topic is of serious concern to many in Pentyrch. The continued failure of some dog owners to clear up after their dogs who foul pavements, grassed areas and/or other people's property is inconsiderate and unacceptable. Equally as bad, are dog owners who do clean up after their dog but then think because they have done so means that it is ok to leave their dog bags hanging from a hedge, bush or tree. Both practices are undesirable, unhygienic, unnecessary and attract a substantial fine. We encourage anyone witnessing such an offence to call 101 giving as much detail as possible e.g. date, time, location and description of the dog and owner, so that action can be taken.

### LITTER

This is another issue of growing concern. Like dog fouling this is particularly noticeable in the passageways linking various streets in our village. Quite apart from attracting a £75 fine it is unsightly and presents an unwanted image of our village and those who live in it. It is also environmentally unfriendly as most litter is recyclable. Again if you witness anyone committing this offence please call 101 with details of the date, time, location and a description of the individual if the person is unknown to you. PNW asked our Councillor Gavin Hill-John to organise some initiatives in the hope that we can quickly stop this problem. He has suggested we raise the matter with the Community Council so we will follow this through.

### VILLAGE WIDE MEETINGS

Those with long memories will recall that some years ago PNW used to organise village wide meetings on at least a yearly basis covering topics such as drug abuse, crime prevention etc. We are seeking to resurrect these meetings starting with a presentation by a guest speaker who specialises in the dangers of the internet and social media especially in relation to children. If we are successful in engaging the services of this person we will circulate details of the event. In the meantime if there are any subjects which are within our remit and which you think would be of interest to villagers then please let us know by leaving details via the Community Council office.

### POLICE PRESENCE

Continuing cuts to public services especially to Police budgets are resulting in fewer and fewer Police Officers, PCSO's and essential support staff. Locally we are seeing less of a Police presence due to fewer and constantly changing staff being called upon to cover an ever increasing area. We understand that the Traffic Police depot in Gwaleod at the bottom of Pentyrch hill is to close in 2016. This is used extensively and its high visual presence is without doubt of benefit to us all.

As long as these cuts continue there is a corresponding increase in the need for us all to be proactive and ever vigilant. We have to take increasing responsibility for monitoring and reporting any incident that looks suspicious or where a crime is being committed. Where it is the latter you should call 999 with full details i.e. location, description of individuals and vehicle registration details where applicable. Anything else should be reported to 101. Doing nothing is no longer an option.

### BIKE MARKING

Over the years PNW has organised several of these popular events. The next one will be on the 9<sup>th</sup> and 10<sup>th</sup> of April between 10.0 a.m. and 1.0 p.m. The venue is the forecourt of the Community Council Office in Pentyrch. Despite the name there is no damage to the bike concerned. It is simply a matter of putting your post code on a very strong protected self-adhesive wrap around label onto your bike. Alternatively, the Police can use a new device called 'Hermes' which allows the Police to electronically log serial numbers etc which are then put into a database which can be checked by other Police Forces so there is a better chance of returning property to its rightful owner. The same system can be used for logging details of mobile phones and laptops. We urge you to take this opportunity to protect your or your child's prized possessions. 10 minutes of your time can save much upset later.

### Join Us

If you agree, disagree with any of the above or, have issues that are of concern to you why not come along to any of our open meetings held the second Wednesday of every month at 7.0pm in the Community Council Office in Pentyrch. We would be very pleased to see you

### FLY TIPPING

This is a problem that just won't go away. The Quarry entrance halfway up Pentyrch hill continues to be a real eye-sore. The motorway bridge by DeCourceys is another popular dumping ground. Quite apart from being an unsightly offence attracting a substantial fine it forces Councils to divert (our) money away from essential services to fund the costly clearance. We ask you to help by firstly, getting details of where your waste e.g. tree cuttings, is to be disposed of if you have engaged one of the many tree clearance people that frequently ply their trade in our village. Secondly, to follow the example of one villager in Pentyrch who witnessed fly tipping in progress and immediately reported details to the Council. No doubt those offenders will think twice about doing the same thing again.

### WHO WOULD DO THIS?

In consultation with the Community Council trees had been planted, near the lay-bye on the Garth, in memory of a resident who had passed away. Much time had gone into preparing the ground and ensuring the trees would grow in the correct way however they were so severely vandalised that they had to be removed. When the Community Council heard about what had happened they funded the replacement of the trees. Sadly, within a couple of days of the new trees being planted these too were vandalised once more. It is hard to understand the mentality of someone who sets out to deliberately destroy trees especially in these circumstances and that they would be there for everyone to enjoy. If the offender(s) are reading this then please stop this mindless and selfish act. If you have an issue over these trees then address the problem in the correct manner. If anyone knows the identity of the offender(s) please let us know or call 101.

### Badminton Pentyrch Village Hall

We are a group of ladies who play Badminton twice a month on a Wednesday in Pentyrch Village Hall from 8 till 9. Why not come along and join us, if we had more members we can extend the time from 8 till 10. If you are interested please ring Ann on 02920 891567. If you haven't a racket we can always lend you one.

**Creigiau Carnival Open Gardens**  
Sunday 19th June,  
11.00am - 5.00pm;  
Plant sales and Refreshments.  
See Notice Boards for more info.

### **Community Link Cwlwm Bro**

Last date for items in the next issue is  
**24 June 16. 9:00am**

Articles should be limited to 250 words where possible and should be sent to the Council Clerk or to any Councillor.

e-mail: [clerk@pentyrch.cc](mailto:clerk@pentyrch.cc)

*The views expressed in the Community Link are not necessarily those of the Community Council.*

**Dyddiad olaf am erthyglau ar gyfer y rhifyn nesaf**

**24 Mehefin 16. 9:00am**

Dylir cyfyngu erthyglau i 250 gair os yn bosib a dylid ei danfon i Glerc y Cyngor neu unrhyw Gynghorydd.

e-bost: [clerk@pentyrch.cc](mailto:clerk@pentyrch.cc)

*Nid yw'r safbwyntiau a fynegir yn Cwlwm Bro o reidrydd yn rhai y Cyngor Cymuned.*

**NGS Creigiau Village Gardens**  
Sunday 17th July,  
11.00am - 5.00pm  
Gardens at Maes y Nant and Pant y Gored.  
See Notice Boards for more info.

### **Sad Loss**

Mrs Janet Inglis (Maes Y Dderwen, Creigiau) passed away on 27th September 2015 at home having bravely struggled with cancer for many years. She was a loyal WI member ever since she arrived in the village in 1986. Many of her friends knew her as a lovely lady of compassion and generosity, contributing to many charities particularly Velindre.

### **Henry Tudor Workshop**

On February 11<sup>th</sup> Creigiau Primary School Year 4 pupils thoroughly enjoyed watching and participating in a Henry Tudor workshop.

### **Warburtons Bakery**

In February Class 3 and Dosbarth 3 welcomed School Visitors from Warburton's Bakery who came to prepare healthy sandwiches and to discuss basic food skills with the pupils.

### **Creigiau School Eisteddfod**

On March 1st, we celebrated our St David's Day School Eisteddfod in the school hall. All pupils had been preparing various items to perform during the day. Pupils from each class were rewarded for their art work and literacy work. Pupils are welcome to wear clothing in their house colour or the traditional Welsh costume to school. A wide variety of instrumentalists took part in the competitions and judging the performances was very difficult, due to the high standard. After the points were counted Iestyn House were announced as the winner of the 'Eisteddfod Shield'. Mrs Lewis, school governor, presented the trophy to the winning captains.

### **Team Building Workshops**

In January all our Year 4 pupils took part in a team building workshop held in our school hall. During the workshops pupils learnt how to build tetrahedrons, they used their mathematical and science skills and worked in teams to build a 4 metre high tetrahedron! All pupils were completely enthused and they all thoroughly enjoyed the experience.

### **Plygain In Pentyrch Church**

On Tuesday, January 12th fifteen Year 5 and 6 pupils took part in the Plygain in Pentyrch Church. (Plygain carols are a specific variety of Christmas carols sung in the Welsh language). Many thanks to the parents who went to enjoy the evening and to Mrs Evans, Miss Thomas and Mrs Davies for preparing the pupils.

**Support your  
village and  
Join Mike Powell**  
(Ex Glamorgan & Kent)  
**playing cricket for  
Pentyrch**



**Calling All U9's, U11's and U13's**  
**Come and enjoy the great game;**  
**Full Equipment Provided!**  
**FREE Expert Coaching!**  
**ALL abilities Welcome...**



**Junior Enrolment Eve:**  
**Thur 14 April 2016**



**Call Luke Szpadt on:**  
**07850 488 800**

### **Ever Thought About Fostering?**

#### **Cariad**

- Small local fostering Agency
- Excellent support to our Foster Carers - all day every day
- Registered with the CSSIW - excellent reports
- Affiliated to all Local Authorities in South Wales
- Very competitive nightly fee
- Friendly extended family ethos



#### **Our Carers**

- Committed to making a difference to young people of all ages
- Great sense of humour and fun
- Flexible caring understanding and patient
- All shapes sizes situations and ages



#### **Interested?**

Call 01656 861650

Email [enquiries@cariadfosteringltd.co.uk](mailto:enquiries@cariadfosteringltd.co.uk)

Sony Technology Centre, Pencoed Technology Park, Pencoed Bridgend CF35 5HZ  
[www.cariadfostering.co.uk](http://www.cariadfostering.co.uk)

**Caring about Carers who care**

**BLUDSODDWR | INVESTORS  
MEWN POBL | IN PEOPLE**







### A SPECIAL VISITOR!

On Tuesday 23<sup>rd</sup> February we had a very special visitor to school. A 10 month old guide dog for the blind and his trainers visited our Reception and Derbyn Classes and our Year 2 Classes. The pupils had an opportunity to learn about the amazing work a guide dog does. A big thank you to Evie, Mrs Edwards and Mrs Stephens for visiting us and for giving our pupils such a special experience.



### Our Enterprise Group's Success

Four members of our Enterprise Group went to the Regional Final of this year's Enterprise Troopers Primary School Competition held at The Orangery, Margam Park. They had an opportunity to celebrate their achievements and showcase their excellent work to leading entrepreneurs. It was a very successful day for them. They were awarded the gold award for 'Business Engagement' and the gold award for 'Big Ideas for innovative product or service'. We are extremely proud of their achievements. The school thanks Mrs Hussey for giving them these memorable experiences.

### PC Sara and PC Durrani's Visits

During this term and the summer term two School Community Police Officer (one for the English Section and one for the Welsh Section) will visit all classes in school to deliver lessons on a variety of themes.



### Urdd Football Tournament

On Thursday, January 14<sup>th</sup> twenty Year 5 and 6 pupils went with Mr Balbini and Mr Snell to the Urdd football tournament in Sophia Gardens. Both teams played extremely well throughout the day and the teachers praised their commitment and courtesy. Well done boys! Thanks to all the parents who managed to go and support the boys on the day.

On Thursday, January 21<sup>st</sup>, twenty Year 5 and 6 girls went, with Mr. Balbini and Miss Millward, to the 'Urdd Football Tournament' held in Sophia Gardens. Both teams played extremely well throughout the day and it was evident that they all thoroughly enjoyed the experience. Excellent behaviour and attitude were displayed throughout the day. Well done girls! Many thanks to all the parents who managed to go and support the girls.

### Trip To Techniquet

On Friday Class 1 and Dosbarth 1 went on a school trip to St. Fagan's. They learnt many interesting facts about life years ago. They visited 'Gwalia Stores' and had an opportunity to play with old historic toys. This is Mrs Timothy's, our new deputy, first visit with the school and she said that the pupils' behaviour was excellent all day. Well done

### Shakespeare Workshops

On Thursday, 7<sup>th</sup> January all our Year 6 pupils participated in a Shakespeare workshop in school. The professional actors performed the play Henry VI which they are currently rehearsing in preparation for a performance in the Millennium Centre. Pupils had an opportunity to participate in warm-up exercises and a question and answer session with the actors. It was a thoroughly entertaining and interesting morning for all. I would like to congratulate every pupil in Year 6 for their impeccable behaviour - all the actors commented on their excellent behaviour and attitudes. Well done

### Destination Space Workshops

On Wednesday, January 27<sup>th</sup>, Techniquet visited to deliver 'Destination Space' workshops to our Year 5 and 6 pupils. They all thoroughly enjoyed the workshops and learnt new facts and information.

### World Book Day

On March 3<sup>rd</sup>, we celebrated 'World Book Day' in school. The pupils dressed up as a character from their favourite book. All pupils were given a £1 book token. We asked our KS2 pupils to bring a book they have read, and they do not want anymore, to school to give to another member of the class. We asked them to fill in a card explaining why they had chosen to give this book to someone else. Our hopes are that this will motivate the children to read more and is a great way to recycle books!



### Netball Tournament

Congratulations to the school Netball team for reaching the semi-final round in the Urdd tournament held in Cardiff on the 2<sup>nd</sup> February. Mrs Hussey and Mrs Stone were very proud of their achievement

### Cans Challenge

In January, six Year 6 pupils went to Llysfaen Primary School for the I-CANS Challenge', presentation. The aim of the challenge was that a £10 loan was given to the pupils and they had five weeks to make the most profit. The pupils developed their own entrepreneurial skills and raised money for our school and also for Velindre Cancer Centre. They ran a stall in our Christmas Fayre and sold 'Funky Flannels' before our Christmas Concerts. Thank you for supporting the work they did and help them make a profit of £80. Well done Enterprise Club for coming second! Quite an achievement! In February they visited the Lord Mayor's Mansion House and presented a cheque of £45 to the Lord Mayors Charity Velindre Cancer Centre.

## PENTYRCH PRIMARY SCHOOL National Categorisation 2015

In January the Welsh Government published the outcomes of the National Categorisation system for all primary and secondary schools. It groups schools into categories to illustrate how a school is performing regarding pupil standards, how effectively it is led and managed, the quality of teaching and learning and the level of support and challenge it needs to do even better.

The system is a three-step process:

### **Standards group:**

information is used to make a judgement using a range of performance data related to the school's standards graded from 1 to 4

### **Improvement capacity:**

an evaluation of the school's capacity to improve, taking account of the evidence about the standards and the quality of leadership, teaching and learning, resulting in an improvement capacity grade from A (most capacity to improve) to D (least capacity to improve);

### **Support category:**

amalgamating the judgement on the standards group and improvement capacity to decide the school's category, colour coded green, yellow, amber or red

The National Categorisation judged Pentyrch Primary School as follows:

Standards Group:	2
Improvement Capacity:	A
Attendance Group	1
Support Category:	Yellow

Pentyrch Primary has been judged to perform higher than Wales National averages, the Local Authority and the schools within the Central South Consortium.

Mrs K Jones Head teacher  
Pentyrch Primary School

## **Pentyrch Bowling Club 2016**

This year Pentyrch Bowling Club celebrates its "official" 25<sup>th</sup> Anniversary. Our club is at Parc y Dwrlyn playing fields. The bowling green is set among pretty gardens in view of The Garth Mountain.

Bowls is a great game. It is an inclusive sport for people of all ages and abilities. Played socially or competitively, it provides a fantastic way to relax, keep fit and socialise. Men and ladies play competitive matches in and around Cardiff and there are social games for those who just want to play to relax, particularly on Monday evenings.

We are always keen to welcome new players of all standards, from the age of seven upwards. Why not come and have a go? It's free to try! Qualified coaching and equipment are also provided at no cost.

## **Friends of Pentyrch School Association**

The new academic year kicked off with the Autumn Disco, where the children enjoyed dressing up and dancing to spooktacular tunes followed by a bake sale with some unusual offerings!

Our annual Christmas fair continues to be a huge success and fundraiser thanks to the support of local businesses, volunteers, the school, parents/carers, the children and the wider community. A huge sum of £1,676 was raised this year and has really helped our fundraising pot.

We recently hosted 108 children at a film night where everyone enjoyed cosying up with their friends in their PJs/Onesies and blankets, a successful event to be added to the annual calendar.

A special mention to Team Kings who continue to support our regular FOPSA meetings and contribute 25p from every Fish & Chips sold to FOPSA.

We have raised over £2,400 to date which has allowed us to contribute to the installation of the outside shelter alongside part of the GE grant and to start looking at the purchase of a modular play tower that can be enjoyed by children of all ages and built on each year.

Our attention now turns to the the Village Bake on 02<sup>nd</sup> May - please keep an eye out for further details and come and join in what was a very successful event last year.

If you are interested in joining FOPSA, or if you have any fundraising ideas that you would like us to consider, please contact Nic via email at [fopsachair@gmail.com](mailto:fopsachair@gmail.com).



## **New Forest Area**

The children of Pentyrch Primary now have a fantastic Forest Area within the school grounds thanks to a grant of £6,000 awarded by GE Healthcare.

October half term saw volunteers from all aspects of the GE Healthcare Cardiff site pitching in to help create the forest area. Weather was not on our side, but this did not dampen the spirits who enjoyed building insect hotels, fences, sheds and log circles. Teachers, Mr David and Miss Cadogan, also worked tirelessly alongside the volunteers.

Local contractors also helped out; Carpentry World donated the shelter and a carpenter to build it,

Veolia donated skips to remove refuse and Morris of Usk Gardeners cleared the turf to make pathways.

This new area is already providing a platform from which the school can teach the syllabus from a more stimulating environment, covering topics such as recycling, pollination, life cycle and healthy eating. It will also allow the opportunity for extra-curricular activities promoting an interest in sustainable living and for a Forestry School to teach strategies which develop confidence, emotional resilience, independence, language, communication skills, and increase levels of physical activity and mental well-being.

Despite the inclement weather, the children have been making use of the area and really enjoying the new surroundings. Highlights include an amphitheatre made out of logs, as a focal point for the class to sit with the teacher, a sheltered zone and paths that allow children to wander around the area when it is muddy.

Thank you to Mrs Zoe Rogers for her commitment in securing the grant. The new Forestry School is so impressive that the work undertaken won first prize in the GE UK & Ireland Citizenship Awards 2015 environment category.

For just £30 new members can play seven days a week between April and the end of September!

Many social events are open to non-members - a great opportunity to meet old and new friends.

### **Forthcoming events:**

Open Day Saturday 23<sup>rd</sup> April, Pentyrch Bowling Club – afternoon (time will be on website)

Cheese and Wine Sunday 24<sup>th</sup> April, 4pm at Pentyrch Rugby Club - – Spring Quiz & Light Supper.

Friday 13<sup>th</sup> May, 7.30 pm at Pentyrch Rugby Club

For much more information and details visit our website [www.pentyrchbowlingclub.co.uk/](http://www.pentyrchbowlingclub.co.uk/) and you can follow us on Twitter @PentyrchBowls.

For more information contact: Brian Ilbery 20891814

**Amgueddfa a'r Llyfrgell  
yn Swyddfa'r Cyngor  
1 Heol Penuel, Pentyrch  
ar agor  
Dydd Llun - Dydd Gwener  
9.00am — 1.00pm**

Paratowyd yr amgueddfa i ddod â sawl agwedd o hanes a thraddodiadau'r ardal at ei gilydd. Mae'r amgueddfa yn cynnwys llawer o hen luniau a mapiau a gwefan yn cynnwys rhagor o wybodaeth am hanes yr ardal.

**Ffoniwch 20891417  
cyn teithio**





### Technique Planetarium

As part of our topic 'Electric Rainbow' Technique came to visit us at school. They brought their huge planetarium to teach us about night and day, star constellations, planets and space. It was very interesting. We felt like we were in space. We learnt that it takes 365 days for the Earth to orbit the Sun and that the Sun is actually a really big star. We also enjoyed listening to lots of stories; our favourite story was about Leo the lion.

### Chinese New Year Workshop

On Wednesday 3<sup>rd</sup> February after lunch Katie taught us the dragon dance moves in the hall. She came to help us celebrate Chinese New Year.

After that we got into groups and next we walked around the hall to practise the three different types of dragon moves. We were then able to put on the colourful costume including the big dragon's head. We took it in turns to have a go at wearing the scary dragon's head.

Later we practised the parasol dance. We had to twist, turn and push the parasol up and down. It was so much fun!

When we finished Dosbarth Adar came to join us because our Mums and Dads had arrived to watch us perform what we had learnt.

Peter Burfitt     Dosbarth Daffodil

### RSPB Bird Watch

In February Foundation Phase took part in the Great British Bird Watch with the RSPB. Sarah Mitchell, who works for RSPB and one of their lovely volunteers, came to teach us about a variety of birds that we might see around our school.

We were lucky it was a cold but dry day so we got our binoculars, tally chart sheets and watched quietly for any birds that we could see. We also listened for different bird songs as you can tell some birds by their unique song. Some of the birds were very hard to identify because they are similar to other birds.

Our watch was very successful, we spotted a variety of different birds including a Robin. We had a lovely time learning about all the different birds. Thank you to the RSPB for letting us take part in this event.



*Mobile Fish and Chip Shop*  
Serving Traditional Fish and Chips

Opening times 5pm - 8.30pm     Pre-order and collect on 07758 161988  
Available for functions and events

Mondays - Creigiau Frog Pond  
Thursdays - Gwaelod, Viaduct Rd  
Fridays - Pentyrch Shops  
Saturdays - Creigiau Recreational Ground

[garthfishandchips@hotmail.com](mailto:garthfishandchips@hotmail.com)  
 [GarthFishandChips](https://www.facebook.com/GarthFishandChips)

### Pentyrch Tennis Club

The last 12 months have been a successful. April 2015 saw the opening of our new floodlights, we have more members playing regularly and have had great turnouts at all organised events.

#### League tennis

Men's and ladies' teams compete in the local South Wales leagues in both the winter and summer seasons. All three teams (Men's, Ladies' and Men's Veterans) are in positive positions to win their respective leagues and achieve promotion. The men will be in Division 2 this summer, whilst after narrowly missing out on promotion last season the women will be playing in Division 7.

#### Social tennis

Ladies' social tennis takes place from 5pm, every Tuesday. Men's social tennis takes place from 5pm every Thursday. The winter mixed social tennis takes place on Sunday mornings from 10am. Now that all 3 courts are floodlit, social evenings take place all year round!

We also host internal singles and mixed doubles box league competitions for members throughout the year. These are free and players of all ages and abilities are welcome to enter.

Other events include mixed doubles tournaments and social and fundraising occasions like our 'Quiz Night' on Friday 6th May at Pentyrch Village Hall.

### The Pentyrch Hill Race

On Tuesday 29<sup>th</sup> April 1986, 77 runners in club and international vests responded to the starting gun and sprinted to the first bend in the inaugural Pentyrch Hill Race a Fell Running Association graded Fell Race with a category of BM. In other words, B for medium difficulty and M for middle distance, (finishers claimed it meant you were Bloody Mad for attempting it!) At that time, the race was 7.5 miles long with various climbs totalling 1800 feet.

By 2005, our numbers shot up to 101 and have grown ever since, so that two years ago we had 250 and last year, 248!

We are grateful for the support we have had from St Catwg's Church, Pentyrch Rugby Club, St John Ambulance, the Police and the local farming community.

**The next race is on Tuesday 26<sup>th</sup> April starting at 7 pm at the Village Hall in Pentyrch.**

This is a serious race but you do not have to be a club runner to take part, and recently about 15% have not been affiliated to a club. I would suggest, however, that you are comfortable running about 9-10 miles in normal conditions and that you have included hills in your training. The race has now been reduced to 7 miles following road closures caused by landslides, and with a climb of about 1600 feet. The record time was set in 2006 at 42 mins 46 sec by Matthew Collins of Mynyddwr de Cymru, and in 2003 a time of 50 mins 54 secs by Ruth Pickvance of Swansea Harriers. The last person normally finishes in 85 to 90 minutes..     John Gough

### Coaching

We run junior coaching for all ages and abilities. Details of our full summer 2016 coaching programme will be available online next month.

#### Open Day 2016

As part of the Great British Tennis Weekend, we are running an open day on Saturday 14th May between 12 and 3pm. With free entry it will be a great opportunity for non members to see what the club has to offer.

For more information please visit our website [www.pentyrchtennis.co.uk](http://www.pentyrchtennis.co.uk), follow us on Twitter @PentyrchTennis, or, find us on Facebook.

### The effect of a good walk

In December 2013 I made a small commitment to myself, to walk everyday outside for a minimum of 20mins. Ever since I have walked EVERY day mostly for a lot more than 20minutes. It has changed my life, I feel happier, more resilient, calmer. It helps me think and it fills my heart with joy as I am regularly shown beautiful gifts when I am out in nature. As an aside I feel fit with none of the aches and injuries that niggled when I jogged a bit or went to the gym. I believe every one of us needs time outside and part of my mission in life is to encourage you to get out too.

In my work I am passionate about raising awareness of how to keep ourselves mentally and emotionally well. Most people have some idea how to keep themselves physically fit very few people know that they can keep themselves mentally resilient. Being out in nature is one of those strategies; gardeners and people that walk their dog are often happier than the rest of us. There is no such thing as the wrong weather only the wrong clothing. Get on your coat and your wellies and go and explore. Ruth Steggles [www.thefreshaircoach.co.uk](http://www.thefreshaircoach.co.uk)  
[www.freshairfridays.co.uk](http://www.freshairfridays.co.uk)

### Pentyrch Chess Club

Our two teams are competing well this season in their respective Divisions in the East Glamorgan Chess League. Pentyrch 'A' side is currently holding on to the third promotion slot in Division 2 but has top of the table clashes with teams in first and second places in the next matches. If they are as inspired by Dave Lewis's motivational team talks as they were in their recent 3-2 win against Penarth Pirates, they should continue on the promotion trail.

Pentyrch 'B', captained by Matthew Lunn, also have some serious challenges to deal with from rival promotion contenders in order to stay in the top three in Division 3. Having been briefly in the lead, the matches in the last quarter of the season will put the whole promotion enterprise to the test and, at this stage, no attempt at predicting the outcome could safely be vouchsafed.

Anyone who has an interest in joining the club would be most welcome. The chess club website is [www.pentyrchchess.co.uk](http://www.pentyrchchess.co.uk).

Enquiries may be made to Viv Martin, Club Secretary (20891402).  
Viv Martin

### Pentyrch W.I



On the 18<sup>th</sup> November 2015 Pentyrch W.I President Judith Smith, Pat Morgan and Hilary Nicholas planted this tree to commemorate The Centenary of the Women's Institute in Great Britain

We are always happy to welcome new members to our meetings. The next meeting on April 6th is a talk by Dr. Ian Morris on his trip to Nepal to raise money for Velindre Hospital.

**WA Harris**  
The Butchers

Quality Fresh Meat, Poultry & Cooked Meats...  
Since 1954

Retail & Catering Specialists  
Cardiff and Vale Hog roast specialist  
ring for availability and information

**Tel: 029 2056 1781**  
62 Plasmawr Road, Fairwater, Cardiff CF5 3JX

**AD COMPUTERS**

**which? Local**  
AD Computers  
Regional Winner - Wales  
2010

**Which?**  
Trusted trader

If your Computer is playing up,  
**DON'T PANIC!**  
Call me  
**Andrew**  
No Fix, No Fee.

Contact Andrew on  
02920892959 or 07803619266  
[support@adcomputers-wales.co.uk](mailto:support@adcomputers-wales.co.uk)  
[www.adcomputers-wales.co.uk](http://www.adcomputers-wales.co.uk)

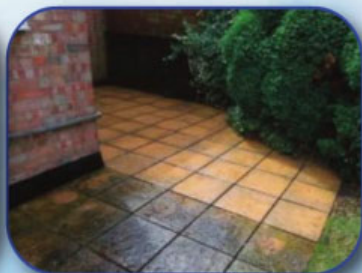
**10% OFF WHEN YOU PRESENT  
THIS ADVERT.**



# Is Your Driveway or Patio an Eyesore?



Is it covered in dirt, grime, moss, algae, grass or weeds?  
Is it time for a professional clean?



We clean any hard landscaped surface to return it to its former glory. We use state-of-the-art specialist cleaning machinery that keeps the mess on the floor and not all over your home!

**Call Derek on 029 2081 0501  
for a free, friendly quotation.**

## Penttyrch Village Hall

Do you or any of the family use the hall for socialising, learning or celebrating? Have you grown up with the hall always being there?

Penttyrch Village Hall is envied by all who come through the doors. It is a fitting monument to the efforts made 40 years ago by villagers of the time. How many of us now would undertake raising money for such a building? Weekly collections of small amounts of money, fundraising events at the

Double Diamond Club, Norman Follis doing a fundraising walk.

The Hall is run by a Management Trust on behalf of the villagers. Thanks to some very dedicated volunteers this has been the case for the last 40 years.

The pressures of everyday life mean volunteers are hard to find. We all have much to do (even those of us who have retired!) but just an hour or two once a month lets the village enjoy the social hub which is the Hall.

Would you like to give something back? Be a part of such an important part of Penttyrch village life? It simply involves a meeting a month (as short as we can make it!). You never know you might get to enjoy it!

We are looking for anyone with the interests of Penttyrch at heart willing to work with the committee.

If you would like to join us, please contact me, Barbara Rodd Tel. 20891584, or call at 31 Lon y Fro. It will be well worth it!



**Penttyrch Village Hall  
Needs You**

## Onward Christian Pilgrims

In the Hymn Book used by St Catwg's and St David's Churches, this is how "Onward Christian Soldiers" is presented. I find it odd and strange to be singing "Pilgrims". However, it may well suit what this article is about.

The Parish of Penttyrch has now extended: it is The Parish of Penttyrch and Capel Llanilltern, meaning two ancient parishes have been brought together under one administrative body and one incumbent, our vicar, the Reverend Michael John

At St Catwg's the reordering work that has been in planning for the last two years is about to start on 4 April. This will mean that the 12<sup>th</sup> century font will be moved out into the Nave; a kitchen will be installed in the NE corner behind oak doors; a glass interior door will take the place of the 1857 door there now, making the church brighter and taking away the barrier of a solid door; some of the memorial stones will be conserved and moved to the south wall; the Victorian font will be moved alongside the SE wall; the floor will be sanded, sealed and stained and the church will be redecorated.

Why is this happening?

We want the church to become more central to the needs of the community we serve. It is used by many community activities, from schools for curricular work, by Open Gardens, Food Bank, choirs; as I am writing this the Acapela Studios are using it for a recording of the music of an American composer; the church is open most days during the daytime for viewing, prayer, contemplation, and the opportunity to make a drink. Many villagers, visitors, cyclists and walkers call in. The start of our project was the removal of the pews (some of which are now in the chapel in Cathays cemetery) and the addition of chairs, which look very much at home. The stackable chairs give us flexibility for the various community uses of the building.

St David's changes are in the planning stage, but they will include the building of a toilet and kitchen facility at the back of the church. A toilet has been sorely missed (excuse the pun!) especially at times of weddings and funerals when many have travelled for several hours to get to

the service. The kitchen area will enable the after-service fellowship develop. It will also be a step in creating a meeting place within the village of Groesfaen that is not available at the moment. St David's is open to the public during daylight hours on most days, and many people are already visiting the church and appreciating the beauty of its interior.

The Church Hall, newly refurbished a few years ago continues to be used by the Creigiau community and an All Age Service is held there on the first Sunday morning of every month at 10.30. Everyone is welcome irrespective of your religious allegiance or none.

At St Elltelyn's the grounds and church yard have been tidied, new railings are to be installed and discussions are taking place to improve the interior.

Did you know that if you are a resident of the Parish, you are able to marry in one of our churches?

Why not visit the Parish website? [www.parihofpenttyrch.org.uk](http://www.parihofpenttyrch.org.uk)

John Gough

## CREIGIAU CARNIVAL 2016

The theme for the 2016 Creigiau Carnival is "SPACE"

Carnival week dates for 2016 are:

Creigiau Open Gardens: Sun 19<sup>th</sup> June

King and Queen Disco: Mon 20<sup>th</sup> June

Carnival Quiz: Tues 21<sup>st</sup> June

Carnival: Sat 25<sup>th</sup> June

We are also hoping to hold a community sports event in the run up to the carnival with activities for all ages and abilities – please look out for details in the next few weeks on our website, Twitter and new Facebook page.

Creigiau Open Gardens will be opening their gates again this year. If you would like to participate in this event then please contact Lesley Sherwood on 20890055.

Thank you to everyone who supports this annual event. The 2015 Carnival week raised some £6,000, all of which will be distributed by Creigiau 23 and CRAMC within the village for the upkeep and development of sports and recreation facilities, and to help our clubs, associations and other village groups.

Creigiau Primary School have been asked to design the picture for the front cover of the Carnival Programme. The programme acts as your ticket to the Recreation Field on the day and is packed with information on local services and contacts. If you would like to



*Berian Davies presenting the new kit to Youth team captain Sam Scanlon.*

advertise your services or promote your group or organisation then please contact us.

We would like invite groups from Pentyrch and Gwaelod-y-Garth to join our Space themed carnival procession

If you would like to join the organising committee or help out on the day then please contact us on 07740 123110 or at [creigiau-carnival@outlook.com](mailto:creigiau-carnival@outlook.com). For regular updates see our website at [www.creigiau-carnival.org.uk](http://www.creigiau-carnival.org.uk), follow us on Twitter [@creigiaucarnvl](https://twitter.com/creigiaucarnvl) and like us on Facebook.

We look forward to see you in June.

## Pentyrch Rugby Team receive new playing kit

The Pentyrch RFC Youth team has won the support of Move2here, a new local online estate agency based in Pentyrch.

Berian, Managing Director of Move2here, said: "We are extremely proud to support the future of Pentyrch Rugby Club

"The sponsorship is all about putting something back into the community in which we live and work, we hope by supporting them in their future endeavours and by giving the Tyrchs a new kit, it will help the continued growth of the team and club."

Pentyrch RFC Youth Team Manager Kelyvn Jones said: "We are extremely grateful and very excited to wear our new Move2here emblazoned kit, and hope that we can do both Berian and Gwyn proud when the boys wear the shirts. The new match kit has created an impressionable and unified identity with the team, our sponsor and the club we play for."

Youth team captain Sam Scanlon said "its great to be associated with this new local company and on behalf of the players, I'd like to thank Berian & Gwyn for their support - and wish them all the success they deserve with Move2here - you never know I might just buy a house from them in the future!"



EXCLUSIVELY FOR LADIES

FOR THE BEST IN  
AROMATHERAPY, REFLEXOLOGY,  
REIKI,  
THERAPEUTIC MASSAGE  
AND INDIAN HEAD MASSAGE

GIFT VOUCHERS AVAILABLE  
FROM £5.00

TELEPHONE  
(029) 2089 1007

## Pentyrch Community Council Library and Museum

1 Penueil Road, Pentyrch

We are open Monday - Friday  
9am - 1pm

Come and visit our well-stocked library, feel free to take away books for a small donation or bring unwanted books to us.

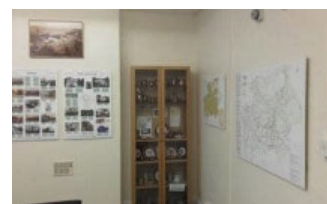
In response to recent requests we are running a trial of additional opening hours:

Mon. April 4th 6pm - 8pm

Sat. April 16th 10am - 12pm

Mon May 9th 6 - 8pm

Sat May 21st 10am - 12pm



The museum has been prepared to bring together various aspects of the history and traditions of the area. It includes many old photographs and maps and a website with further information about the history of the area.

**Please come and enjoy!**



### Penttyrch Art Group

The Art Group continues to flourish. All the members are busy preparing for our 21st Annual Exhibition at the moment. This will be held at Penttyrch Village Hall on Sunday, May 15th. The exhibition is open from 10.00 am until 6.00 pm and admission is free. We will be exhibiting over 150 new paintings, many of local scenes. Several members also make cards from their artwork, and these will also be available at the exhibition.

The small, ongoing exhibition at the King's Arms is proving to be very successful - this is changed every few months. Our next exhibition at Garth Olwg Centre for Lifelong Learning will be from March 21st until April 15th. We were delighted to be asked to exhibit again at the Village Hall Christmas Fair in December. The fair was very well attended and we had a great deal of interest shown in our paintings.

We look forward to another successful year and hope to welcome many of you to our exhibition in May.

Anne Peebles

### Garth Gardeners

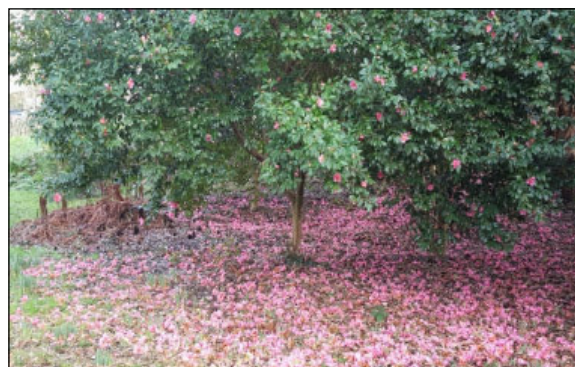
It's been a strange winter, mild but very wet. However, our meetings and challenges have kept our spirits up and we look forward to (hopefully) a fine spring and summer.

Our December social was very successful with *Linda Coombes* leading the singing. *The Twelve Days Of Christmas* was especially memorable.

Also, congratulations to *Maurice Banks* who won our *Autumn Challenge* top prize. Members are now doing their best to produce *gladiolus byzantinus* this spring.

Unable to get outside in January we were cheered by the visit of *Kevin Thomas* and his talk on "*Winter Interest in the Garden*". In February we welcomed *Paul Hervey-Brookes*, the internationally acclaimed garden designer. Paul described the many challenges one faces when building a gold medal garden including selling the idea to a sponsor in return for a budget of up to £250,000.

As usual we have a full programme



Roath Park this January

of trips this year including *Brobury House & The Weir* (both near Hereford), *Aberglasney* and *Thenford Arboretum* (Michael Heseltine's 70 acre estate). We are also looking forward to a three day tour of gardens in and around Dorset - already fully booked.

New members and visitors are always welcome. We meet on the third Friday of the month at *Penttyrch Village Hall*, browse our web site for details. Doors open at 7 pm, we would love to see you.

For more information, please contact **Bill Rodd (Chairman)** Tel 20891584 email: [garthgardeners@btinternet.com](mailto:garthgardeners@btinternet.com) <https://garthgardeners.wordpress.com/>



We're your  
new local  
estate agent

Are you thinking of moving?  
We Can Save You Money,  
**£1400!**

BASED ON THE AVERAGE PRICE OF A HOME IN PENTTYRCH & CREIBIAU

What have you got to lose?  
We do everything a traditional agent does...  
Just cheaper & we care.

Give us a call for a no obligation chat  
**02920 026 213**

 **rightmove**  
find your happy

It's your  
**HOLIDAY**



Tailored to your personal needs, providing the best  
value for your money, and with total financial protection





**Karen Williams**  
- Your local Travel Counsellor

**travel counsellors** ➔

With us...it's personal

 **02920 891384**  
 **07702 021103**  
 [karen.williams@travelcounsellors.com](mailto:karen.williams@travelcounsellors.com)

**[www.travelcounsellors.co.uk/karen.williams](http://www.travelcounsellors.co.uk/karen.williams)**

SALES . LETTINGS . MANAGEMENT . MORTGAGES . INSURANCE

## Your local, Independent and Family run Estate Agent

Looking for Rental Property in  
Cardiff and the Surrounding Areas

Ask us about our Guaranteed  
Rental Scheme

02920 811825

[PalmerandGunn.co.uk](http://PalmerandGunn.co.uk)



**PALMER & GUNN ESTATE AGENCY**  
2c Merthyr Road, Tongwynlais, Cardiff, CF15 7LF



### Creigiau 23

If you live in the Creigiau area, you have probably heard of us.

We are a firmly established organisation within the village, whose purpose is to promote fellowship, and to support the community by raising funds for local organisations and groups in Creigiau and the surrounding area.

We normally meet at the Golf Club each month for a dinner meeting, with a range of interesting and high profile speakers.

In addition to helping organise the annual Creigiau Carnival, we also organise the annual Vintage Tea, Boxing Day Walk and Santa's visit to the Church Hall on Christmas Eve.

Ever since our formation in the 1969, Creigiau 23 has donated thousands of pounds to local organisations and last year was no exception whereby we donated over £ 5,000.00 to local organisations which included:

Creigiau Church Hall Pentyrch Mini & Juniors RFC

Dynevor Gardening Association

To know more to visit our website [www.creigiau23.org.uk](http://www.creigiau23.org.uk)

Glyn Jones Chairman

### Creigiau 23

Os ydych yn byw yn ardal Creigiau, mae'n debyg eich bod wedi clywed amdanom.

Rydym yn sefydliad sydd wedi gwreiddio'n ddwfn o fewn y pentref gyda'r bwriad o hybu'r gymdeithas, ac i gefnogi'r gymuned drwy godi arian ar gyfer sefydliadau a grwpiau lleol yn Greigiau â'r ardal gyfagos.

Rydym yn cwrdd yn fisol am gyfarfod dros ginio fel arfer yn y Clwb Golff, i wrando ar ystod o siaradwyr gwâdd.

Yn ogystal â helpu i drefni Carnifal blyneddol Creigiau, a'r te prynhawn blyneddol, rydym yn trefni taith gerdded San

### CANTORION CREIGIAU

The choir is about to set off on an exciting trip to Amsterdam where we shall sing and socialise with other choirs from all over Europe. As the only Welsh choir taking part, we'll be representing our culture in the form of songs in Welsh and in English, finally joining with the other choirs to sing 'Tulips from Amsterdam' in Dutch.

Recently, five choristers, some new and some long-standing members, took part in a Radio Cymru programme where, over the course of a week, each spoke about their experiences in the choir.

A fund-raising tea party, to which all are very welcome, takes place at the home of Mair Roberts ( choir musical director) and her husband, Elwyn Tudno Jones, on the afternoon of Saturday 9th April. Delicious cakes will be served! Tickets are available from any choir member. Keep a look out too for our fund-raising quiz which will held shortly in Pentyrch, at a date to be decided.

On the choir's return from Amsterdam, we'll be rehearsing for concerts in the summer - in Usk on Friday 20th May for Urdd funds; the following evening, Saturday 21st May at St. Mark's Church, Gabalfa, Cardiff and on Friday 24th June at Pontyclun Bowls Club.

New members in all sections, especially Tenor and Bass, are very welcome to join our practice on any Sunday evening (before the end of June, when we break for the summer) at Creigiau Primary School at 7.30 pm. More details from any choir member.

Julia Winkler Chairman) [julesajwe@aol.com](mailto:julesajwe@aol.com)



July 2<sup>nd</sup> - 3<sup>rd</sup>  
2016

- 20-plus varied village gardens
- comfortable walking distance
- courtesy bus
- homemade lunches & light refreshments
- plant sales
- Entry £6 - children free

Pentyrch is just 2 miles north  
of M4 J32 (Cardiff North) CF15 9QL

For more details go to  
[www.PentyrchOpenGardens.wordpress.com](http://www.PentyrchOpenGardens.wordpress.com)  
or phone 029 2089 1337

Steffan ac ymweliad Sion Corn â Neuadd yr Eglwys ar noswyl Nadolig.

Ers ein sefydlu yn 1969, mae Creigiau 23 wedi cyfrannu miloedd o bunnoedd i sefydliadau lleol a doedd llynedd ddim yn eithriad gan y rhoddwyd dros £5,000.00 i sefydliadau yn y gymuned gan gynnwys y canlynol :

Neuadd yr Eglwys Creigiau, Sefydliad garddio Dynevor Rygbi Mini and Juniors Pentyrch

Os hoffech wybod mwy edrychwch ar in gwefan:  
[www.creigiau23.org.uk](http://www.creigiau23.org.uk) Glyn Jones Cadeirydd



## LAN OR LLAN?

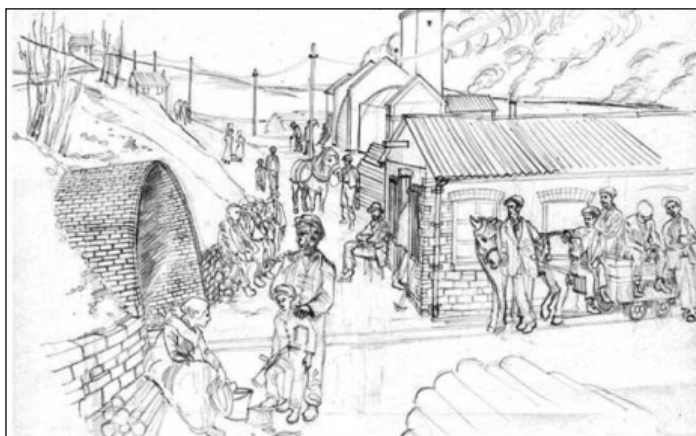
History of C19th marginalisation of the Welsh language makes grim reading. Children heard speaking Welsh in school were punished, the WN (Welsh Not) hung around their necks. English was taught at Booker's school in Bethlehem Cottages. It was considered the suitable medium for teaching, though headmasters had to get permission to use the 'Welsh Not' - it was never government policy.

In 1841, children working at the Lan were interviewed by the Commissioner. The 1842 'Report into Child Labour' says some could speak English, but few could read or write in either language.

At this time, Richard Blakemore, an English man from the West Midlands, owned the iron works on the Lesser Garth and the adjacent coal mines. An MP, he lived in Velindre House, Whitchurch. By 1875, the iron works and mines were owned by TW Booker, Jnr, Blakemore's adopted nephew. Booker hired an English Pit Manager, who was hated in the village.

Some old maps name Booker's Drift as 'coal level', some use 'Lan'; Lan is accepted and used by mining historians. The Masters were English and English dominated. The Welsh spelling, Llan, only seems to be on the sketch of workings prepared for the Coroner by William Galloway, a Scott, perhaps, sympathetic to Celtic languages.

The anglicised spelling, Lan, should not be seen as an act of ignorance — it is part of recorded history. Ty'n y Coed, house of Abraham Phillips, Booker's Overman, became 'Wood Cottage' at that time. Welsh suffered under English masters. The name 'Lan' symbolises the persecution of the language within the industrial history of a village.



*Sketch by Dan Peterson, of what the Lan Yard may have looked like*

## PENTYRCH CRICKET CLUB

PCC is actively seeking NEW MEMBERS of all ages and abilities. Please come and support your village team.

The club is in Division 2 of the South Wales Premier League and plays every Saturday throughout the season. We are looking for new members to boost both our first and second team league squads. We seek cricketers of all abilities and experience. The club also runs a range of junior teams for boys and girls of all ages in the Cardiff and Vale Junior Cricket League and again any new members would be very welcome.

The club is fortunate to have the coaching services of ex-Glamorgan batsman, Mike Powell.

Enrolment night for the juniors is on THURSDAY 14<sup>th</sup> APRIL 2016 6pm-7pm at the rugby club. Junior training nights are on Wednesday nights from late April. Ring Luke Szpadt on 07850 488800 for any more information. For any other information on the club, email our Secretary, Alan Siddall [alansiddall@yahoo.co.uk](mailto:alansiddall@yahoo.co.uk). Senior training nights are normally on a Thursday night throughout the season.

One for the diary — the club is once again proud to be hosting the WALES UNDER 17 team this season. It is a 3 day match against Staffordshire on 19<sup>th</sup>, 20<sup>th</sup> and 21<sup>st</sup> July 2016 with an 11am start each day. Bar, BBQ and refreshments available each day. A great chance to see some potential stars of the future on your doorstep.

## Thank you Doug & Colin

It is time for us all to remember what the Lan project is about. When I was a boy, we used to play down there even running in and out the tunnels that were open then. My father, Hartley Welsby, used to say it was a disgrace the disaster was not remembered with a memorial to the dead. Over time, the old mining site had become little more than an overgrown tip. In 2012 a few of us clubbed together to buy a plaque for the village hall. The rest is a story of hard work and dedication. Nine truck loads of rubbish and fly tipping were cleared by volunteers working with Richie from CCC.

Now, the LAN is a place where people walk every day. At the weekend, we installed a seat funded by local donations so there is a place to sit in the sun and think. This project was one of the best things that happened recently in this village. The horrible deaths underground of local men and children will never again be lost to history.

One last word. As a Founder Member of the Lan Memorial Project, I have to speak out on behalf of the village. We want to say thank you to two men Doug & Colin for their daily volunteering since 2013. This even earned them a National Award. Not many would have given so much. Recently they have both felt it necessary to resign. We want them to know the village is behind them. They will be sadly missed

## G. B Garden & Grounds GARDEN MAINTENANCE SERVICES

07398672050 / 02920219825

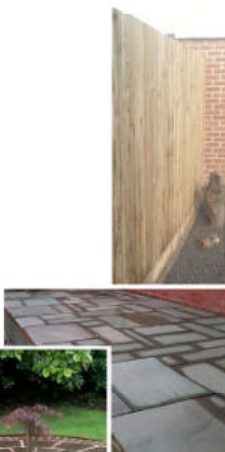
E-mail: [gbgardening@live.co.uk](mailto:gbgardening@live.co.uk)

[www.gbgardenandgrounds.co.uk](http://www.gbgardenandgrounds.co.uk)

Qualified, Experienced & Local Gardening  
& Grounds Maintenance Service

All aspects of gardening undertaken

- ✓ Lawn mowing
- ✓ Weeding borders & Flower beds
- ✓ Hedge Cutting
- ✓ Driveways, Patios & Paths
- ✓ Leaf clearance & Litter picking
- ✓ Cutting back & Pruning
- ✓ Tree work including Branch Felling
- ✓ Pressure Washing
- ✓ Fencing
- ✓ Rubbish Clearance



Contact Gary  
**07398672050**



Regular Maintenance or Single Services Provided

Registered Waste Carrier - Full Licences, Permits & Insurance Cover

# Shoozie Cute Ltd

Quality, Affordable, Everyday FOOTWEAR for  
Ladies, Men & Children



- From BIRTH to ELDERLY
- Shoes, Boots, Slippers & Wellies
- Accessories
- Footwear suitable for diabetics
- Wide fittings up to EEEE as well as Dual fits
- Fitting and measuring service before purchase
- Individual bookings as well as groups
- No Call out fee/No obligation to buy policy
- Hundreds of designs and colours to choose from
- Fully Insured

We travel all over South Wales to your residence,  
at a time convenient for you

Hayley Phillips

Tel: 01443 228 924 OR 07880 962 113

Email: [shooziecute@hotmail.com](mailto:shooziecute@hotmail.com)

## Come and join the celebrations!

Pentyrch Village Hall opened for the first time 40 years ago this year! It was a huge undertaking for such a small village at the time but thanks to a few forward thinking people- we have enjoyed this wonderful facility for 40 years. My children started Mother and Toddlers there only 5 days after we moved in, and progressed through Nursery, Brownies, Guides, ballet until recently coming home for a fundraising concert for our grandson. We have celebrated birthdays, wedding anniversaries, even weddings, even an MBE party!

The plan is to celebrate the last 40 years with a party and have a Family Picnic at the Hall on April 30<sup>th</sup> at 12:30. (Bring your own food and drink!) There will be an exhibition about the building of the Hall and photos of the activities which have taken place there, recently and over the years. If you have any memorabilia you think would be of interest, please let us know. We plan to have copies of the Garth Domain for sale, telling the story of the fundraising and building of the Hall. The Founder Members book will be open for you to see.

But true to the spirit of 40 years

## PENTYRCH VILLAGE HALL

We were delighted to hear from one local resident who has offered to look after the embankment garden to the rear of the car park.

Could you help us to manage the hall? There are a number of co-opted members of the Committee who will be retiring in March and we do need to find replacements to help us to look after the hall. We meet once a month for a hour or two. Please do volunteer to help. This great facility does not run itself without the dedication and generous help of local people.

Permission for the replacement of the flat roof with a tiled pitched roof has been granted. We will be going out to tender with a view to seeing whether the work can be done in July/August (when the hall is generally closed to most users) so as to cause minimal disruption

As the hall is forty years old this year we are planning a commemorative event. **Anthony Smith Chair**

ago there will also be fun!!! Please would you tell anyone who has moved out of Pentyrch about the lunch so they can come and join us? If you want to help, let me know!!

Barbara Rodd 2089 1584

## GRC Plumbing and Heating Gas Safe Registered

Graham Clements.  
Radyr.  
Cardiff.

029 20842798 07525 265354

[grcplumbing@hotmail.co.uk](mailto:grcplumbing@hotmail.co.uk)

- ♦ LANDLORD SAFETY CERTIFICATES
- ♦ REPLACEMENT BOILERS
- ♦ BATHROOM INSTALLATIONS
- ♦ FULL TILING SERVICE
- ♦ FULL CENTRAL HEATING INSTALLATIONS
- ♦ BOILER SERVICING
- ♦ WARM AIR REPAIRS AND SERVICING
- ♦ ALL PLUMBING WORK
- ♦ NO CALL OUT CHARGE
- ♦ FREE ESTIMATES

## ADVERTISE IN COMMUNITY LINK

Community Link is delivered to 2800 homes in the area and is a valuable source of information.

### Adverts

6cm x 10cm	£15
9 cm x 13 cm	£30
Colour	£60

Tel: 029 2089 1417

## HYSBYSEBWCH YN CWLWM BRO

Dosberthir Cwlwm Bro i 2800 o dai yn yr ardal ac mae'n gyfrwng ardderchog i rannu gwybodaeth

### Hysbysebion

6cm x 10cm	£15
9 cm x 13 cm	£30
Colour	£60

## [www.pentyrch.cc](http://www.pentyrch.cc)

Minutes of meetings of Pentyrch Community Council as well as back-numbers of Community Link are available on the Council's website.

Mae cofnodion cyfarfodydd Cyngor Cymuned Pentyrch yn ogystal ag ôl-rifynnau o Cwlwm Bro ar gael ar wefan y Cyngor.



### Pentyrch Open Gardens 2016

This year the Open Gardens weekend will be July 2nd & 3rd – we hope that the weather will be kind to us over the weekend and in the growing season beforehand. It was decided at the AGM by those who opened their gardens that this years profit will once again be a 50/50 split between Macmillan Cardiff & vale and the planting around the village. A cheque for £1250 was presented to them at the AGM.

I hope you will agree that the planters and troughs look great around the village and that you enjoyed the festive ribbons added over the Christmas period. It does cost a great deal of money to supply the planters and we have added some extra fundraisers to help with this. A quiz will be held on Saturday April 2nd 7.30 start to help with the summer planting. Please join us if you can.

If you are interested in opening your garden or helping in the hall or are willing to bake a cake please contact Chris & Helen Edwards on 029 20891337 or Chris & Jeanette Troughton on 029 20899331

### HILLTOP THEATRE COMPANY

Hilltop Theatre Company's spring production was 'Key For Two', on 10-12 March 2016, a hilarious English farce by John Chapman and Dave Freeman.

Our next event is 'A Faulty Dinner!', a dining experience with Fawly towers characters and comedy. Come and share some food and laughs with us, in this one off experience on the 23rd April at 7.30pm at Pentyrch Village Hall. Tickets are £20 and include a three course meal. Call the Hilltop Theatre Company box office on 07943 183169 to book tickets or a table. Already selling fast, this is one meal you don't want to miss!

Our summer production is 'Hi de Hi' on 16-18 June 2016, by Paul Carpenter and Ian Gower, adapted from the Original Television Series by Jimmy Perry and David Croft. This is the stage adaptation of the hugely popular TV series set at a fictional Maplins Holiday Camp. To order tickets, please call the box office on 07943 183169.

Hilltop would welcome new members. Anybody wishing to become involved with the group should come along to our rehearsal evenings on Thursdays or

### Craft Fair

Despite the weather our 3<sup>rd</sup> Craft Fair was a successful event. Visitors spent their time looking and buying from the 20+ stall holders, meeting old friends and new over a cup of tea with mouth watering home-made cakes.

This year we welcomed a number of new artists from nearby Pentyrch, Radyr and even Merthyr, who helped to ensure the annual event continued to offer something new and interesting.

We managed to raise £973.70 for the Medicine Sans Frontier charity for their incredible work around the world.

**This year the Fair will be held on November 19<sup>th</sup> – 20<sup>th</sup>  
Venue Gwaelod y Garth Village Hall**

Sundays, 7.30pm, Pentyrch Village Hall throughout the year (except August).

Further information about the group and all our productions can be found at [www.hilltoptheatre.co.uk](http://www.hilltoptheatre.co.uk), or join our e-mailing list by e-mailing us at [info@hilltoptheatre.co.uk](mailto:info@hilltoptheatre.co.uk)

### Creigiau Cricket Club

Creigiau Cricket Club is a friendly and welcoming cricket club who play their home matches at the Creigiau Recreation Field. The club runs 3 senior teams: two league sides on Saturdays throughout the summer, together with a friendly XI on Sundays. In addition we run a comprehensive junior section (boys and girls welcome) with sides ranging from U9s up to U15s.

Last season the U15s won the Cardiff & Vale Junior Cricket League (Division B). Congratulations to all the players involved throughout the season

If you would like to get involved, or know someone who wants to play or learn to play, please contact us!

#### Key Club Contacts:

Club Captain: Dafydd Taylor - [dafydd.taylor@gmail.com](mailto:dafydd.taylor@gmail.com)

Junior Cricket Peter Morgan [peter.j.morgan77@gmail.com](mailto:peter.j.morgan77@gmail.com)

Club Chairman: Dewi Evans - [dewigevans@hotmail.com](mailto:dewigevans@hotmail.com)

Our fixture list is online at <http://creigiau.play-cricket.com>



**The Vanilla Valley**  
CAKE AND KITCHEN EQUIPMENT

# Baking a Cake?



Visit our store in Nantgarw, Cardiff

- 🍰 Cake Decorating Supplies
- 🍰 Huge Range of Products
- 🍰 Experienced Helpful Staff



COLOURED ICING      NOVELTY CAKE TINS      CUPCAKE CASES

Unit 1 Cardiff Road, Nantgarw, Cardiff CF15 7SR  
☎ 0844 8569986      ✉ [sales@thevanillavalley.co.uk](mailto:sales@thevanillavalley.co.uk)  
**[www.thevanillavalley.co.uk](http://www.thevanillavalley.co.uk)**

# Bijou Wedding Cars

Tel 07854272387



Family run Business  
Based in Pentyrch  
[bijouwedcars@outlook.com](mailto:bijouwedcars@outlook.com)      Special Rates for residents

## Honour for Local Hero



Pentyrch resident Mr. Norman Poulson has been awarded the rank of "Chevalier de la Legion d'Honneur" by the President of France for his part in the Normandy landings which led to the eventual liberation of France from Nazi occupation.

The Legion d'Honneur is France's highest military award and was first established in 1802 by Napoleon Bonaparte.

Norman worked at 21 Army Group Headquarters as part of a team responsible for the planning of ammunition supplies for the invasion – this was tedious, detailed work carried out by pencil and paper as computers and electronic calculators did not exist. Norman served in Normandy where he landed on Juno beach. As the fighting moved further into France, Norman was left with the task of inspecting and evaluation German ammunition dumps along the coast of Normandy. When this task was completed, he rejoined his unit in Belgium and eventually ended up in Germany.

With the end of the war in Europe, Norman was posted to India where he was attached to the Indian Army Ordnance Corp where he served with the rank of Warrant Officer Class 1. He has vivid memories of his journey to India as it was horrific! He was transported by the RAF in the bomb bay of a Liberator bomber. It was a most uncomfortable experience due to the intense cold, noise and vibration, alongside the concern that the bomb doors in the floor did not appear to fit very well – all quite frightening!

## Open Garden June 11<sup>th</sup> & 12

At the time of writing when the sky is dark with imminent rain showers, and the ground is groaning with water and debris from visiting high winds it seems a life line to be looking forward to the **weekend of June 11<sup>th</sup> & 12** when once again **The Old Post Office in Gwaelod y Garth** will be opening its gate to welcome visitors.



If last year was anything to go by then it's a must for your diary. Whether you're an expert, an amateur or just nosey it's the place for you. Your experience will be greatly enhanced by indulging in the home made cakes and refreshments that are on sale.

All monies raised go to the supported charities of the National Garden Scheme.

**NGS OPEN GARDEN, The Old Post Office, Gwaelod y Garth, June 4<sup>th</sup>-5<sup>th</sup> 11.30 – 17.00 Entrance £3 Plants for sale**

## SCHOOL LANE A GOOD COMPROMISE

At the February Meeting of Pentyrch Community Council, Cardiff County Councillor Gavin Hill-John announced the plan for School Lane. It has been agreed and passed by CCC that a pathway is installed, with full drainage and a suitable surface for the unmade area of the Lane. Traffic calming measures are being discussed. While the plan falls short of full upgrade, it will solve drainage problems. There are no additional cost implications. The PCC voted in January to support the need to upgrade the lane.

Residents have been campaigning for repair of School Lane for three decades. In 2014, the WI hosted a meeting with Craig Williams in the Village Hall, where various options were shown. 450 people signed for upgrade. The WI presented the resulting document to CCC, Ramesh Patel and the Lord Mayor; the School Eco Group submitted their petition of 200 names in favour of upgrade.

Cardiff's 2015 Consultation, 'Connecting the Village', again demonstrated the wish for upgrade, though fewer residents voted. The MP, AM, School, School Governors, Evergreens, Village Hall Trust and Community Action all support upgrade, as did candidates from every party in the 2015 By-Election. CCC's compromise plan is

welcomed by all groups.

The repair of School Lane has created controversy. There are differing views. The plan agreed by Cardiff is a good compromise, taking into account these differing views. Many people worked in the campaign for up-grade. Our thanks to County Councillor, Gavin Hill-John, who honoured his election pledge to see it through.

Marc Palmer, Chair CA, Norma Procter, Jennifer Hammett, Gill Hammett, Peter Hammett.

# RPS

Property Services



- ❖ Gas Installations
- ❖ Electrical
- ❖ Plumbing
- ❖ Heating
- ❖ Solid Fuel
- ❖ Wood Burning Stoves
- ❖ Full Bathroom Installations

**For Electrical - 07731 862 618**  
**For Plumbing - 07731 869 009**