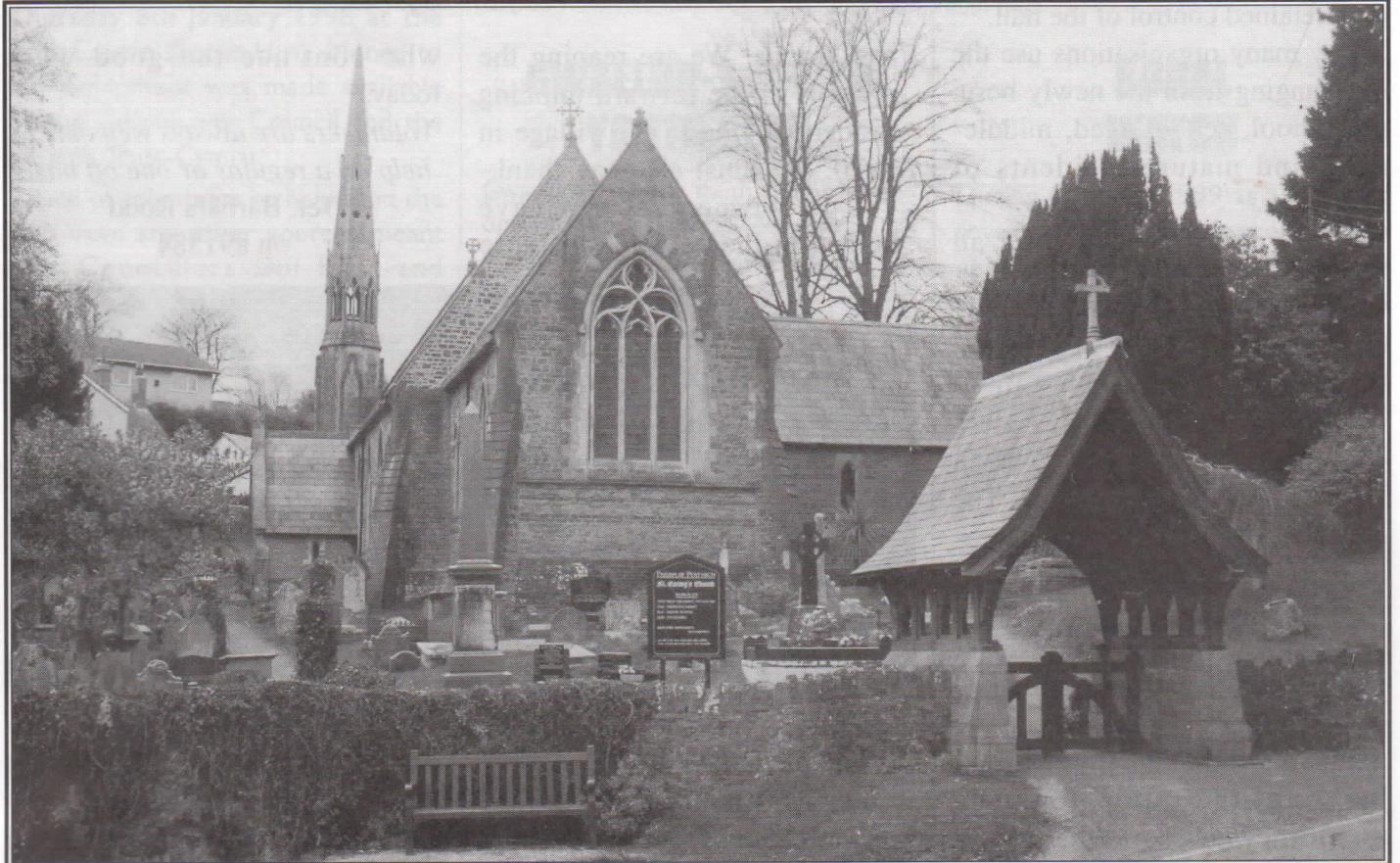


COMMUNITY LINK

CWLWM BRO

2000

No. 46 DECEMBER/RHAGFYR 1999



Christmas Message

The Millennium celebrates 2000 years since the birth of Christ. It is a chance not to be missed. The Christian Churches have an opportunity to witness to Jesus Christ and to the meaning which he gives to us as individuals and to the World as a whole. It is he alone who gives hope for the new era - the new Millennium.

With the celebration of Christmas the Church throughout the World will usher in Jubilee 2000. The Holy Year will begin and continue through to the Epiphany, 6 January 2001. It is a unique time to be living through. In 1994 Pope John Paul II reminded the Church of the great biblical tradition of the Sabbatical Year, every seven years and of the Jubilee Year, every 50 years. These were opportunities for justice, the remission of debt, a fresh start for all the peoples of the World.

As we prepare for Christmas, let us take some time out from the seasonal rush to consider this great moment that is about to unfold. The Christmas message announces the theme of peace that runs throughout Lukes Gospel. Peace is not merely the absence of hostility. It includes wholeness, well being, prosperity and security.

During the Jubilee 2000, may Jesus Christ guide us and our family and friends into the ways of peace, may there be a fresh start for all God's people through the establishment of true justice.

May I wish you all a happy and blessed Christmas and a happy Millennium year.

Yours in Christ Graham Holcombe Vicar of Pentyrch



COUNCIL MESSAGE

As we approach the year 2000 we have in this issue of the Link tried to record the wide range of social activity available within our community.

On behalf of all the Community Council may I wish one and all a very Merry Christmas and a Happy New Year 2000.

Wrth i ni gyrraedd y flwyddyn 2000 rydym wedi ceisio yn y rhifyn hwn o Cwlwm Bro gofnodi'r ystod eang o weithgareddau cymdeithasol sydd ar gael yn ein cymuned ar gyfer pawb.

Ar ran yr holl Gyngor Cymuned dymunaf i chwi i gyd Nadolig Llawn a Blwyddyn 2000 Newydd Dda.

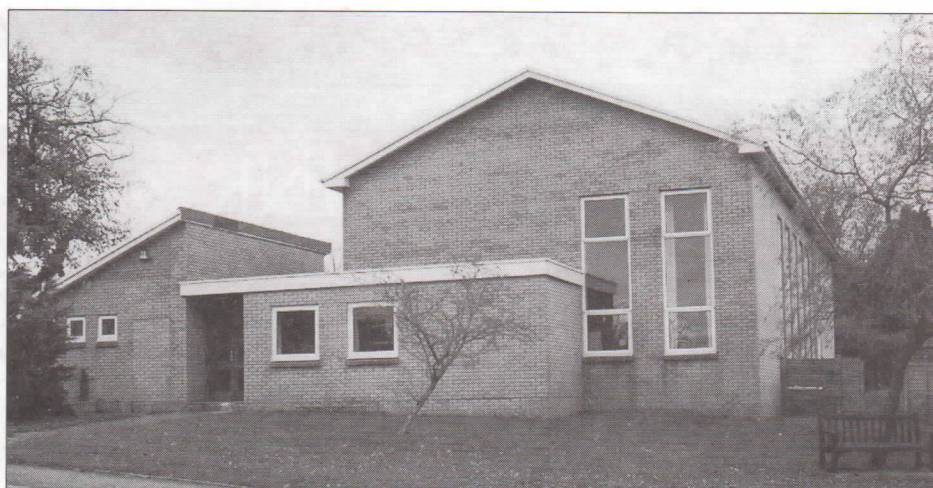
Gill Rees - Chair of Community Council
Cadeirydd Cyngor Cymuned Pentyrch

Pentyrch Village Hall

Pentyrch Village Hall is distinct among community centres. The Official Opening was on 26th April 1976. The crusade began at a public meeting in February 1970 and a sum of thirty shillings was paid into the bank to start a building fund. Two hundred people joined the Founders scheme raising over £2000. The people of Pentyrch raised such a large amount of the capital project they retained control of the hall.

Today many organisations use the hall ranging from the newly born, pre-school, school aged, middle-aged and mature residents of Pentyrch.

The hall offers something for all



Pentyrch Village Hall

age groups. We are reaping the rewards of the forward thinking residents living in the village in 1970. We must also say thank-you to the people who have helped in the past and to those

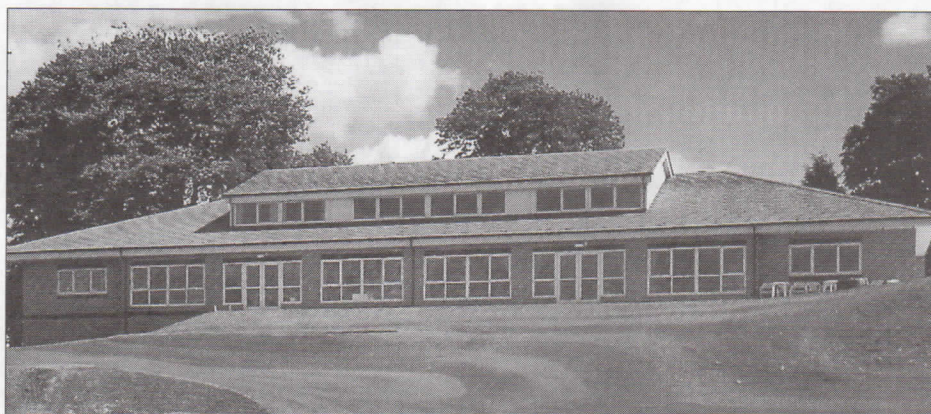
who continue the good work today.

Volunteers are always welcome to help on a regular or one off basis

Tel. Barbara Rodd
on 891584

Creigiau Golf Club

Golf was established in Creigiau in 1921. Set up by local businessmen the original course was a 9-hole course with a Nissen type modestly sized structure. The club held its first championships in 1926. A storm ended the life of the first clubhouse spreading it far and wide over the course together with the clubs jackets shoes and other golfing paraphernalia. After nature demolished the original building the club took up temporary accommodation in Rose Villa until sometime between 1923 and 1930 a "real" clubhouse was built. This structure stood the test of time until it was eventually replaced by



Creigiau Golf Club

the new clubhouse in 1993.

Run as a private members club the golf club has expanded from these modest beginnings and now has 1060 members; 750 playing members and 310 social members. A management committee is elected annually with a Captain,

Vice Captain and officers who form the basic running of the club. Among the notable achievements of the club Creigiau Golf Club has two current Welsh International players and in 1998 won the "Mail on Sunday" Finals competition held at the San Roque course in Spain. Creigiau became the first men's champions from Wales emerging undefeated from 11 rounds spread over 10 months out of an original entry of 1500 teams.



Lewis Arms, Pentyrch

ACKNOWLEDGEMENTS

This magazine is produced and published by Pentyrch Community Council to foster and maintain strong local identity. With the help of the Scouts in Creigiau, St Catwys Church in Pentyrch and individuals in Gwaelod y Garth and Capel Llanilltern the link is distributed throughout the area and every effort is made to ensure every household receives a copy. Editorial Board: Stuart Thomas Editor Gill Rees Angela Ashley Tom Proctor Delme Bowen Gillian Greene Penri Williams

The views expressed in the Community Link are not necessarily those of the Community Council

The Editorial Board wish to thank everybody for their contributions

PENTYRCH SENIOR YOUTH CLUB

The Community Council recognised a need to provide somewhere for the 13 plus youngsters to meet. After consultations with the youngsters, the Radyr Youth Provision and the police it was decided the youths wanted a form of drop in club where they could meet and socialise.

The first meeting was held on Thursday 8th January 1998 at the Rest Centre (Scout Hut). Money to buy equipment was made available by the Community Council and the Prince's Trust-Cymru.

A lack of volunteers to help start the club from any other sources meant that Councillors Gill Rees and Angela Ashley decided to start running the Club. Waterhall Youth Centre has been asked to assist but at the moment no regular help is at hand. There are two or three ladies prepared to standby on call if and when necessary but a lot more volunteers are required to enable the club to grow to our full potential.

The club is open from 7 - 9 p.m. on Thursdays during term time. A charge of 20p is made to cover minor expenses. The games available are pool, darts, table tennis, draughts, cards, board games and a portable stereo cassette player is used for music. Most Thursdays 15 - 20 youngsters come along, at present there are over 75 people registered.

We aim to provide a meeting place for the youngsters who would like more similar evenings. At the moment this is impossible as there is neither a venue available nor the necessary manpower to run one. In the future it may be possible to encourage some of the youngsters who have grown up and feel too old for youth club, to come and take responsibility for running the club themselves.

For further information contact
Gill Rees or Angela Ashley
on Tel 891417



Pentyrch Youth Club

GWAELOD-Y-GARTH YOUTH CLUB

Gwaelod-Y -Garth Youth Club has been open for many years. We meet on a Friday evening 6.45pm - 8.45pm (term time only)

The Youth Club staff, Bev, Lynne and Ian provide a varied programme of activities throughout the term including craft sessions, sports activities, drama, dance, trips out. Over the last year most of the young people have been working towards their Young Achievers Award. They chose as a Community project to clear the rubbish and generally tidy the Village Hall. They finally finished a few months ago. Everybody who participated worked extremely hard for many weeks on this project and what a difference it made to the Village Hall.

The young people who have completed this award will be invited to a presentation at County Hall for their achievements.

If you would like to more about this Youth Club ring Waterhall Youth Centre

Tel. No.564766.

RURAL WATCH

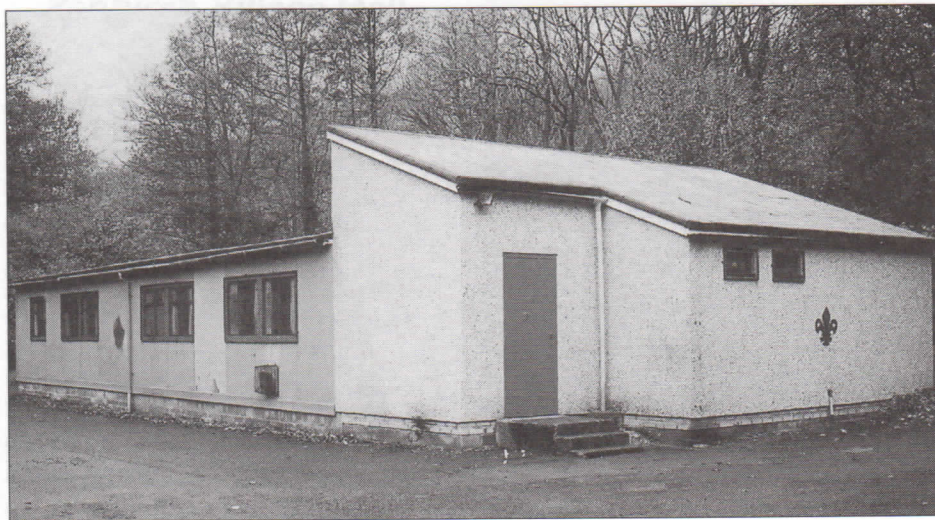
During October 1999 as a result of several crimes and concerns from residents in the country areas surrounding the local villages I decided to set up a Rural Watch scheme. This has taken off well and works by the use of automated telephone messages being despatched to all members advising on local crime problems, such as teams of distraction burglars, suspicious vehicles in the area etc. We hold the occasional meeting and have received good feedback from members. A steering group has been established and they have worked hard to raise funds to pay for the purchase of the Rural Watch signs that you may have seen.

If you would like to join Rural Watch please contact:

PC Bob Minton on 890753.



Gwaelod-y-Garth Youth Club



Scout Hall Creigiau

Seasons Greetings From Llantrisant Round Table

Llantrisant Round Table was formed some 23 years ago as part of a national organisation comprising "young men" up to the age of 45. As a local group we are actively involved with fundraising and providing support for local charities and community organisations. Over the years since Llantrisant Table started we have held a variety of highly successful fundraising events for charity including Real Ale Festivals and Boxing Dinners. Many thousands of pounds have been given to charity in both large and small grants.

We meet twice each month on Wednesday evenings at "La Trattoria" Restaurant in Talbot Green and have an active and enjoyable social calendar

The Llantrisant Round Table Father Christmas Float will be visiting Creigiau on Saturday the 12 December and Pentyrch on Saturday the 19 December from 6 p.m. onwards. So keep your eyes peeled for Santa!

We also have a Horse Racing Night on the 28 January 2000 that will be held at Pontyclun Rugby Club. All proceeds to go to local charities

If you are a local community group or charity which could use our support, or if you would like to find out more about Llantrisant Round Table why not contact us?

Ring Chris Cater 891877

Parish of Pentyrch

The Church in Wales parish of Pentyrch covers a geographical area that includes the villages of Pentyrch and Creigiau and that part of the village of Groesfaen that is to the west of Mill Lane in Groesfaen. It serves a population of 5000 through St Catwg's Church, Pentyrch, St. David's Church Groesfaen and the Church Hall, Creigiau. A parish magazine is published monthly. Copies can be obtained from either church at a cost of 25p or by annual subscription.

Contact with the church may be made through: The Vicar, Rev.G Holcombe Tel: 890318 or The Churchwardens St. Catwgs:-

Mr G. Longmore, Tel: 892047, Miss. B Nixon, Tel: 891948

The Churchwardens St. David's:-

Mrs. H. Mais, Tel: 891765

Dr T C Twining, Tel: 891058

Regular Services are held at the following times:

St. Catwg's

Holy Communion	8.00a.m. 4th Sun
Parish Eucharist	9.00a.m.
Evensong	6.00p.m. 2nd 4th 5th Sun
Sundays School	10.15a.m. 1st 2nd, 5th Sun

Holy Communion 10.00a.m. Weds

St. David's

Holy Communion	8.00 a.m. 1st Sun
Sung Eucharist	11.00 a.m.
Evensong	6.00 p.m. 1st 3rd Sun

Church Hall, Creigiau

Junior Church	9.45 a.m. 2nd 3rd Sun
Baptism, Holy Matrimony, Banns of Marriage Arrangements to be made with the Vicar	

Creigiau Scout Group

The 1st Creigiau Scout Group was formed in 1985 to answer the demand for Scouting in the rapidly growing village. After much effort the Group moved into its own headquarters in 1991 in the present Hall at the rear of Castle Close.

The Group now consists of a Beaver Colony for 6 year olds meeting at 4.30pm on Tuesday s. and a Beaver Colony for 7 year olds meeting at 4.30pm on Fridays.

The Cub Pack meets at 6.15pm on Tuesdays (8 - 10½ -year olds) and the Scout Troop at 7-15pm on Fridays (10½ - 15½ year olds).

The newly formed Venture Scout Unit for young people from the ages of 15 to 20 meets on Thursday. evenings at 7.00pm.

There are altogether some 100 members in the Group, supported by an enthusiastic Group Executive Committee.

Recent innovations for the Group have been the admission of girls into the Scout Troop and the formation of the Venture Scout Unit. Young people in the Unit will be able to participate in the Duke of Edinburgh Award Schemes and progress to the Queen's Scout Award, the highest achievement in the Association. In September the Group celebrated when William Maddocks became the first Scout to achieve the Chief Scout's Award.

There are also exciting plans to rebuild the Scout Hall to provide a better facility for the growing group, and a location for other village organisations which use the present hall such as Cylch Meithrin and Ti-afi.

As ever the Group is looking for more leaders and helpers for all the sections. If you would like to be part of this growing and successful organisation please contact the Group Scout Leader, **David Pendlebury, on 892077.**

The Vicar is always ready to give instruction in the Christian Faith and to help people with their Spiritual life.



Castell Mynach Farmhouse, Creigiau

PENTYRCH AND DISTRICT LOCAL HISTORY SOCIETY CYMDEITHAS HANES LLEOL PENTYRCH A'R CYLCH

The society was formed on 24th March 1993, at a meeting of thirty-six persons in Pentyrch Village Hall. By the following April we had seventy members and had held eight meetings in Horeb vestry with an average attendance of forty-five. In the autumn we held our first exhibition that took place over three days at Horeb vestry. A steady stream of visitors came to see the photographs, documents, books, maps, and interesting household artefacts from earlier times that were on display.

We began to vary our activities as much as possible. Two further exhibitions were held as well as walks around Pentyrch during which members with specialist knowledge pointed out historical features in the village. Visits were arranged to local places of historical interest. At the Creigiau carnival this year we put on display our large collection of photographs.

Perhaps our most far-reaching success has been the publication of our book in the Chalford 'Archive Photographs' series. Two thousand were printed and copies have gone to many parts of the world. The book is still available from local shops or direct from the society.

In November last year we began publishing our series of pamphlets entitled 'The Garth Domain' which are the voluntary work by members

writing about, people and places as they were. They come out on an occasional basis and so far five editions have been issued. Back numbers are available of most of the ones so far published.

We have been pleased to have the co-operation of Pentyrch Community Council particularly with regard to the Garth Mountain information plaque project.

While the community still has a distinctive character, we feel that our main function is to record for posterity all the historical information we can gather for the benefit of this and future generations. This is not to say that we confine our interest to purely local matters. We welcome speakers at our meetings on a wide range of subjects.

For the 1999-2000 season a full programme of excellent talks has been arranged. Whilst non-members are welcome at these meetings, we actively encourage everyone to join our very successful group. The membership subscription remains at five pounds. We meet on varying Wednesdays during most months between September and June.

Anyone seeking further information should contact:

**Denise James Tel 813316,
Liz Wallek Tel 891809, or
Don Llewellyn tel. 890535**

The Good Neighbour Scheme



The Good Neighbour Scheme is a voluntary organisation aiming to improve the quality of life for people in the community who may be experiencing some difficulty. The scheme offers a service of neighbourly help such as shopping, local transport, small practical tasks and a befriending service. It also acts as a local information service part of which is to produce and distribute a simple directory of local services and tradesmen. This directory will be distributed with this edition of Community Link for the first time to ensure that all members of the community have a copy.

The scheme was extended to cover the area in the autumn of 1996. At the time of writing, we are delighted to have 32 active and willing volunteers and to be supporting 37 people in the community. We host an Autumn Tea annually for senior citizens and have established a very successful weekly luncheon club in Pentyrch. We hope to establish a group for senior citizens of Creigiau in the new millennium. (Please see details in this edition of the Link)

We are always pleased to hear from anybody who may be able to volunteer for us, as there are times when we are unable to meet requests. Equally, we hope anybody who needs us will contact us so that we can be of assistance.

For further information please contact the co-ordinator.

Mrs Glenda Meakin on 842404.



War Memorial, Pentyrch

PENTYRCH NEIGHBOURHOOD WATCH

Pentyrch Neighbourhood Watch was formed in 1989 to provide an opportunity for people to get together to protect their own and their neighbours property and life style. Unlike the traditional Neighbourhood Watch, which consist of ten to twenty households in a close knit group banding together, the Pentyrch Watch is a village wide organisation covering some nine hundred houses.

Whilst this is an advantage in some respects, it can lead to many of its members treating the Watch as a service organisation. They forget that membership involves each individual caring for his or her own neighbours. The central committee is only there to provide information, liaison with the police and support. To improve our effectiveness we still need many more volunteers, from all parts of the village, to collect subscriptions, deliver newsletters and relay police warnings and messages. In an ideal situation these volunteers would only work with six to ten of their immediate neighbours. Your help would be much appreciated in this matter. Police warnings are received via the "Ringmaster" telephone message system. However it is not possible for the three or four people currently on the system to deliver such messages to nine hundred houses. Details of the system are available to anyone who is interested.

The Pentyrch Neighbourhood Watch holds regular public meetings at which all are welcome. See the current Neighbourhood Watch Newsletter for details.

For more information, please contact Mr. G. A. E. Longmore, Plasnewydd", Heol-y-Pentre, Pentyrch CF16 9QF Tel 892047 Email gordon.longmore@virgin.net

Pentyrch Tennis Club

Pentyrch Tennis Club was formed in the late 1970s. We have 3 hard courts and a clubhouse at Parc y Dwrllyn available all year round.

There is a thriving junior section with coaching provided by a qualified coach on Saturday mornings during April, May and June. The club subsidises this coaching so that, in addition to the annual subscription fee, there is only a nominal cost per session. Private coaching is also available. We are looking to develop the tennis coaching and are currently examining the grants available to us so that we can provide even better tuition from next season onwards.

For many years the club has competed in the Men's South Wales Tennis League, and we are hoping to enter a second team next year, as well as rejoining the Ladies League too.

Resurfacing our courts is the next major project we will be undertaking and this, together with developments in conjunction with the Pentyrch Sports Association at Parc y Dwrllyn will enable us to provide our members with excellent facilities.

The membership year runs from April to March and membership includes affiliation to the South Wales Lawn Tennis Association and entitlement to be included in the Club draw for Wimbledon Tickets.

For further details please contact: Helen Williams (890980) or Roy Colenutt (891255)

Creigiau Rainbows

Creigiau Rainbows is part of the Girl Guide movement and is for girls aged 5 - 7 years.

We meet every Tuesday in the Church Hall in Creigiau from 4.30pm - 5.30pm. The leaders of the Rainbows are Heather Williams and Nia Honeybun. The maximum number of girls is 15 and there is a healthy waiting list. A parent volunteer, organised on a weekly rota, also helps at the sessions along with our Youth Leader, Hannah Reed.

The type of activities arranged for each session reflects the interests of the girls. In addition to plenty of games and songs we provide a range of activities to cater for everyone. Making things is always popular but we have also had a Teddy Bears' Picnic and a couple of nature walks. We have had a talk from a local vet on how to look after our pets and a visit from the Hedgehog Rescue Centre, which was televised and shown on Wales Today. Future events include Christmas crafts and planting bulbs plus an entertainer to finish off the term. The girls move on to Brownies when they are seven.

If anyone wishes to put their child's name on the waiting list please contact one of the leaders for a form.

Heather Williams - 892156

Nia Honeybun - 890748



Creigiau Rainbows

Pentyrch Guides.

Guiding started in Pentyrch fifty years ago. Mrs Phyllis Pulvermacher started a Guide Company in the Rest Centre (Scout Hut) in 1949. The Camp Site at Craig Gwilym was acquired shortly after. These facilities gave Village girls the opportunity to learn new skills and services and to enjoy the outdoors. Over the years many hundreds of girls have enjoyed Rainbows, Brownies, Guides and Rangers. The Guiding Programme offers plenty of activities for both indoors and outdoors. Pentyrch Guides will be holding a Millennium/Reunion party some time during 2000. Mrs Pulvermacher and some of the original Guides hope to attend.

If you were ever a Pentyrch Guide or



Post Office, Creigiau

Guider, Myra Thomas (891419) would like to hear from you. If you are 10 and would like to become a Pentyrch Guide please contact **Evelyn Thomas on 01443 217706.**

Taff Ely (Llantrisant) Ramblers Association

The group, now with more than 120 members, was formed in 1993 and promotes rambling, protects rights of way, campaigns for access to the open country and defends the beauty of the countryside. Maintaining the local footpath network is a priority.

The Group's programme consists of weekly walks in South East Wales, which are usually approx 5/15 miles in length. We also offer walks for those who are less physically able or new to walking. We have a national reputation for our friendly welcome and relaxed attitude on our walks and new walkers are always welcome.

So come and enjoy the Countryside in the friendly company of fellow walkers

Walks Secretary: Daphne Little
1 Cynon Close Beddau R.C.T
or visit our web site
www.apyule.demon.co.uk/taffely.htm



Pentyrch Rugby Club and Sports Field

Pentyrch Rugby Club

The Club was formed way back in 1883 and has experienced many wonderful occasions over 116 years. Many of these were summarised in the book about the Club "A club for all reasons" published to mark our centenary. The present licensed Club house has been in existence for 23 years

The clubs plays two senior teams in the WRU (division 6) ending last season 5th in the league. A new youth side has started this season with training on a Tuesday evening. We have a very well organised Mini-rugby section that caters for in excess of 125 youngsters from the community.

We share links with the Isle of Bute

RFC Scotland Membership is available by contacting our Secretary **Mrs Elizabeth Lewis on 890483.**



Capel Llanilterne in 1994

National Womens Register

The National Women's Register was formed in 1960 following a letter from a lonely housewife to a national newspaper asking why a register of women could not be set up for those with "liberal interests and a desire to remain individuals". This register would enable them to contact each other upon moving to a new area. The response was overwhelming and groups sprang up all over the country offering women an opportunity to take part in informal discussions on a wide range of subjects and to promote friendship and a better understanding of both self and others.

The women who make up the register are women of all ages and from all walks of life. The register now contains more than 23 000 members in Great Britain and overseas.

The Creigiau NWR members meet informally once a month in one another's homes for discussions, both light-hearted and serious. The programme of events is decided upon as a group and includes theatre outings, social events, book discussion groups and speakers on a wide variety of different topics. Occasionally we meet up with other local NWR groups and over the years many long-lasting friendships have been made.

New members are always welcome. Please telephone the Local Group Organiser (Mrs. Linda Reed) on 891558 for further details.



2nd Creigiau Brownies

2ND CREIGIAU BROWNIES

The 2nd Creigiau Brownies reopened in November 1998 after Marion Chandler who had been the previous Brown Owl for 11 years and Sian Mickiewicz were unable to carry on. Bernadine O'Beirne as Tawny Owl, Chris Fawell as Little Owl and myself as Brown Owl started off with 8 old Brownies and 8 new ones, we quickly grew to the full complement of 24. The Brownies law is think of others before yourself and do a good turn every day. We meet once a week on Tuesdays between 5.30pm and 7.00pm. We make things, play lots of games and encourage the girls to take badges that they have a special interest in.

Brownies gives girls between the ages of 7 and 10 the opportunity to socialise out of school and have fun.

Bev. Raven, Brown Owl.

Tel 890093

Pentyrch Women's Institute

Pentyrch Women's Institute was founded fifty years ago and has been one of the most influential organisations in the Village. The Institute has pioneered many projects and championed many causes. A notable success was the setting up of the Pentyrch Medical Centre following active campaigning by members. Ymlaen-Pentyrch-Onward grew from a suggestion made at a W.I. meeting discussing their "Pathway to the Twenty-first Century" project.

Membership now numbers just over fifty. The Programme is very varied with speakers covering subjects as diverse as "Working with Gem Stones" to an update on the relief convoys to Belarus (to which the Members contribute supplies). Extra curricular activities include Art, Decoupage, Badminton, Skittles, visits to the Theatre and day and evening outings. There are teams who compete at Bowls, Darts and Quizzes. Pentyrch W.I. can offer opportunities for all women to enjoy friendship and to work together to improve the quality of life in our community. Members look forward to taking part in all the projects and events associated with the Millennium celebrations. Any new members wishing to join will be made most welcome at meetings held at 8 p.m. the first Wednesday of each month. Further information from Myra Thomas Tel. 891419.



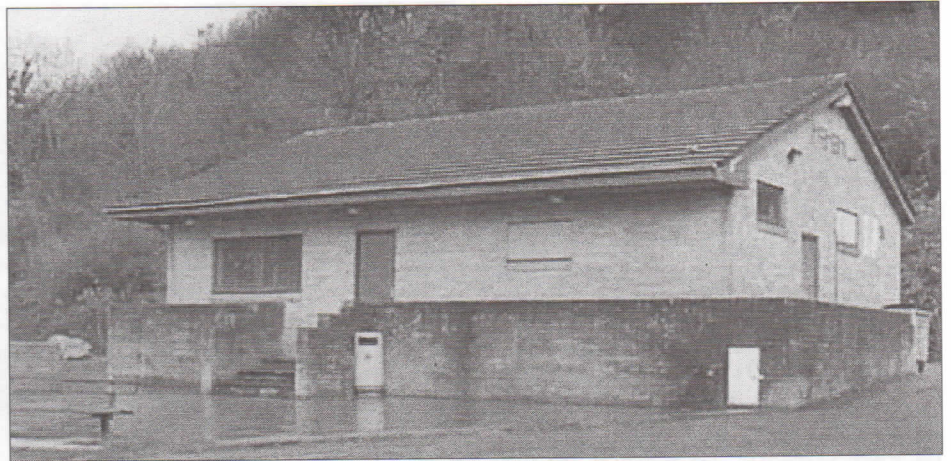
Kings Arms, Pentyrch

CRAMC

Creigiau Recreation Area Management Committee or 'Cramac' as it is more usually known is the voluntary organisation that manages the Recreation Field and Sports Pavilion in Creigiau jointly with Pentyrch Community Council.

Representatives of all the clubs that use the facilities sit on the committee together with local community councillors. At present Cramac consists of the Cricket Club, Football Club, Tennis Club, Petanque Club, Archery Club, Out of School Club and Dynevor Gardening Association.

The clubs pay a subscription every year and this entitles them to use the changing and meeting facilities of the sports pavilion. These subscriptions, together with half the profit of the annual carnival and rent for the occasional hiring out of the pavilion



The Pavilion at the Recreation Field, Creigiau

is the sum total of Cramac's income. Without generous support and advice from the Community Council, and the hard work and dedication of volunteers from the clubs it would not be possible to maintain the playing facilities to their present high standard.

Although the recreation area,

possibly because of its isolated site, is plagued by incidents of mindless vandalism the committee refuses to be downhearted. Future plans include extending the sports pavilion to improve changing facilities and establishing a footpath from the centre of the village to the Recreation Field.

Pentyrch Brownies

The 3rd Pentyrch Brownie Unit celebrated it's 21st Birthday this year with a party. We meet in the Pentyrch Village hall on Monday evenings between 6.00p.m. and 7.30p.m. The girls are aged between 7 - 10 years old and we run a range of activities, working towards badges, handicrafts, playing games and singing songs always with an emphasis on fun. We also go out for trips, this summer we went to Bristol Zoo. In January we are going to Techniquet for our Stargazer Badge and in December we are having a sleepover in the village hall. Some of the Brownies have written an account of our trip to the zoo.

At the end of the summer term, the 3rd Pentyrch Brownies decided to go on a trip to Bristol Zoo. It was a sunny day. We were waiting in the hall car park for the bus. The bus was late because it got lost in the village. The journey took about 3 quarter of an hour and we sung songs on the way.



3rd Pentyrch Brownies

When we got off the bus we were all very excited. We saw lots of animals and we went in the bug world, reptile house and aquarium. We then stopped for lunch and had a

picnic on the grass. After lunch Brown Owl offered us an ice cream and it was yummy. We arrived home very tired after a lovely day out.

Contact: Avril O'Leary, 890740



River Glade, Gwaelod-y-Garth



Horeb Chapel, Pentyrch

Gwaelod Old Age

The Gwaelod y Garth Old Age Pensioners Association was founded about 45 years ago and has been going from strength to strength ever since. It meets in the Gwaelod y Garth Village Hall at 2.30p.m. on alternate Wednesdays. At the moment there are 29 members in the group. A speaker is engaged once a month and on the alternate Wednesday either a quiz or competition is organised which normally leads to great hilarity. It is hoped that, in the future, funds will allow quality speakers to be engaged for nearly every meeting. Two or three outings are arranged each year and the aim is to make at least one of these free to members. A great welcome is assured to new members and we hope to greet several of these in the new Millennium.

Molly Patmore, Tel: 810485

Creigiau Neighbourhood Watch

In Aug 1989 in response to a high burglary rate a hard working small band of volunteers organised the launch meeting for Neighbourhood Watch which filled the Church Hall to capacity. Wardens and Co-ordinators for every street in the village came forward. Indeed the launch was so successful that the Police even asked the Creigiau Watch to help set up the Watch in Pentyrch. About 5 years ago the Watch also held a most successful night "A Question Time on Crime". Since that time however apathy has reigned and numbers have dwindled. However crime is still there. A revitalisation of the scheme is to take place and with the possibility of a crime wave this New Years Eve there can be a no more appropriate time.

Help is needed from every corner of the village.

For more information contact:

**Stuart Thomas Tel 891812
or Peter Sheperd Tel 892364**

Horeb Chapel

The Methodist revival in Wales began in 1785 as a result of the conversion of two men, Howel Harris and Daniel Rowland. On 1st April 1740 Howel Harris visited Pentyrch for the first time and as a result of several visits which he subsequently made, a society was formed. Pentyrch was, therefore, one of the earliest Methodist causes in Glamorganshire.

The fellowship met at Bryste Fach but in 1838 a new chapel was built on a spot called the Twyn Penygarn about a quarter of a mile away.

According to the 1851 census the building could hold 290. As a result of the 1859 revival the membership increased and in 1862 the present building was erected. The opening services were held on 13th and 14th April 1863. In 1895 a new schoolroom was erected at a total cost of £300.

Initially it had been a Welsh Cause but in 1959 it was decided to hold the evening service in English and in 1971 the church was transferred to Glamorgan East Presbytery. In 1884 the membership reached 100 but the congregation numbered around 350. In 1885, however, the Pentyrch works closed permanently and many moved from the area. The membership has never been large and although there was an increase as a result of the 1904-5 revival, the twentieth century has seen a gradual decline, around 70 in 1930, 50-60 in the mid century and today 14.

Unfortunately recent professional surveys have called for extensive repairs to the building which are obviously beyond the finances of the Church. Consequently, the outlook is bleak as without renewed interest being showed by the people of the village, the 260 years of Horeb's existence could be past history.

E. G. Bullock, Tel: 01443 203577



Stores and Post Office, Gwaelod-y-Garth



Church Hall Creigiau

Pentyrch Hill Race:

The Pentyrch Hill Race is a fell race registered with the Fell Running Association and graded B(M).

The year 2000 will see the 15th successive staging of this race.

The race is held on the last Tuesday in April (25th April 2000), starting at 7 p.m. at the Village Hall and has proved to be a very popular event in the Fell Running calendar of South Wales. Every year we host around 100 competitors making it, by far, the biggest Fell Race in South Wales. It is not unusual for athletes to undertake a round trip in excess of 150 miles to take part in what is considered a prestigious race. The course is approximately 7.5 miles long and climbs some 1700 feet. Last year the inaugural South Wales regional championships were incorporated into the race, and the year 2000 will see us once again hosting that championships.

There are normally about five or six athletes from the three communities who take part. We would not stage the race, however, if we could not call on up to 30 people, mainly from St Catwgs Church, to act as marshals around the course.

If anyone wants more information on the race they can always contact me at 45, Maes-y-Sarn, or Dave Pendlebury at 42, Maes-y-Sarn. If you don't feel up to competing, then come out and enjoy the spectacle.

John Gough

Pentyrch Bowls Club Year 2000

Just a few more months and yes you can start bowling again. We are open for new members for the coming season, so come give us a ring and see what we can offer you.

As some youngsters may be aware we have started to have coaching on Friday evenings. With a new coach and equipment we look forward to the coming season with great interest. Well done to Dean Jenkins of Creigiau in becoming our first Junior champion last season.

We run Ladies and Mens sides, along with mixed games on a regular basis, we have around 70 members who all bowl to their own commitment and enjoy themselves every year.

Should you be interested in joining us contact Norman Poulson 891259 or Alan Parsons 890390 who will only be to pleased to answer any questions you may have.



The Bowling Green, Pentyrch, and in the background the former Penuel Chapel

Creigiau WI

Creigiau WI was founded in 1968. Mostly meetings are held in the Creigiau Church Hall at 7.30 pm on the second Tuesday of the month. Meetings are informal with speakers, demonstrations and outings. We are involved with social environmental and consumer issues on a local, national and international level.

New members are always welcome. Why not come along and see what its all about.

For further information contact Jo Jones Tel. 890519.

Gwaelod y Garth Dancing

The Gwaelod y Garth Modern Sequence Dancing Society aims to teach both young and old to dance. Although the group is small at the moment new members are always welcome. We meet on Thursday nights at the Gwaelod y Garth Village hall and it is great to see members enjoying an evening of dancing as well as the social side of the group. We are a very happy class and would welcome new friends.

On Monday evenings there are also Ballroom dancing classes and the leaders Rob and Carol are very keen to have more people join in the group.

The children need not feel left out as Cheerleading classes are held on a Wednesday evening from 5.00pm to 7.00pm.

For further information contact Mrs P. Stone Tel.811494

YMLAEN PENTYRCH ONWARDS

Earlier this year Pentyrch WI contacted the Community Council to arrange a meeting of all the organisations active in Pentyrch so that Pentyrch's tribute to the past/future millennium could be considered. That First meeting took place in the spring and was very well attended by a full range of the organisations active within the village.

We aim to support the activities of the various organisations within the Village in their Millennium celebrations, arrange additional fund raising and celebratory activities and create a permanent artwork for the Village to enjoy.

We hope to create opportunities to develop the community spirit, which exists in Pentyrch, and bring together age and interest groups, which may not otherwise meet. Although formed to consider Millennium celebrations we intend to be active well into the New Millennium, our Artwork Project will not be completed until after the Millennium celebrations are over. Membership of Ymlaen Pentyrch Onwards is open to all non-political organisations active within Pentyrch.

The Festival Project Group has contacted all member organisations to obtain information for a Village Diary. The aim is to update and publish this regularly to advertise events within the Village

A Torchlight Procession is planned for New Years Day ending with a bonfire on the Garth. A Festival



Pentyrch Village Shops

week is planned during June as well as compilation of material for a time capsule by all our member organisations during the Year 2000.

The Artwork Project aims to produce an artwork to be located at a publicly accessible place in the village. We will be seeking Arts Council funding for the Project. We have embarked upon a fund raising campaign. This has included a Commemorative Coin designed by Pentyrch residents and minted at the Royal Mint to mark the Millennium, over 500 coins have been ordered so far.

Although we are a "young" organisation created only some 6 months ago we have already achieved much. Our Artwork project is an ambitious one which will require as much good luck as it will hard work, the omens are good, we have raised almost half of our £2,000 target and hope to raise the rest by June 2000.

Andrea Vaughan, Tel: 892190

Pentyrch Ladies

The group, originally called Young Wives, was formed over 20 years ago in response to the increase in young families living in Pentyrch as a result of the building of the two "new" estates.

The aim which continues today under the name of Pentyrch Ladies, was to provide somewhere for mums to get together in a sociable, informative and childfree (!) environment. Pentyrch Ladies also participate in village life and events and supports various charities through its own fund raising.

The annual programme includes regular events such as a summer meal, Christmas meal, skittles night and quiz night. In addition a variety of speakers have been from the Romania Appeal, Rhondda Heritage Park, Museum of Welsh Life, Cocktail making, various arts and crafts. In other words something for everyone.

The membership currently stands at 50 plus and rising spanning an age range from mid 20s to 60s. There is an annual fee of £6 and a £1 contribution per meeting towards refreshments and a raffle. The group meets on the 2nd and 4th Thursday of each month (excluding school holidays) at 8.00pm. in the village hall. For more details please contact Ann Cooper on 891828

Dates for early 2000

January 13th AGM

January 27th Quiz Night



Creigiau Inn



4th Pentyrch Brownies

4th Pentyrch Brownies

The 4th Pentyrch Brownies was started on the 5th April 1984 with just 12 Brownies.

During the formative years the Pack participated in many village and county events. The most memorable one being '75 years of Guiding' in 1985. The Brownies have raised money for various charities and also taken part in fund raising events for the village.

Over the years many Interest and Venture badges have been obtained by performing two pantomimes, coffee mornings, craft making, a trip to the Fire Station and a visit to the cells at Pontypridd Police Station!

We hope that each of the girls who have attended the Brownie evenings have enjoyed their time with us and have gained many new skills which have been helpful to them over the years. It has been rewarding to see some of our Brownies go on to further their Guiding careers.

Contact:

Sarah Eagle, Tel: 891481

Pentyrch Short Tennis

Short Tennis has been running in Pentyrch for approximately 10 years. It is designed for children under 10 to learn the skills of tennis before they develop the strength for lawn tennis. They use short rackets, soft foam balls and a short court. They may participate in tournaments which are held in South Wales mainly in the summer. The children usually progress to lawn tennis from the age of 7-8 years upwards and benefit from learning both short tennis and lawn tennis for a couple of years.

Coaching takes place in Pentyrch Village Hall on a Thursday evening during school term time between 5 and 7.30pm according to age and ability.

*To make enquiries or to enrol your child please contact:
Helen Williams on 890980.*

Creigiau Football Club

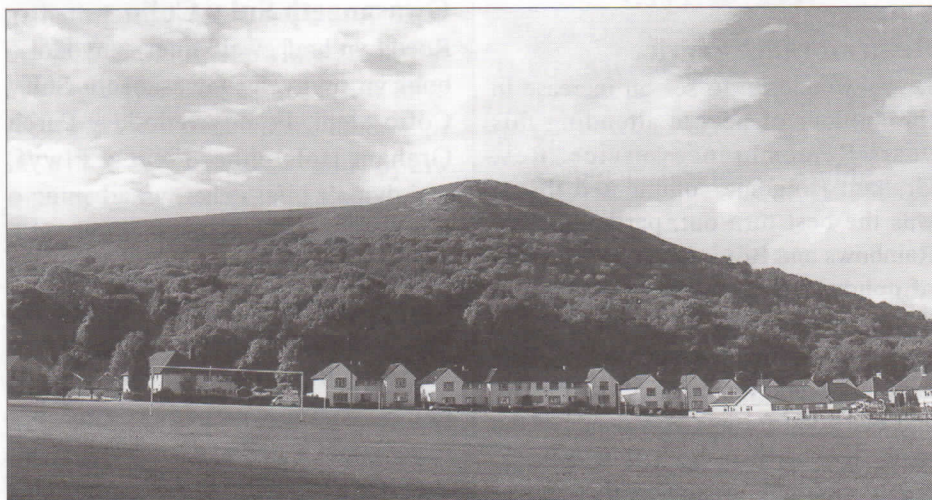
Creigiau Football club was started as a Sunday team in 1983. The team entered the Vale of Glamorgan league and, initially, defeats were frequent and often heavy. Persistence paid off and Creigiau became one of the strongest sides in the league. In 1990-91 season the team won the Vale of Glamorgan League Cup. The following year the club managed runner up spot in the same cup. League success proved elusive. With only two or three strong sides in the league the challenge diminished and the club decided to transfer to the larger Lazarou Brothers Sunday League in Cardiff. Successive promotions proved the strength of the squad and in 1998-99 season Creigiau F.C. won the cup final to lift another trophy.

Subsequently the side has merged with a team from Tongwynlais and continues to play as Creigiau Broadacre.

Creigiau FC Saturday team was started and entered the Cardiff and District League at the start of the 1992 -93 season in Division 5. Successive promotions saw the side rise to Division I for the 1996-97 season where mid-table finish was achieved. At present the club plays in Division II. The club has recently taken delivery of a smart new kit provided thanks to the generosity of Creigiau 23.

Home games are played at Creigiau Recreation field on Saturday afternoons during the season. Training takes place every Wednesday evening at the University of Glamorgan Treforest.

Creigiau Football Club has a flourishing veteran's section catering for players over the age of thirty-five. The club has two sides playing, over 40s and over 45s - in the Umbro National Veterans competition. From over 300 teams the club are very proud of having reached the final at Wembley Stadium in 1997 unfortunately losing 1-0. **C. Norey, Tel: 890545**



Garth Newydd Sports Field, Gwaelod-y-Garth

COMMUNITY COUNCIL HIGHLIGHTS PENAWDAU'R CYNGOR CYMUNED

Special Thank You

Once again the Council would like to thank Mr Emery Wisman who at his own expense and by his own efforts has installed the steel handrail at the end of the path that he built two years ago from the Terrace to Cardiff Road Creigiau. He and his wife Gayle even sat on the steps for nearly 3 hours while the concrete around the rail set.

Thank you Mr. Wisman

Diolch Arbennig

Unwaith eto dymuna'r Cyngor ddiolch i Mr Emery Wisman sydd wedi gosod rhwystrau ochr ffordd dur ar ddiwedd y llwybr a adeiladodd ddwy flynedd yn ol o'r Teras i Heol Caerdydd yn y Creigiau. Fe arhosodd ef a'i wraig, Gayle, am dair awr wrth y rhwystr newydd tra oedd y concrid yn caledu.

Diolch yn fawr, Mr Wisman.

Garth Mountain

There have been a number of complaints received regarding the irresponsibility of horse riders and cyclists on the Garth Mountain. The instances of walkers being intimidated by both horses riders and cyclists are increasing. The Garth is a Common for all to enjoy. It is not for the use of private businesses to "train their horses" nor is cycling allowed particularly on the Ancient Burial mounds that are protected by law with the possibility of a severe fine. Please respect other users of the Garth and just as important the Garth itself.

Mynydd y Garth

Derbyniwyd nifer o gwynion am ddifaterwch a diffyg cyfrifoldeb marchogion ceffylau a beicwyr ar Fynydd y Garth. Mae nifer o achosion o gerddedwyr yn cael eu dychryn gan feicwyr a cheffylau yn cynyddu. Mae'r Garth yn dir comin i bawb gael ei fwynhau. Nid yw ar gael ar gyfer busnesau preifat i hyfforddi ceffylau ac ni chaniateir beicio yn arbennig ar y Twmpathau Claddu Hynafol a amddiffynnir gan ddeddf gwlad gyda'r gosb o ddirwy drom. Os gwelwch yn dda, parchwch bawb sy'n defnyddio'r Garth a hefyd yn arbennig y Garth ei hun.

Millennium Mugs

Distribution of the millennium mugs to all Primary school and Nursery children has now taken place. Enquiries have been received from playgroups and individuals wishing to purchase mugs. There are a limited number available for purchase at a cost of £2.50. Anyone interested to contact the Clerk. The Community Council were touched when 8 year old Shoni Hole sent a Thank you card with the words "Thank you for my special mug". Council hopes it will be something that the children will treasure and will be a lasting memento of their childhood and the Millennium.

Recreation Field

Vandalism at Creigiau Recreation Field is becoming a regular event. In recent months the litter bin has been set alight 3 times, the Community Council notice torn off the side of the Pavilion, the Pavilion door has been kicked in and last week a stolen vehicle, from the quarry, was driven over the football field and cricket pitch causing considerable damage with "wheelies" gouging out large sections of the cricket square. The vehicle continued to knock over a newly installed bin and then through the gates of the childrens adventure playground. As there is no evidence of any other forms of transport it is assumed that these vandals are locals. Are they your children?

Remembrance Service

It was wonderful to see an increase in the number of people attending this years Remembrance service. Rev. Graham Holcome commented that it was the best turn out, particularly of Rainbows and Brownies in his 13 years of conducting the service. A special thanks goes to the Pentyrch Guiding organisation for their attendance. This is an important reminder of our history and our good fortune as a result of the many lives lost in both World Wars. Please continue to support this annual service.

Mygiau'r Mileniwm

Mae mygiau'r mileniwm i gyd wedi eu dosbarthu i holl blant yr Ysgolion Cynradd. Cafwyd nifer o ymholiadau oddi wrth ysgolion meithrin ac unigolion oedd am brynu mygiau. Mae nifer bychan ar gael o hyd am £2.50. Pawb sydd â diddordeb i gysylltu â Chlerc y Cyngor. Roedd y Cyngor Cymuned yn falch iawn o dderbyn cerdyn diolch oddi wrth Shoni Hole, 8 mlwydd oed, o Waelod y Garth gyda'r geiriau "Diolch am fy mwg arbennig". Mae'r Cyngor yn gobeithio y bydd y plant yn eu trysori fel atgof o'u plentynod yn yr ardal a'r Mileniwm newydd.

Maes Chwarae Creigiau

Mae fandaliaeth ar Faes Chwarae Creigiau wedi dod yn ddigwyddiad aml. Yn y misoedd diwethaf fe roddwyd bin sbwriel ar dân dair gwaith, fe rwygwyd arwydd y Cyngor Cymuned o ochr y Pafiliwn, mae drws y Pafiliwn wedi ei gicio i mewn ac ym mis Tachwedd fe yrrwyd cerbyd wedi ei ddwyn o'r chwarel dros y cae pêl droed a'r llain griced gan achosi difrod sylweddol gyda'r olwynion yn torri cwysi dwfn yn y sgwar criced. Fe aeth y cerbyd ymlaen i daro bin newydd drosodd ac yna drwy gatiâu maes chwarae antur y plant. Am nad oes unrhyw dystiolaeth o unrhyw ffordd arall o gludiant o'r maes fe dybir fod y fandaliaid yma yn bobl leol. Ai eich plant chi ydyn nhw?

Gwasanaeth Sul y Cofio

Roedd yn braf gweld nifer cynyddol o bobl yn mynychu Gwasanaeth Sul y Cofio eleni. Fe ddywedodd y Parch Graham Holcombe, Ficer y Plwyf, mai dyma'r nifer uchaf, yn arbennig o Rainbows a Brownies, yn ei gyfnod o 13 mlynedd yn arwain y gwasanaeth. Diolch arbennig i fudiadau Guides Pentyrch am eu presenoldeb. Mae'r achlysur hwn yn atgof pwysig o'n hanes ac yn werthfawrogiad o'r bywydau lu a gollwyd yn y dau Ryfel Byd. Os gwelwch yn dda parhewch i gefnogi'r gwasanaeth blynyddol hwn.

Nadolig / Christmas 1999

Over Christmas the Council office will be closed from the 23rd December and will reopen on 4th January.

Dros y Nadolig bydd swyddfa'r Cyngor Cymuned yn cau 23 Rhagfyr ac yn ail agor 4 Ionawr.

Teenage Village

Following public consultation and the lack of support expressed by the public for the teenage villages, the Community Council regret to announce that they have had to withdraw this project from their programme.

Pentrefi Ieuenctid

Yn dilyn trafodaethau eang gyda'r cyhoedd a'r diffyg cefnogaeth a ddangoswyd, mae'r Cyngor Cymuned wedi penderfynu dileu'r cynllun hwn o'i raglen waith.

PLEASE REMEMBER

The Accident and Emergency facility at East Glamorgan Hospital has now closed and transferred to the new Royal Glamorgan Hospital in Llantrisant. The new 'Tel. No. is 01443 443443

Adran yr Urdd Creigiau

As part of the Welsh Youth Movement, the Urdd has been in existence in Creigiau for approximately 20 years. It provides a variety of activities through the medium of Welsh for youngsters between the ages of 8 and 14. The members regularly have games, play pool, table tennis, football and netball. Each year there are visits to the ice rink, to the bowling arena and even to a climbing centre. They have recorded their own video, taken part in a TV programme and opera workshop, been to the opera and have come runners up in a national netball tournament. As the new millennium approaches, the group is going from strength to strength with over 50 regular members. New members are welcome on a Wednesday night at Creigiau School between 6.00p.m. and 8.30p.m. Please contact Joy Stenner on 892146 for further details.

Christmas Medical Arrangements

CREIGIAU

Fri. 24th Urgent cases only Church Village Surgery 9.00am to 11.00am
No Appointments

Sat. 25th to Tues 28th Closed

Weds. 29th & Thurs 30th Evening Surgery as usual

Fri. 31st Urgent cases only Church Village Surgery 9.00am to 11.00am
No Appointments

Sat. 1st to Mon 3rd Closed

Tues. 4th Hours back to normal

When the Surgery is closed

Emergency calls via Answerphone or Tel 01443 217217

Requests for repeat prescriptions for collection before Christmas to be made before 20th Dec

EMERGENCY DENTIST

Patients registered with a Dentist:-

Contact your normal Dentist who will have their own arrangements.

Unregistered Patients:-

A walk-in service is available

9.00 am - 12.00 noon at:-

Riverside Health Centre, Canton on December 25, 26, 27. January 1, 2, 3,
Dental Hospital Heath Park, Cardiff on December 28 and 31 and at Pontypridd Health Centre on December 26 and January 2.

EMERGENCY PHARMACY

Pharmacy arrangements will be displayed on the Community Council noticeboards.

THIS CHRISTMAS: GIVE A LIFE

Blood Donors are urgently needed. If you have not given blood in the last 16 weeks, telephone 01443 622088

Your gift could save a life.

Allotment Association

The Dynevor Gardening Association is the group that rent the Creigiau Allotments from the Community Council.

Membership is restricted to allotment holders. If anyone is interested in an allotment contact G. Smallman Tel 890126

PENTYRCH

Sat. 25th to Tues 28th Closed

Weds. 29th Normal Hours

Thurs 30th & Fri. 31st 9.00am to 12.00midday

Sat. 1st to Mon 3rd Closed

Tues. 4th Normal Hours

When the Surgery is closed

Emergency calls via Answerphone

TAFFS WELL MEDICAL CENTRE

Sat. 25th to Tues 28th Closed

Weds. 29th & Thurs 30th Normal Hours

Fri. 31st Emergency only 8.30 to Midday

Sat. 1st to Mon 3rd Closed

Tues. 4th Normal Hours

When the Surgery is closed

Emergency calls via Answerphone or Tel 01222 810260

RADYR SURGERY

Fri. 24th Normal Hours

Sat. 25th to Tues. 28th Closed

Weds. 29th Thurs. 30th Emergency Only Ring on Day Different Surgery hours throughout day

Fri. 31st. to Mon 3rd Closed

Tues. 4th Emergency Only Ring on Day

Weds. 5th Back to Normal Hours.

Christmas Refuse Collection

Cardiff County have confirmed the following arrangements for refuse collection over the Christmas period

Fri 24 Dec	Normal Collection
Sat 25 Dec to	
Tues 28 Dec	No Collection
Weds 29 Dec	Normal Weds Collection
Thur 30 Dec	Normal Thurs Collection
Fri 31 Dec	Normal Fri Collections
Sat 1 Jan &	
Sun 2 Jan	No Collection
Mon 3 Jan	Double Mon Collection
Tue 4 Jan	Double Tues Collection

Beirdd Bro / Radio Poets

Mae tri thîm o feirdd o'r ardal yn ymddangos yn gyson ar "Talwrn y Beirdd", Radio Cymru - Yr Awyr Iach, Y Dwrllyn ac Aberhafren. Maen nhw bron i gyd yn tarddu o ddosbarth nos Rhys Dafis, sy'n cwrdd drwy'r gaeaf yng Ngwaelod y Garth.

Safe Creigiau Diogel

Safe Creigiau Diogel was formed after a very successful public meeting on October 6th 1998. Our objective is to make Creigiau a safer place for all residents:

1. To obtain a crossing by the school and to reduce the use of cars coming to the school.
2. To slow the speed of traffic in the village.
- 3 To obtain a crossing near the Post office and park.

Safety outside the school is our top priority. In Nov. 1998 Cardiff County Council agreed a crossing patrol for Creigiau. An attendant took up post in February 1999. We have been in regular communication with Cardiff County Council and have had a site meeting with officers to discuss our concerns.

We have also taken steps to encourage more children to walk to school.

The BBC programme "Short Change" featured children from Creigiau to illustrate how dangerous it is for them to cycle to school. The programme compared Creigiau with a school in York where cycling is encouraged.

The programme Ffeil also followed a mother and two children on their journey to school highlighting the dangers and problems facing children in Creigiau.

In September the school began the Footsteps programme an initiative to help children to cross the road safely.

Creigiau 23 has also been working with us on a number of levels. They have supported our meetings, provided us with a grant of £100 and they are looking in to the possibility of sponsoring the provision of village signs to remind motorists that they are entering a village and to drive carefully.

The Safe Routes to School initiative would involve building several crossing points in the village. Our bid has been submitted to the Welsh Assembly and we are waiting to see if it gains approval early in 2000. If implemented this would benefit the whole village and would also encourage more walking and cycling thus reducing traffic. Meanwhile a second crossing patrol attendant has been approved for Ty Nant road. **Nia Honeybun, 890748.**



Efail y Castell Childrens Playarea Creigiau

CLWB CRICED CREIGIAU CRICKET CLUB

From a small group playing a handful of matches in 1987 on an artificial wicket and a very rough outfield at the Recreation area, the Cricket Club has come a long way.

Due to the tremendous efforts of the club members backed by the Community Council and despite many constant battles against vandalism, the club now has grass cricket wickets, practice nets and outfield the equal of many more established clubs.

In 1999 there were 33 senior members. Apart from the usual friendly fixtures we played in the Vale of Glamorgan Mid Week League and for the first time played weekend cricket in the Thomas Carroll Alliance Division 111 (finishing a creditable 3rd).

From its early days the club has always been keen on junior development and apart from playing

for the club several juniors have also represented the county. This year there were 64 junior members aged between 9 and 15 years old. The club entered teams in the Cardiff and Vale of Glamorgan League at Under 11, 13 and 15. The Under 11 team this year performed extremely well and won their league, beating Sully in the play off final at St. Fagans to win the trophy, the first the club has ever won! (see photo).

This year also saw the club play host to an Under 16 representative fixture when Cardiff played Swansea. Judging by the reaction of the officials and players it is likely that more such games will be played at Creigiau in the future.

Further highlights of each season now include the Six-A-Side weekend, the annual Tour and the Dinner Dance. *For more information contact: P. Morgan, Tel: 890288*



Creigiau Cricket Club Under 11's Team



Clwb y Dwrllyn

CLWB Y DWRLYN

Ffurfiwyd Clwb y Dwrllyn i hybu gweithgareddau hamdden drwy gyfrwng y Gymraeg i bob oedran ac i gefnogi, lle bo angen, gymdeithasau eraill megis dysgwyr Cymraeg ac addysg drwy gyfrwng y Gymraeg. Bu'n cwrdd am nifer o flynyddoedd yng Nghlwb Rygbi Pentyrch, ar gaeau y Dwrllyn, a dyna sut rhoddwyd yr enw i'r criw. Ffurfiwyd Clwb y Dwrllyn yn 1979. Y llywydd cyntaf oedd Arwel Ellis Owen.

Mae gennym ystod eang o aelodau o bob oedran ac rydym yn trefnu gweithgareddau o bob math drwy gyfrwng y Gymraeg ar gyfer oedolion a phlant. Gellir gwerthfawrogi rhai gweithgareddau mewn unrhyw iaith a lle bo angen gellir darparu

gwasanaeth cyfieithu ar y pryd i roi cyfle i'r di-Gymraeg ymuno yn yr hwyl!

Rydym yn cwrdd yn fisol fel arfer ym Mhentyrch neu'r Creigiau, ac mae ein gweithgareddau yn ymestyn o yrfaoedd whist i opera, gwyliau sgio i ymweliad â Stadiwm y Mileniwm, blasu gwin i deithiau cerdded i'r teulu, o ddiwrnod yn rasio ceffylau i barhau â thraddodiad y Fari Lwyd yn ein pentrefi.

Os ydych wedi symud i ardal Pentyrch, Creigiau neu Gwaelod y Garth a heb ddod i'n digwyddiadau misol - ble buoch chi? Rydym wedi eich colli ac rydych chi wedi colli mwy fyth. Ffoniwch: Gill Rees 890571.



2nd Pentyrch Guides

The 2nd Pentyrch Guides started approximately 40 years ago is held at Craig-Y-Parc School on Mondays in term time at 6.30 - 7.30 pm.

Young helpers are always welcome.

Gwaelod-y-Garth Improvement Group

For many years there existed a Gwaelod-y-Garth Conservation Group which comprised hard-working, interested, public-spirited villagers who were prepared to give up their valuable time to address these issues.

The Gwaelod - y - Garth Improvement Group is the successor to this now dormant Conservation Group and has been in existence for the past two years. The re-emergence of a conservation group arose as a response to suggestions and concerns raised by members of our community regarding the preservation and enhancement of our village and its immediate environment.

Our aim is to be proactive and to make a positive, immediate improvement i.e. to do and not to simply talk about it!

Our projects to date have included litter sweeps through the village; campaigning for signposts regarding unsuitable access for heavy/wide vehicles; clearing over-hanging branches which were causing children to walk on the main road on their journey to school; working alongside the County Council's Environment Group to maintain and clear public footpaths through our woodlands and campaigning for new signposts at the entrance to our village.

Our group is made up of like-minded volunteers and there are no scheduled meetings other than an A.G.M, which is usually held at our Village Hall.

Interested in offering help and support? Have an issue to raise?

Contact: **Clayton Evans,**
The Village Post Office,
Gwaelod-y Garth.
Tel: 810221

MERCHED Y WAWR CANGEN Y GARTH

Yn y Parc, ger y Bala, y sefydlwyd Mudiad Merched y Wawr ac ym mis Awst 1967 yn Eisteddfod Genedlaethol y Bala y profodd eisteddfodwyr selog groeso traddodiadol Pabell Merched y Wawr - paned o de a phice ar y mân neu fara brith.

Breuddwyd merched y Parc wrth sefydlu mudiad newydd i ferched Cymru oedd gweld Cymry yn byw bywydau cyflawn drwy gyfrwng y Gymraeg, ac mae Merched y Wawr yn cynnig sefyllfa lle unigryw yng Nghymru - sefyllfa na siaredir ond yr iaith Gymraeg, ac mae bod yn aelod o Ferched y Wawr wedi bod yn fodd i ddegau o ddysgwyr yr iaith groesi'r bont a'u galluogi i fwynhau bywyd cymdeithasol drwy gyfrwng y Gymraeg.

Ers ei sefydlu, bu Cangen y Garth yn fodd i ferched pentrefi Creigiau, Pentyrch a Gwaelod y Garth gwrdd bob mis i dreulio noson yng nghwmni ei gilydd drwy gyfrwng yr iaith Gymraeg. Ers blwyddyn neu ddwy bellach, mae'r gangen wedi croesawu aelodau o Lantrisant ac



The Mission, Pentyrch

Efail Isaf ac eleni mae dros 40 o aelodau yn cynrychioli pob oedran. Wrth lunio'r rhaglen ar gyfer y Flwyddyn 1999 - 2000, rydym wedi ceisio trefnu gweithgareddau sy' at ddant pawb, ac yn ystod y flwyddyn byddwn yn bwydo'r ymennydd drwy sgysiau difyr ar bynciau dwys a doniol, ac yn gofalu am y corff gyda dawnio llinell a noson o ymlacio mewn canolfan hamdden, ac yn dod i adnabod ein hardal yn well wrth fynd ar daith gerdded. Byddwn hefyd yn dathlu'r Nadolig drwy

ymweliad â Sain Ffagan i weld goleuo'r goeden Nadolig, yn dathlu Hen Galan gyntaf y Mileniwm newydd a dathlu Gwyl ein Nawdd Sant gyda noson o ddiwylliant Cymreig.

Os ydych chi'n siarad Cymraeg neu yn dysgu ac yn awyddus i gwrdd â Chymry Cymraeg eraill dewch i ymuno â Merched y Wawr. Cysylltwch â Gwyneth Jones: 891947.



Senior Cititen's enjoying a Tuesday Lunch

TUESDAY LUNCH

An initiative of the Good Neighbour Scheme, this weekly luncheon club has become a firm favourite with many of the senior citizens in our community. The first lunch took place in February 1998 and since then we have celebrated Christmas, our first birthday and two 90th birthdays! A two course hot meal is served at Pentyrch Village Hall for the modest

sum of £2.00 and this includes a cup of tea or coffee and a raffle ticket. Transport is available from Creigiau, Gwaelod y Garth as well as Pentyrch for those who need it.

New members are always welcome. For further information please contact Mrs Glenda Meakin on 842404.

Gwaelod WI

Gwaelod y Garth Women's Institute was founded on the 2nd May 1950 and each year a birthday dinner is held to commemorate this occasion. There were an original 41 members of which Janet Christopher and Megan Harries are the only survivors. The full Institute meets on the first Tuesday of every month, with the exception of August, in the Gwaelod y Garth Village Hall at 7.30p.m. Speakers on a variety of interesting subjects are engaged for each meeting. There are many other activities as the Women's Institute is no longer associated with Jam and Jerusalem but with such topical subjects as GM foods and prostate cancer and has considerable influence. Group meetings and the Carol services are always well attended. Outings by coach are arranged regularly and trips to the theatre and concerts are arranged. The main key to our and other institutes however is friendship and I would urge newcomers to the village to join the institute and make many new friends.

Contact: **Molly Patmore, 810485**

Cylch Meithrin a Cylch Ti a Fi Creigiau

The Cylch Meithrin and Cylch Mam a Phlentyn (now known as Cylch Ti a Fi) were established in Creigiau in 1985 with the aim of introducing the Welsh language to young children of the village. Both groups have been successful over the years, overcoming problems such as low numbers, lack of funds, cramped premises and, last year, a wanton act of vandalism at the pavilion which destroyed much of our equipment. However, Parents and teachers have worked hard at fundraising, ensuring that the Cylch remains an established part of the village life, and it is a

credit to all those who have been involved in the past that both the Cylch Meithrin and the Cylch Ti a Fi are now flourishing.

We have moved to new premises from the pavilion to the Scout hall and this has proved a great success. We are fortunate to have two qualified Meithrin leaders, Mrs. Sian Thomas and Mrs. Lisa Hill, who are very enthusiastic and have been complemented by the school nursery teacher and headmaster for their obvious hard work with the children. "Anti Lisa" and "Anti Sian" provide a wide range of stimulating pre-school activities for children aged 2½ years plus with the emphasis on play and enjoyment.

Our Cylch Ti a Fi is constantly growing in numbers "Anti Lisa" leads the sessions, which gives the children and parents a sense of continuity between the two groups. Lisa prepares suitable activities for the children each week, who have a good time singing, dancing and playing together whilst the parents can enjoy a coffee and a chat and make new friends. You do not need to speak Welsh to join in - Just come along and enjoy.

The Cylch Meithrin operate on Monday to Thursday 9.30am to 12.00pm. at the Scout Hall and the Cylch Ti a Fi meets on a Friday Morning 10.00 - 11.30 at the same location.

Contact: Siân Jones, Tel: 890764



Frog Pond, Creigiau

Community Action

After an announcement in 1988 that Steetley, owners of Taffs Well Quarry were planning to extend their operations into the ancient beech woods on the Lesser Garth, an SSSI, a group of people from Gwaelod y Garth formed a committee and stayed active for more than ten years fighting the detailed extension plan.

The Action Committee's persistence saved the ancient SSSI woodland on the Lesser Garth, led to the protection of the historic iron workings and saved the natural caves within the hill. The group fought with success to amend a plan, which will eventually free the Pentyrch Hill of heavy quarry traffic.

During the ten year campaign, a new company, Redland, attempted to install an asphalt plant on the Lesser Garth site, under historic planning rights, given in 1947 and 49. The original Action Committee was

joined by people from Pentyrch and other affected villages. The proposals were defeated.

A planning consent was signed in 1998 yet the final details of the woodland management are still to be finalised. In November 1999, Community Action sent what it hopes to be the last comments before the quarry plan is fully implemented.

Faced with potential destruction of the environment, a small group of people, supported vigorously by people in the villages, gave interminable amounts of time to campaign. The success of 'people power' led Lord Pryce Davies to write to Community Action saying, 'The future will be grateful to you'.



Garth Inn, Gwaelod-y-Garth

Creigiau Tennis Club

Tennis has been played in Creigiau since 1922, when it was played on two grass courts on the Cardiff Road with a small wooden hut as a pavilion. One of the earliest trophies is the ladies doubles silver cup dated 1933. However we were forced to move to new surroundings when our lease was up in 1981. Thanks in the main to Mrs Glenys Sadler, who sadly died in October after a long period of ill health, a loan was negotiated with the old Taff Ely Council, monies were raised by members, and we were able to build three all weather courts in the corner of the present sports field.

There tennis is played all year round. Membership of the club has fluctuated over the years and we are probably at an all time low at the present time. We have however a strong ladies team which entered and came second in their league run by Tennis Wales this Summer. Having won their group last year and gone up this year this was a very creditable performance. We also



Creigiau Tennis Club

have many keen junior players and ran a coaching course in the summer holidays, which was well attended with the participants able to apply for their LTA rating.

It is in the men's league that we have no members keen enough to run a team. In previous years they entered two teams and were consistently winning their matches.

We desperately need new members of all ages and sexes. It's a great facility we have here in our own

village - no transport costs and members can play 365 days a year, for a very reasonable cost. Memberships run from April 1st to March 31st but new members can join any time at a reduced fee for what's left of the 1999-2000 season. Lets make the year 2000 the year tennis takes off again in Creigiau.

Telephone numbers for further information: - Jenny Day 890501 Angela Armitt 890778 Trudi Evans 890036

Creigiau 23

Creigiau 23 goes back to the first large-scale development of the village at the end of the sixties. It was formed over 25 years ago by a group of 23 individuals who thought it would be a good idea to set up a local form of the Rotary Club in the village. Creigiau 23 never became a part of the Rotary but it developed into Creigiau 23 and became a formal "club" and charitable organisation, with a written constitution, supporting local groups in Creigiau.

The "23", which has now actually twice that number of members, has a dinner meeting on the first Tuesday of the month, in the Golf Club, which is usually followed by a guest speaker. We have speakers on a variety of subjects from the Barry railway which ran through Creigiau, the Cardiff Bay development, the environment, the Samaritans, trekking through Nepal and much more.



Craig-y-Parc School

Apart from this aspect we support local organisations and charities such as the youth cricket club, the football team, the netball team, cubs and scouts and pre-school groups both Welsh and English. Helping organise the carnival is a big summer project and running the bar and burger stall falls on "23" members. Hard work but good fun. Our annual dinner dance at the end of January is also an enjoyable event

not to be missed and will be our first major event of the new Millennium. We always give new members a warm welcome or if you would like to come along as our guest for an evening dinner please contact one of our members or ring me, Jim Prosser, (Chairman) on 890576 or next years Chairman Iwan Griffiths on 891018.

Pentyrch Cricket Club 100 Not Out

In the early 1880s schoolmaster Morgan Thomas founded cricket in Pentyrch on the hilly ground at Y Forlan.

Later the club was forced to establish a pitch on boggy ground at Clawdd Shon, where Tom Miles a prodigious hitter, set a local record - a 170 yard hit to Penygarn field.

In those early days opponents found the long and winding road up to Pentyrch exhausting and usually lost the game, but always 'celebrated' at the Rock and Castle. A Llandaf team, men of the cloth and all, over indulged and to local oral tradition had to be ferried home by wheelbarrow.

Down the generations many have taken the lead in maintaining standards for hospitality, good sport and fellowship. Colonel Henry Lewis was an early benefactor; E.T. Lewis - local grocer devoted himself to village cricket; Conway Lewis was long-time secretary and Trefor Llewellyn - 'Mr. Cricket'.

Crad Evans was in charge when the club 'moved' again to its present home at Parc y Dwrllyn.

The club enjoys today a pavilion of character, fenced boundary, score-box and a village setting worthy of attracting a first class fixture in 1993, Glamorgan v Northamptonshire.

The club, invites all ages from ages 7 onwards, all abilities for coaching; friendly games or league club standard or just a most welcome social member. Telephone John Moore 890680 for details



Police Station and Community Council Offices

Creigiau Netball Club

Creigiau Netball Club has come along way from the group of young mums who formed the Club 15 years ago for fitness and friendship. Wellington boots were required to gain access to the netball court (on the tennis courts down the rec). No one had played netball since their schooldays and the rules all seemed new! We soon found out when we started playing matches that there was a lot to learn but we still enjoyed ourselves.

Today membership numbers exceed 50 with ages ranging from 11 to 50. Two members remain from the original team of mums, Caroline Morgan and Gill Barber, who still play for the Club. The Junior section formed 7 years ago has improved numbers vastly, many girls move on to play in the adult teams. Daughters are now playing with their mums in the same team.

Last season was one of celebration for the Clubs under 14 team who

won the Welsh Club Championships. Furthermore two of the members of this team are members of the County Squad - Ffion Greenow and Laura Davies.

For the 1999/2000 season all 54 current members play for one of our teams in the various leagues we are involved with. There are 3 junior teams (under 12, 14 & 16) who play in the Cardiff & District junior league, and 3 senior teams (2 play in Cardiff the other plays in Bridgend).

As a result of a lot of fundraising (quiz nights, Webb ivory, bungee jumps and grants) the club enters the new millennium with new kit as demonstrated in the photos.

Training takes place every Monday night (term time) at Y Pant School 6 - 8 p.m. New Members are always welcome. Our underlying aim is still fitness and friendship; and along the way a lot of fun!

For more information contact:

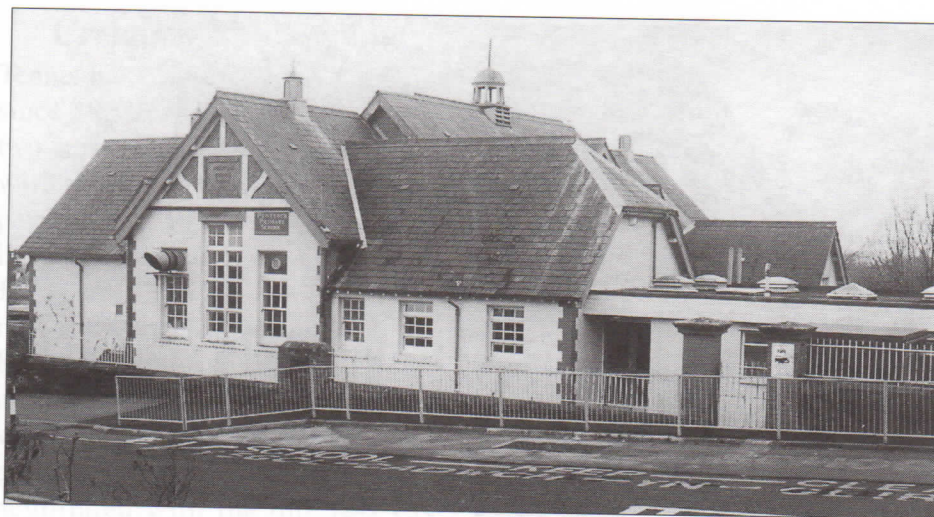
Caroline Morgan, Tel: 890828

Bethlehem, Gwaelod y Garth

Sefydlwyd addoldy'r Annibynwyr yn 1832 yn anterth cloddio am lo a gweithio haearn yn yr ardal. Profodd Bethlehem adfywiad rhyfeddol yn ystod chwarter olaf y ganrif hon ac mae'n denu mynychwyr o ardal eang. Yn aml gwelir dros gant mewn oedfa fore Sul - cyfran uchel ohonyn nhw'n deuluoedd ifanc. Mae tua deugain o blant yn yr Ysgol Sul ac mae'r aelodaeth tua 160. Cytunodd ein gweinidog, Y Parchedig T. J Davies, i'n harwain i'r flwyddyn 2000 cyn ymddeol ym mis Ionawr. Ifan Roberts



Bethlehem Chapel Gwaelod-y-Garth



Pentyrch Primary School

PENTYRCH PRIMARY

The original school, Pentyrch Board School, was established in 1880 in Penuel Road. The new Pentyrch Council School, now known as Pentyrch Primary, was opened in 1907. There are currently 204 pupils on the roll arranged in seven classes. They are accommodated in the main building and four demountable classroom units. There is an ample playground and a spacious playing field adjacent to the school. We welcome pupils between ages of four and eleven years.

The children enjoy a range of extra curricular activities. Our netball team competes in the local schools' league. In the Autumn and Spring Term our football team regularly play friendlies. In the Summer Term staff arrange a number of sporting activities, including baseball, kwik cricket and athletics. The county's football, cricket and rugby development officers regularly visit the school. Music lessons are offered to pupils for a variety of instruments and our school choir often performs in school and the village.

We enjoy the support of a committed Governing Body and a very active P.T.A. The Friends of Pentyrch School provide many valuable additional resources for our children and play an important part in the social life of the village. Forthcoming events include a Wine Tasting Evening, our Christmas Fayre and a Valentines Day Quiz. We are currently planning a Millennium Garden Project.

CREIGIAU GUIDES

The Guide Movement is as old as the village, involving village girls age 10 - 14 years. Exciting times are happening in the unit of 1st Creigiau Guides. Following the retirement of the guiders in August 1999 we now have a new modern leadership to take us into the Millennium. They are young, keen, ambitious and full of ideas and drive, and have both been involved in the Guide Movement themselves since a young age. The Guides have responded to this change very positively and look forward to their meetings! They are all excitedly working towards badges and are busily working together on a Christmas concert in which each patrol has a part!

The new leaders are working to get their Camping Certificates in order to take their Unit camping to St. Clears in the Summer.

Anyone wishing to join in the fun of Creigiau Guides should contact Lesley Grubb on 891999.

CREIGIAU MOTHER & TODDLER GROUP

The Creigiau Mother & Toddler Group was, set up on 3rd September 1984. The Group meets weekly at Creigiau Church Hall and aims to bring together mums, dads and childminders of babies and young children from within and around the village. It is an ideal opportunity to integrate into the community and many firm friendships have been made and these continue as many of the children later join the village playgroup and school.

The Group currently meets every term-time Monday from 1.30 to 3pm. Some 34 adults and 45 children have attended the Group since September 1999. The children have plenty of opportunity to play. There are, amongst other things, books, toys, bikes, a slide and even a ball tent to keep them occupied. Some facilities are shared with Creigiau Playgroup, who use the same hall. Refreshments are available for the adults and children.

At the last meeting of the autumn term, Santa visits with his sack of presents, and party snacks are provided instead of the usual refreshments. At Easter, party snacks are on offer again, and all the children go home with a chocolate gift.

Please feel free to contact Helen Bailey (890942) and Michele Evans (891014) for further information.



Pantygored Farmhouse Creigiau

Cylch Meithrin Gwaelod-y-Garth

Cylch Meithrin, which uses the Vestry of Capel Bethlehem, is run by leader Ann Williams, of Taffs Well, and assistant leader Judith Gough, also of Taffs Well. Together they founded the Cylch Meithrin 10 years ago. It operates Monday to Friday and caters for 16 children, age two-and-a-half to

four, some of whom stay all day. There is a special needs supervisor, Jean Lewis, who attends three mornings a week, and a lunchtime supervisor, Andrea Connolly. Cylch Meithrin Gwaelod-y-Garth is part of Mudiad Ysgolion Meithrin, the Welsh-language nursery schools movement. In its first official Government inspection held recently the Clych Meithrin received the highest

possible praise in every aspect of its activities. In the six areas of learning and the four other areas assessed the inspectors assessment was "Likely to promote desirable outcomes" and in all cases under the heading of shortcomings the inspector recorded "There are no discernible shortcomings".

For further information contact Mrs. A. Williams Tel 813980



Gwaelod-y-Garth Primary School

Gwaelod y Garth Primary School

The first school site in Gwaelod y Garth shared site with a chapel on what is now known as school lane and was originally set up in about 1829. The premises ceased to be used as a chapel when the new Bethlehem Chapel opened in 1872. The existing school opened in 1881 as the Pentyrch Works Board School and the larger part of the current school was added in 1898. The Welsh Medium unit at the school opened in 1967. With the opening of Creigiau School in 1977 the catchment for Welsh medium education was split, numbers fell but these have now risen again.

At present there are 193 pupils in the school 134 taught in Welsh and 59 in English with 7 teachers and a head teacher.

Various clubs run at the school include Adran Art Club, Soccer, Rugby, Netball, Cricket, Swimming and Cross Country running. Music lessons are also run for a wide range of instruments. A hard working Parent Teacher Association organises many social events throughout the year using the funds raised to obtain extra resources for the school.

Creigiau Playgroup

Creigiau Playgroup was set up over 19 years ago, within Creigiau Church Hall. It began opening 3 days a week and gradually opened five days. It continues to be a successful playgroup, now under the leadership of Ruth Coles and her two assistants Gill Barber and Carol Schuler.

We are members of the Pre-school Playgroups Association and registered with Social Services. In 1998 we achieved the status of a Quality Assured Playgroup. This ensures that our children receive a balanced education within playgroup, by rotation of toys and activities.

We operate by a committee of parent volunteers and place great emphasis on parental involvement.

This year we will be having a joint Christmas party for our children and those of the Clych Meithrin Creigiau, by kind donation from Creigiau 23.

For further information about our playgroup please contact

Ruth Coles Tel: 01222 892762
Monday-Thursday
9.15am - 11.45am.

Cantorion Creigiau

Reg. Charity No. 505574

Christmas 1969 a group of Creigiau villagers went around the village, carol singing, to raise money for a local foster home. Following the success of this Cantorion Creigiau was formed. The Choir has gone from strength to strength becoming one of the prestigious choirs in Wales.

Currently there are 80 members. Rehearsals are held in Creigiau Primary School on Sunday at 7.30p.m. during term time. New members are always welcome; we would like to have more Tenors and Basses. During the season (September to July) concerts may be once a fortnight depending on demand.

The Choir is itself a Registered Charity. We have been busy performing around the U. K. raising money for Charities this last year raising £9,000. Since forming approx. £160,000 has been raised by our concerts for various charities.

The Choir has been invited to participate in competitions and Festivals in France, Ireland and Italy. In September 1998 a return visit to Laigueglia, Italy was a highly successful Concert Tour performing to audiences of 700 - 1,300

The Choir has won at the National Eisteddfod, Miners' Eisteddfod and a Celtic Festival. Regional finalists- Sainsbury Choir of the year, finalists in Welsh Choir of the year - broadcasted S4C. The Choir has appeared in several television programmes.

Tel: M. Coles 891596

Pentyrch Sports Association

The Pentyrch Sports Association (PSA) was formed to ensure the area has a permanent amenity for sport and leisure for the whole community and is responsible for the management of Parc-y Dwrllyn under a 999-year lease granted when Taff-Ely Borough Council was responsible for our area.

The PSA operates to a constitution formed by the founder member groups from Soccer, Cricket, Tennis, Bowls and Rugby. Each section is a separate entity and operates independently of each other but collectively forming the PSA. The PSA receives no funding from any other group or body and is totally self-financing.

The Chairmanship of PSA is shared, on an annual basis, between the five groups. At present Steve Prentice from the Soccer club is in the chair, with Roy Colenutt (Tennis) as Treasurer and John Harrison (Rugby) acting as Secretary.

Pentyrch Chess Club

The Chess club was formed in 1981. We meet at the Kings Arms Pentyrch every Monday evening at 7.30pm. All levels of play are catered for within the group. We have two sides competing in Division 2 and Division 4 of the East Glamorgan League.

New members are always extremely welcome. For further information please contact Viv Martin on 891402 or Jeff Tyrrell on 891381.



Pwntyrch Art Group

Pentyrch Nursery Playgroup

The Nursery Playgroup has been running in Pentyrch for over 23 years since the village hall was first built. Registered with Social Services and fully insured the group caters for young children from 2½ years to school age providing them with a wide range of stimulating activities. The leaders with the group are qualified and long experienced. We maintain good links with Pentyrch Primary School to create continuity between nursery care and primary education.

We are open at the Pentyrch Village Hall Monday to Friday 9.00am to 12.00pm (term time only)

Anyone interested in a placement is welcome to visit or you can ring Carol Saint on 891821.

Gwaelod y Garth Village Hall

The Hall was built in 1971 on the site of the old Rest Centre that had been erected in 1940 for wartime purposes. Tel. Mrs P Stone 811494 for details.

Pentyrch Art Group

Pentyrch Art Group began some 13 years ago, when several members of Pentyrch W.I. discovered they had an interest in painting on attending a 'Day School' held by Glam Federation W.I.

We started to meet and sketch at the village church, and when the evenings began to draw in decided to meet on a regular weekly basis. Initially we met at a member's house and painted at her dining room table. Teachers were found -(Dave & Sylvia Williams)- and word soon got around that there was an art class in Pentyrch. So, we outgrew the dining room table and decided to meet at the village school.

We continued to meet at the school until 1996, when we moved to Horeb Chapel - still meeting on Monday evenings.

Membership is currently 22, the ideal size for the room that we use. Some members have been with the group since the beginning, others join and lose interest, but membership is usually about 20 - we now have 5 men in the group.

We have had three annual Spring exhibitions in the Village Hall, and we also display paintings at the School Fete and the Village Hall Autumn/Christmas Fair. These have all been most successful, with many favourable comments. Remember we are all amateur artists who paint for pleasure!

For further information about the group please contact Anne Peebles or Glenys Mullins. Tel: 890279



Village Hall, Gwaelod-y-Garth

Pentyrch Over 60's Club

The Darby and Joan Club started in Pentyrch in March 1957 meeting at the Rest Centre with just 3 original members, £6 in the funds and subscriptions at 3 pennies. After a period of time the club moved to Horeb eventually moving onto the Village Hall. Although numbers in the club have been as high as about 90 in the past the group still has an encouraging membership of about 50 although new young blood (over 60yrs) would be very welcome. That is not to say that members are not young at heart. In recent months we have enjoyed an afternoon of Line Dancing, had the pleasure of the 'Callenig' a mixture of Folksongs, stories of local history sea shanties and lessons on playing spoons. Our Harvest Festival was a great success. We have also received two excellent musical performances from the children from Pentyrch Primary. We look forward to our Christmas dinner on the 25th November with entertainment provided by the Morris Dancers. Other events in our calendar include a St. David's Day concert, Summer Buffet Tea Pantomime. If anyone is interested in joining our happy band they can contact Mrs. Elms, Tel 890298.



Scout Hall Pentyrch, formerly known as Rest Centre

1st Pentyrch Scout Group

Older residents will no doubt recall that Scouting was re-established in the village in the early 1970's after many years absence. Headquarters was established in the Rest Centre Mountain Road where we are today.

The movement has seen many changes over the years but the aim of developing young people, assisting them to realise their potential and to become responsible members of society remains. The group's popularity has fluctuated over the years and is heavily dependent on the availability of leaders. We have been lucky to recruit some committed leaders in the last few years although we are always on the lookout for adults

who wish to take up the challenge. Parents of children wishing to join should contact the leaders of the appropriate sections and any adults who wish to train as leaders are very welcome.

Contacts:

Scouter in Charge Ken Mills 890883
Executive Committee Chairman Harry Rees 891038

Beavers ages 6 - 8 years meet on Tuesday 6.30pm

Tel. Andrea Vaughan on 892190

Cubs ages 8 - 10 1/2 years meet on Monday 6.30pm

Tel Damien Hargreaves 01443 209386

Scouts ages 10 1/2 - 15 meet on Wednesday 7.00pm

Tel Steve Axe on 890518

Pentyrch RFC Mini and Junior Section

Pentyrch RFC has through its chairman John Harrison previously acknowledged (in Community Link) the importance of a successful Mini and Junior section to the club and indeed to the community as a whole. The success of any organisation is dependent on the "whole of it's parts" and we are particularly lucky at this time to have so many committed coaches, committee members and helpers who all make a positive contribution.

The under 8, under 9, under 10, under 11, under 12 and under 13 age groups train on a Friday night (6.00pm). The under 14 and under 15 age groups train on a Wednesday night (6.00pm)

To everyone's delight WRU national coach and hero Graham Henry visited us on the 16th November before attending a function in the Rugby

Club. We suspect he was starting to scout for talent for the World Cup after next.

Parents. Why not bring your children to see us on a training night? Alternatively telephone Harry Rees

(Chairman) on 891038 or Ken Mills (Secretary) on 890883 who will put you in touch with the coach of the relevant age group. You can visit our website at :

www.uwcm.ac.uk/uwcm/hg/mills/rugby



Garage and Stores, Creigiau

Pentyrch Rangers AFC

Pentyrch Rangers AFC was formed in 1990 with the aim of encouraging junior football in the Pentyrch, Creigiau, Gwaelod-y-Garth and surrounding areas. The club has expanded each year and now has nearly 150 members from the age of 6 up to 18 years. We currently have a youth team in the SWFA Youth League, three teams playing in the Cardiff and district league and three teams compete in the mini-soccer (7-a-side) competition. The club is based at Parc-y-Dwrllyn, Pentyrch and is a member of the Pentyrch Sports Association.

The club has had a number of notable successes during this time, winning the Cardiff and District Cup on 5 occasions at various age groups. Many of the boys have



Pentyrch Rangers AFC

been selected for representative honours for Cardiff Schools, Cardiff League, various centres of excellence and one Welsh cap.

Training is held most Sundays at 10.30 am for the 10s and under and new members are always

welcome. Other age groups train mid-week and play matches on Saturday. If anyone would like further information please contact Steve Prentice (891252), Tony Passmore (892450).

1st Creigiau Brownies

The 1st Creigiau Brownies was registered in March 1974 and meets every Monday evening from 5.30-7.00 p.m. in Creigiau Church Hall. It provides membership of the Guide Association for 24 Brownies aged between 7 - 10 years.

Brownie Guides have been a part of the Guide Association since 1914, and used to be known as Rosebuds. The girls were re-named Brownies in 1916 and then in 1968 they became Brownie Guides to emphasise their membership of the great Guide "family".

Brownies are encouraged to think of others before themselves and do a good turn every day. Our Brownies collect foil, used stamps and foreign coins on a regular basis for the Guide Dogs for the Blind Association. Over the years they have raised considerable amounts of money for charity by having sponsored skips, bring & buy sales, silver & brass cleaning evenings and coffee & craft evenings, etc.

Application forms for the Brownie waiting list are available from -Mrs. Linda Reed (Brown Owl). Tel. 891558



Brownies delivering old blankets for dogs and cats in the Cardiff Animal Shelter

Creigiau Carnival

The Carnival developed from an annual Sports day first held in 1969 and organised by Creigiau 23. The event was held for several years on one of the fields of Castell Mynach farm near the entrance of Parc-y-Coed and then on the green at Parc y Fro.

As local groups became involved in the organisation the event grew and fancy dress competitions, stalls and refreshments were included. However it wasn't until the early eighties, when the Recreation Field had been procured and the Pavilion built, that the Carnival, as we know it

with floats and procession, was formed. Since then, the Carnival has been organised by CRAMC and Creigiau 23.

The Carnival has provided lots of enjoyment over the years to the people of Creigiau, and in the process raised many thousands of pounds. This money has been available to help groups and societies in Creigiau, and for the up-keep of the Pavilion and the Recreation Field.

Volunteers organise the Carnival; if you wish to be involved in a very worthwhile village event please contact Jen MacDonald Tel 892830



School Lane Gwaloed -y-Garth

Creigiau Petanque Club

Creigiau Petanque Club (Petanque is also known as "boules") is based at the Creigiau Recreation ground and is the largest club of its type in the Cardiff area, fielding six sides in the South Wales League. The club meets between March and October for its season, on Sunday lunchtimes and Monday evening club nights from 7.30pm. League nights are on a Wednesday night between Mid April and September.

Young and old, men and women, children and adults can play the game alike. Unlike other sports however, petanque can be played on an even

footing by all. Strength counts for little, skill for a lot!

We would like to develop a junior section within the club, and would love to see families coming along to try their hands. Membership is cheap, £10 last year for adults. We currently have 3 full Welsh Internationals playing for us at the higher levels but there is also room for the casual player who maybe would not want to make a regular commitment to play, but would nonetheless still like to participate in a gentle sport. The best way to know about our game is to join in and play it.

Keith Lord Telephone 892184

Creigiau Primary School

The school opened on 25th April 1977. The number of pupils registered on the first day was 182 (i.e. 125 in the English Section and 57 in the Welsh Section).

Currently there are 398 pupils on roll (including the Nursery and Meithrin) with sixteen members of staff. Pupils may receive their education through the medium of Welsh or English, depending on the wishes of parents.

The school sees itself as an integral part of the community and has developed a close relationship with parents and groups within the locality. Many of the societies use the school on a regular basis. The very active Friends of the School organise events for the school and the community, e.g. Bonfire Night, Millennium Party.

Clubs and organisations within the school include soccer, netball,

cricket, drama, Urdd activities, choir and orchestra. Children are also made aware from an early age of the importance of thinking of those less fortunate than themselves and they work hard to raise money for charity, e.g. 50% of the proceeds of our Christmas concert this year will be donated to Ty Hafan.



Creigiau Primary School

Ti a Fi Pentyrch

Mae Ti a Fi yn cwrdd bob prynhawn Mercher yn Neuadd y Pentref am 1.30. Mae criw selog yn cwrdd yn wythnosol, ac mae'r plant ifanc yn cael hwyl yn cymdeithasu trwy chwarae, cael byrfwyd a chanu caneuon Cymraeg. Mae'n addas i fabanod newydd hyd at blant o oedran cyn-ysgol. Mae gennym y Neuadd gyfan ac mae'n awyrgylch bleserus iawn i gwrdd ynddo. Osgwyddoch chi am rywun sydd â diddordeb dywedwch wrthynt amdano neu os oes gennych ddiddordeb, ymunwch â ni.

Yn anffodus, oherwydd diffyg nifer o blant 2^{1/2} - 3^{1/2} oed, mae'r Cylch Meithrin wedi methu agor mis Medi yma, ond mae gennym chwech o rai bach fydd yn mynychu o fis Medi nesa ymlaen. Maent yn eiddgar ac yn edrych ymlaen!

Rydym yn dal i godi arian ar gyfer y Cylch Meithrin a dyma ni ar fenter o'r fath. Cawsom daith gerdded nodedig o gwmpas y pentref, a llawer o goesau bach blinedig i'w dilyn!

Bydd y Cylch Meithrin yn cwrdd mewn ystafell o fewn Neuadd y Pentref, ac os hoffai rhywun o'r ardal ymuno â ni ym mis Medi, mawr fydd y croeso. Am ragor o fanylion am Ti a Fi neu'r Cylch Meithrin, cysylltwch â Bethan ar 892954.

Creigiau 2000 CREIGIAU PUPILS IN MILLENNIUM PHOTO

Thursday October 7th was a memorable day for the pupils and staff of Creigiau Primary School, as a helicopter landed on the school field, amid great excitement. Then, everyone formed a giant 2000 on the football pitch, and stood patiently as the helicopter hovered just above the trees for the photographer to take the photographs.

It was also a memorable sight as everyone waved to the helicopter as it flew off to photograph the Village

Other millennium schemes being considered by Creigiau 2000 are, a path to the Recreation Field, landscaping in Creigiau and a commemorative plaque. For more information, contact Jen MacDonald 892830.



Gwaelod y Garth Neighbourhood Watch.

Gwaelod y Garth Neighbourhood Watch has been operating since June 1994. Neighbourhood watch is very much a community group, run solely by volunteers. Maintaining a community spirit by keeping in touch and looking out for each other provides for a pleasant and safer environment in which we live. The support for Neighbourhood Watch in the village is strong. Most villagers contribute a sum of £1 a year membership and receive a certificate which enables them to obtain a discount on home insurance. Some 456 homes receive a copy of the Watch Newsletter. Any information which helps prevent crime is published in the newsletter and we are grateful to the police for their help.

Neighbourhood Watch co-ordinators are responsible for delivering the newsletters to neighbours on their 'patch'. Without the co-ordinators, Neighbourhood watch could not function. New co-ordinators are always welcome, a co-ordinator for Heol Berry is particularly needed at the moment. Cindy Rees 811554

Amateur Gardening Society

Presently there is no Amateur Gardening Society within the locality although almost undoubtedly there would be scope for such a group. Through the society there could be a plant exchange, wholesale purchase of materials and equipment, arranging trips to the some of the wide variety of Gardening shows available and possibly even occasional lectures by experts. Most importantly there would inevitably be a sharing of knowledge and skill.

A meeting will be held in January to discuss forming this group.

If interested please Telephone Stuart Thomas on 891812

Creigiau Senior Citizens

*Calling All Senior Citizens In
Creigiau*

Are you over 60 and living in Creigiau?

Would you be interested in attending a group for senior citizens in the village?

A meeting has been arranged for 2.00pm. Thursday January 20th 2000 at the Church Hall, Creigiau to discuss the possibility of establishing such a group.

Creigiau has no facility specifically for our over 60s residents so why not come along to the meeting to let us know what you would like.

Tea and light refreshments will be served.

*For further information telephone
Mrs Glenda Meakin on 842404*

Community Councillor Names & Addresses

S. Thomas	10 Parc y Felin	Creigiau	891812
Mrs J. McDonald	Pen y Bryn Cardiff Road	Creigiau	892830
Mrs C. Willis	Llwyn y Pennau, Groesfaen		890770
D. Bowen	23 Maes Cadwgan	Creigiau	892069
J Canning	62 Parc y Fro	Creigiau	892464
Mrs. G.A. Rees	Llys y Coed, Heol Pantygored	Pentyrch	890571
P. Williams	Hendre, 4 Pantbach	Pentyrch	890040
Mrs A.M. Ashley	Vale View, Heol Pantygored	Pentyrch	890566
P.Davies	Llwyn Glas, Heol y Parc	Pentyrch	891408
J. C. Hughes	86 Maes y Sarn	Pentyrch	891351
E. Priday	7 Pantglas	Pentyrch	891493
T. Proctor	Wood Cottage	Gwaelod	813346
Ms G. Green	1 Miles Court	Gwaelod	813398

Community Council Clerk

Mrs. Y. Krip Council Office Police Station Penuel Rd. Pentyrch 891417

The Community Council meets on the 3rd Monday Monthly (except August). Details of Meetings are published in the Council's Notice Boards and in Local Post Offices. Council Offices are open to the public 9.30am to 11.30a.m. Tuesday to Friday