

ALL DIMENSIONS ARE IN mm UNLESS NOTED OTHERWISE  
 N.G.R E: 310185 N: 181507  
 CONCESSION REQUIRED NO

NOTES:

REV	Issued for Approval	CS	DW	DATE
A				29.06.17
	MODIFICATION	BY	CH	DATE

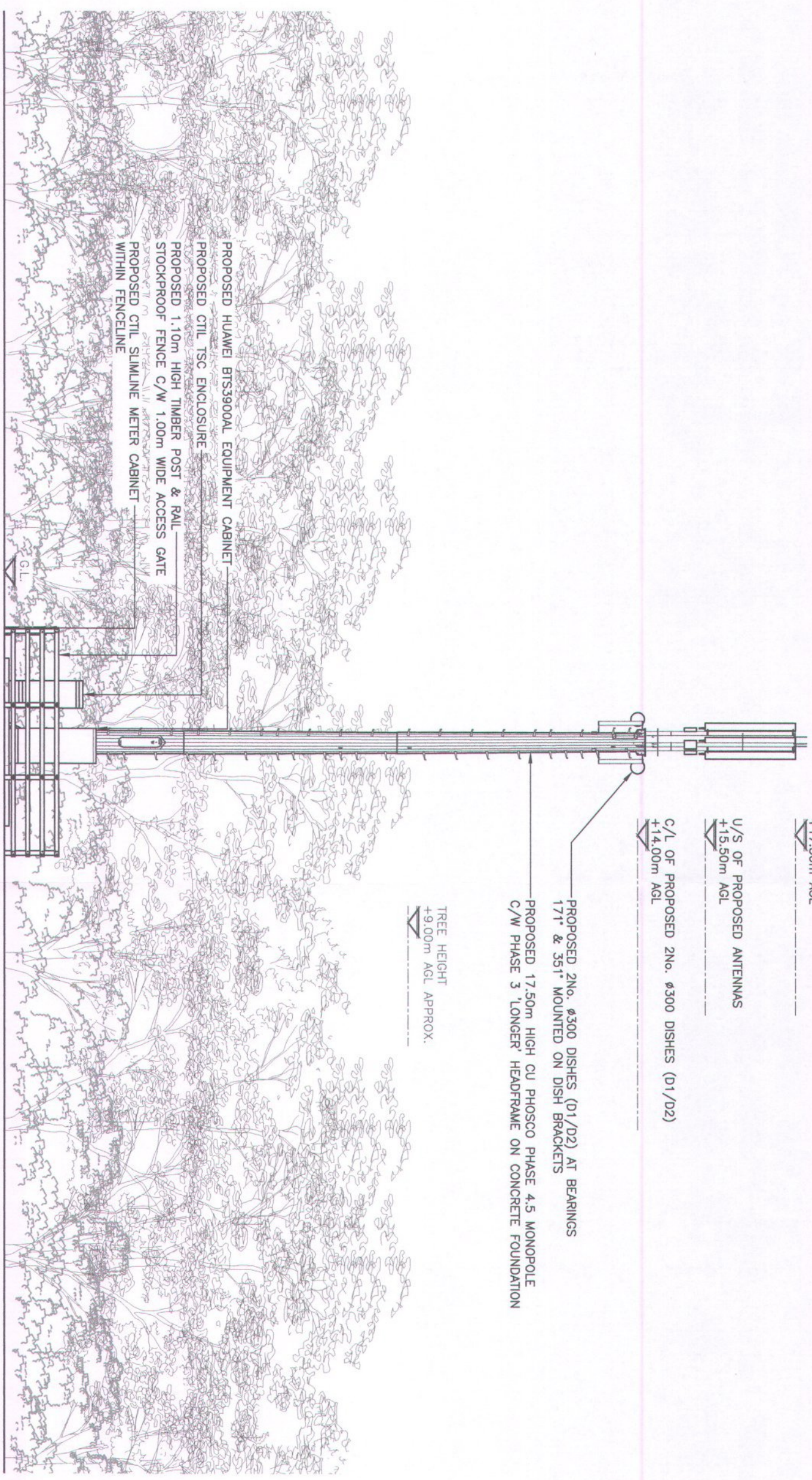
**CLARKE**  
**telecom**  
 Unit 5, Madison Place, Northampton Road,  
 Manchester, M80 5AG  
 Tel: 0161 785 4500  
 Fax: 0161 785 4501  
 Web: www.clarke-telecom.com

**vodafone**  
 CTIL - GIG

Cell Name	PENTRCH SPORTS ASSOCIATION	Opt.	-
Cell ID No	207743	TEF	050506
		VF	95386_0

Site Address / Contact Details  
 PENUEL ROAD  
 PENTRCH  
 CARDIFF  
 CF15 9LG

Drawing Title:	PROPOSED SITE ELEVATION		
Purpose of Issue:	PLANNING		
Drawing Number:	300	Dwg Rev:	A
Survived By:	DW	Original Sheet Size:	A3
Drawn:	CS	Date:	29.06.17
Checked:	DW	Date:	29.06.17
Issue:	A		



17/01734

PROPOSED SOUTH WEST ELEVATION

(1:100)

The drawings comply with TEF & Vodafone Standard ICNIRP guidelines.  
 Designed in accordance with CTIL document: SDN0008