

# COMMUNITY LINK

## CWLWM BRO

www.pentyrch.cc

PENTYRCH COMMUNITY COUNCIL



CYNGOR CYMUNED PENTYRCH

Gwanwyn Spring 2003  
Rhif No. 57

## When Will Broadband Arrive Here?

There are adverts everywhere asking people to sign up for Broadband, the government is trying to put us Online for a Better Wales but although we are only 6 miles from the middle of Cardiff it seems as if BT are not interested in us.

Anyone who uses the internet will know that on an ordinary dial-up phone line the service is slow and it prevents other people using the phone. But Broadband provides a fast connection to download documents and mail and high quality audio and video and is a boon for small businesses.

If you are interested in using Broadband make sure you are registered with BT by ringing 0800 800 150 and join the Community Council campaign to bring the service to our villages by e-mailing [broadband@pentyrch.cc](mailto:broadband@pentyrch.cc).

## Ddaw yr e-fro yma?

Mae'r llywodraeth am i Gymru achub mantais lawn ar y Rhyngwryd ac ar y cyfle mae e-fasnach yn ei gynnig ond er ein bod yn rhan o'r brif-ddinas nid oes sôn fod y gwasanaeth bandeang yn dod atom.

Os oes diddordeb gennych mewn defnyddio Bandeang cofrestrwch gyda BT drwy ffonio 0800 800 150 ac ymunwch yn ymgyrch y Cyngor Cymuned drwy e-bostio [bandeang@pentyrch.cc](mailto:bandeang@pentyrch.cc).

## GWOBRWYO ARLUNWYR

Cynhaliwyd cystadleuaeth gan Asiantaeth yr Amgylchfyd i dynnu lluniau ar gyfer calendr 2003. Ymhlith yr ennillwyr roedd Alix Crothers, Megan Owen ac Ashley Crothers o Ysgol Creigiau. Daeth Danielle Hitt o'r Asiantaeth i wobrwyo y disgyblion.

Roedd y lluniau ar gyfer calendr Rhif Ffôn Llifogydd fydd yn cael ei ddosbarthu i gartrefi yn Ne Cymru sydd mewn perygl.



The Environment Agency held a competition for young artists to draw pictures for their 2003 Calendar. Among the winners were Alix Crothers, Megan Owen and Ashley Crothers from Ysgol Creigiau. Danielle Hitt from the Environment Agency came to present prizes to the winners.

The pictures were for a Flood Line Calendar which is being distributed to all homes in South Wales which are at risk of flooding.

## CALENDAR ARTISTS



## NEW ICT SUITE

A 'state of the art' ICT suite is being installed at Pentyrch Primary School. It will contain 15 PCs with internet access, together with an interactive whiteboard. The class teacher will be able to demonstrate, or present lessons on the whiteboard and children can be taught as a class and work together on computers, rather than in ones and twos.

We will still retain computers in the classrooms, but this suite will increase the opportunities children have to use computers and enhance the quality of learning. It is planned to demonstrate the ICT suite to parents at a future Parents' Evening. Be sure to visit our [website](http://www.pentyrchprm.cardiff.sch.uk) [www.pentyrchprm.cardiff.sch.uk](http://www.pentyrchprm.cardiff.sch.uk)

# A Tribute to Miriam Evans 1945-2003

Born in 1945, Miriam started her life in Trehafod, sharing her early years with five sisters and two brothers. She met and married her husband, Clay, in 1964. Their married life began with a tour overseas – to England, the start of a tour that was to last 22 years, including time in Brunei, Hong Kong and Germany.

The return to civilian life raised the question as to where the family might live. The simple reason for choosing Gwaelod y Garth was the cherry trees in blossom at the entrance to the village which was in bloom when they made their first visit. They knew Gwaelod y Garth would be a special place for them.

As a post mistress, Miriam found her vocation in life. It is an occupation with many parts – she had to be a social worker, a village diplomat, a counsellor, an estate agent, a doctor, a source of information and even a Father Christmas. She fulfilled all these tasks and more. Perhaps, above all, she became a genuine friend to countless numbers of people who came into the Post Office.

Working in the village Post Office was an opportunity to serve the local community. A typical example of this service was the manner in which births were announced. Details of the new arrival would be posted on the notice board, surrounded by ribbons and balloons, a photograph always taken for the family.

Miriam's community spirit also found expression in her work for charity, not least the hosting of the annual raffle. This grew each year raising thousands of pounds for Bobath Cymru Wales, an organisation that was always very close to her heart. Mention must also be made of her work in organising the 'Big Breakfast' in aid of Breast Cancer Research.



A charity event, the Big Breakfast, took place in the village hall, Gwaelod y Garth, on March 7th. The Breakfast, to raise money for cancer research, was originally run by the late Miriam Evans. This year, her daughter, Sue, on the right of the photograph, carried on the tradition in her mother's memory with a team of dedicated helpers and raised £723 for Cancer Research Cymru.

## Pentyrch Open Gardens

The launch of this year's Pentyrch Open Gardens took place with a social evening in January for last year's gardeners and working party. We are pleased to have at least five new gardens again this year but would welcome anyone else who would like to open this year, contact details below. Money raised by this event is distributed to local groups and causes. Over the last three years in the region of £7000 has been distributed to groups and individuals throughout the whole age range in the village this is a community event please support us. Grant application forms are available (see below) and the closing date for applications this year is May 17th 2003.

Dates for your diary:  
Gardeners and helpers meeting  
March 28th 7.30pm

Plant Sale May 10th 10am (Plants to hall 6-7pm on 9.5.03).

Open Gardens Weekend July 12th & 13th tickets from Follis & Village Hall. All meetings are in the Village Hall - everyone is welcome.

Contact Helen Edwards 20891337,  
Bill Rodd (Grants) 20891584.

We are grateful for all Miriam was as a person and for all that she did. Her passing has left a gap in many lives and in the Gwaelod y Garth community. Clay, who has lost a partner, companion and rock, would like it to be known that having served a fifteen year apprenticeship under Miriam, will be carrying on the work at the Post Office.

Miriam was greater than the sum of her many parts. Beneath her various roles there were qualities of kindness, generosity, compassion, humility and above all, love. It was these that made her what she was and we are truly thankful.

Our thoughts are with Clay, his children and grandchildren.

[These words are taken from the dedication made by the Minister at the burial service. We are grateful that he has allowed us to use them in Community Link].



## The Induction of the New Vicar

The Revd. John Binny will be Inducted into the Incumbency of the Parish by the Bishop of Llandaff in St. Catwg's Church Pentyrch on Monday 31 March 2003 at 7.30 pm. He will begin his Ministry during the following week. From that date all enquiries about Parish affairs should be made to him at the Vicarage, Church Road, Pentyrch, CARDIFF CF15 9QF - Tel 029-2089-0318.

### The Induction Service

As, by tradition, the Parish invites his fellow clergy from both the Deaneries of Llandaff and Cowbridge (in which Deanery he currently serves) together with representatives of the Parish of St. Athan. there will be considerable demand for seats within the church. As the Induction Service requires there to be a procession around the church we will not be able to allow members of the congregation to stand at the back as we do at Christmas time. The service will, therefore, have to be an "all ticket" occasion. Parishioners wishing to obtain tickets should place their names on the lists placed at the back of each of the churches when they are open for services.

### Home Visits and Home Communion

During the period in which we have been without a Vicar it has not been possible to provide the benefit of home visits and home communion. In order to help the new Vicar rectify this situation as soon as possible a list is being drawn up of house bound parishioners who would like a visit from the Revd. Binny. If you or someone you know would like to have their name put on this list please give your name and address to one of the Churchwardens or to the Parochial Church Council Secretary, Gordon Longmore. Either leave a note at Plasnewydd, Church Road, Pentyrch (opposite the King's Arms), or telephone him on 029-2089-2047.

Gordon Longmore,  
Secretary Parochial  
Church Council

## Another Book from Gwaelod y Garth Author

**'It all started with the Taff', says Dr Mary Gillham, who lives in Gwaelod y Garth, speaking about her new book.** Mary was one of the first women to travel to the Antarctic but is better known in our communities for her frequent pieces in Community Link. Her previous book, *The Garth Countryside*, is popular with local people and walkers alike. Now, she challenges us to explore along the Taff with the help of a new book, **'A Natural History of Cardiff'.**

Interviewed by Roy Noble on BBC Wales, Dr Gillham chatted about the areas of natural beauty within the capital city, speaking of the changes to Cardiff Bay and her joy at the preservation of the natural environment in conservation areas like Forest Farm. Here, she told listeners, even the casual walker can see a vast number of birds – guaranteed in part by the seeds put out by the conservation workers.

The book is 'an incentive to escape the turmoil of urban life' without resorting to our cars. 'It is a tale of past and present', says Mary. For those with an interest in the history of the landscape, there are fascinating details. 'A general kick about area with worn patches that leads to the Butetown Community Centre' is linked to a history of canal and towpaths. Cannon, once made in the iron works in our area, were tested by aiming them across the salt marsh just below the quay at Cannon Wharf.

Right on our doorsteps we can find 'pristine parks, woodland, saline mud flats with wading birds, fresh water and its species, plants that belong here - and those that have been brought in with



ship's ballasts. The pages of Mary Gillham's book are a celebration of trees, plants, birds and animals – and there is more of everything than you might imagine in the green river pathway from the inland hills to the shore.

**A Natural History of Cardiff** is a detailed record of the capital city of Wales at the start of this new century. There are more than 500 pages of observation of the animal and plant life, 71 colour photographs together with around 300 intricate black and white sketches and line drawings, all by the author. Whether exploring along the river Taff on foot or sitting at home browsing, **'A Natural History of Cardiff'** is a book that anyone can dip into. It shows us that in spite of the urban maze, there are escape routes into the natural world. And if anyone wants to get a signed copy, Mary would welcome them at her cottage on the side of the hill in Gwaelod y Garth – though it might be sensible to telephone her first (029 20 810284) in case she is out exploring in preparation for the next book!.

Norma Procter

## CREIGIAU COMPANIONS

Creigiau Companions are now in their fourth successful year. We are a group of lively retired persons who meet in the Church Hall on alternate Thursdays at 2.15 p.m.

We have a varied programme of events and try to arrange speaker's etc., to suit all our members both male and female. Last year we enjoyed several musical afternoons, some very interesting speakers not to mention trips out and a couple of luncheon outings.

Our 2003 programme started very well, when several members of the choir helped our New Year's Party go with a swing; this was followed by a trip to the Panto in Cardiff. We have another round of interesting speakers lined up for the first half of the year and in June we will be enjoying a day on the Brecon Canal with a buffet lunch on board. (Non members are very welcome to join us on this trip). The first half of our year is brought to a close with a firm favourite a cream tea.

We are a very friendly group. Anyone is welcome to come along and join us. We pay no annual subscriptions, so it is very free and easy, but you can be assured of a very warm welcome a good cup of tea - and if you are lucky you may even get a lovely cake !

WHY NOT POP IN AND SEE FOR YOURSELF WE LOOK FORWARD TO MEETING YOU! YOU CAN FIND OUR MEETING DATES IN THE CHURCH HALL NOTICE BOARD OR:

Contact: Joyce King 02920 890806 or Margery Richards 02920 890685

## GOOD NEWS FOR CREIGIAU

We are pleased to announce that the "Good News Coffee Shop" was resurrected in February 2003. It is intended to hold the coffee mornings in the Church Hall on the third Saturday of every month from 10.00 am. We hope that these events will be self supporting, will help to bring the community together and enhance village life in general. It is also hoped that they will make a profit which will be put into the Church Hall restoration fund.

Entrance will cost £1.00 per head, which will include your coffee/tea and a cake or biscuits. We are looking for people who are prepared to help in any way and are open to any suggestions to make these coffee mornings successful. There will be a raffle and sales tables. If any organisation would like to have a sales table etc., this could be accommodated.

The Creigiau Companions will be manning the March sales table which will have an Easter theme.  
**SO COME ON CREIGIAU, LET'S ALL HELP TO REVIVE THE GOOD NEWS COFFEE SHOP AND MAKE IT A SUCCESS STORY NOT ONLY FOR OURSELVES, BUT TO HELP THE CHURCH HALL TOO!**

Margery Richards

### Ladies – Looking to make new Friends? Why not try the Creigiau W.I.?

Creigiau W.I. meets in Creigiau Church Hall every second Tuesday of the month at 7.30pm. Apart from our monthly meetings we enjoy various trips throughout the year ranging from afternoon visits to weekends away.

Our April meeting will be a wine tasting evening (Victoria Wine – look out for our posters).

Why not give us a try – the young and the not so young - are always welcome.

## VILLAGE POST OFFICES ARE IN DANGER OF EXTINCTION

### Question

What can each one of us do to save our Post Offices?

### Answers

1. Cancel your direct debits and pay all your bills over the counter. (Electricity, Gas, Rates, Water, TV).
2. Use the **Banking facilities** to pay in and draw out. (Lloyds, TSB, COOP, Barclays, Alliance and Leicester (Giro), Cahoot, (Smile, Nat West soon).
3. When Pension and Allowance Books are abolished, use the **Post Office Account 'card'**.
4. **National Savings** currently offer good interest rates. Use it.
5. Talk to your sub-postmaster/mistress. **"WE NEED YOU TO SURVIVE"**.
6. If Saturday morning opening is more convenient, say so! ( Gwaelod y Garth).

### Friends of Creigiau Primary School

#### Car Boot Sale: Saturday 5th April 2003

To be held in the school car park from 11.00 a.m. - 1.00 p.m.

Vendors will be charged £5.00 a pitch.

Booking forms are available from the school.

Places are strictly limited so early booking is advised.

Refreshments available

## Not for the retiring!

To all who are waiting to retire before turning to the game of bowls, we would like to ask you to reconsider.

At Pentyrch Bowling Club we offer a sociable sporting challenge to all ages. Our new, but growing, Junior Section takes children from the age of eight and last year produced our first batch of young player for the club teams. Players of other sports, such as rugby and football, will find bowls just as competitive and rewarding with a strong emphasis on strategy and tactics.



So if you are aged eight to eighty-eight (not an age restriction) and feel up to the challenge of concentration, stamina and accuracy why not come along?

Pentyrch Bowling Club extends a warm welcome to all our members, old and new, for the 2003 season.

The season starts with our traditional Spring Cheese and Wine on Sunday the 6<sup>th</sup> of April at 12:30 p.m. in

Pentyrch Rugby Club. On Monday the 7<sup>th</sup> the green will open at 6 p.m. - this event will be a club "Spoons" night to which we hope all members and potential members will come.

For further information please contact:

Iain Russell tel. 029 2089 1102

Bill Monington tel. 01443 365 1090

Lorna Howell tel. 029 2089 0749

## CLWB CRICED CREIGIAU CRICKET CLUB

The Club continues to grow and improve its on field performance as members of the Welsh Club Cricket Conference, South Wales League & Vale of Glamorgan Midweek Cricket League, now running 1<sup>st</sup>, 2<sup>nd</sup> and 3<sup>rd</sup> teams. We encourage everyone to develop to their full cricketing potential – not only in playing but also in administration, coaching, and umpiring. Our Junior section is the lifeblood of the Club and we welcome young players to our Under 9 Kwik Cricket and our Under 11, 13 and 15 league teams.

The Club continues to be actively involved in the management and development of our home at the Recreation Ground through membership of CRAMC and with the support of Pentyrch Community Council. We will not give in to vandalism!

Weekly winter nets at University of Glamorgan continue up until the start of the season (Sundays 10 am). If you would like to play, or feel you can contribute in any way, please come along and join in or contact myself or any committee member.

Peter Morgan  
Secretary  
029-20890828

## LITTER ON THE GARTH

I am a regular walker on the Garth Mountain and have been particularly concerned recently about the increase of litter along the Mountain Road between Gwaelod-y-Garth and Pentyrch. Although litter is flung down indiscriminately right along this road, an especially bad spot is at the layby for vehicles at about the half way point on the road. Lower down the road to the east where the road widens there is fly tipping material, and since Christmas there have been two burnt out cars (since removed) at this point. Also an abandoned car can currently be seen at the bottom of a field below the layby.

If it were not for the fact that a Pentyrch council worker comes early in the morning almost daily to clear the litter at the layby the mess would be unimaginable; even as it stands there is always litter to be seen here. Moreover the facilities provided for the public such as a table and bench have been

vandalised and set alight, and the waste bin is usually half empty in the midst of a sea of litter!

I am sure that others living in the area will agree with me when I say that the Garth Mountain is a tremendously important amenity for all of us, whether we walk on it or not, as it is for those people who are *bona fide* visitors to the area.

To have to employ a regular council worker to keep down the volume of litter serves to exemplify the magnitude of the problem. Clearly there are untoward happenings on the mountain which require closer monitoring by the council and police than is currently the case. Failure to take appropriate action will mean further deterioration of this important amenity.

Alwyn Jones, Keftom House,  
Main Road, Gwaelod y Garth



## PENTYRCH WOMAN'S INSTITUTE

Pentyrch Women's Institute has made a very good start to 2003. At the January meeting Haydn Walters came along to give us a talk on The Royal Mint and in February Amie Lush talked to us about "Cakes for Reasons and Seasons". The annual open Welsh Evening is being held on the first Wednesday in March when members socialise and sample "A Welsh bite". This year members will be providing the entertainment with Pentyrch W.I.'s own version of "The Weakest Link". A warm welcome is extended to any ladies who wish to come along to get a taste of what W.I. is all about. On the 18th March the Institute is hosting the Taff Group Spring Meeting at the Village Hall. Creigiau, Gwaelod, Tongwynlais, Radyr and Morganstown Institutes will be present. Derek Brockway the B.B.C. Wales Weatherman will be the guest speaker and Linda and Amy Coombes and company will be providing the entertainment.

The Wednesday Afternooners have been ten-pin bowling at Nantgarw and have visited the National Museum for lunch and a tour of the China and Painting sections. At the meeting on 19th March 2 - 4 pm in the Norman Follis Room, Boots are coming to give members some Beauty Therapy.

During March, seven of the members will be spending five days at Denman, W.I.'s College in

## Water Everywhere . . .

As we raise a glass of water to our lips we do not feel threatened by its presence trusting it to hydrate our bodies and sustain our lives.

However we are all aware of the dangers of water on a grander scale in the natural world. Examples include flooding, death by drowning, and the erosive properties of water denuding the landscape around us. These are obvious threats from water and leave physical evidence showing its effect. There is also an unseen danger caused by water, its effect devastating on the landscape involved. It represents a silent and invisible threat that only becomes apparent when it is too late to react or take precautions against it.

I am referring to Landslides some of which are caused by the build up of water underground reaching a critical level and leading to soil and rock debris flowing down slopes under gravitation influence. Areas that have steep slopes such as

mountainsides, particularly where they are cut by valleys are at most risk. Unfortunately we were witness to an example of a Landslide occurring on the eastern, flanks of the Garth Mountain in 2000 after heavy rain.



The climatic changes we are experiencing, leading to a wetter climate, may have resulted in ground water levels rising with the landslip occurring. Above the cottages high on the eastern face of the Garth rises a spring which flows in a gully to a marshy sump just behind the garden of the uppermost cottage. Could this have caused the landslide? Since restoration of the area, pipes now drain water from this marshy hollow away into the nearby stream.

Simon John Roberts

Oxfordshire pursuing various courses. Preparations are well in hand for the Institute's four-day trip to Brussels in May including a visit to The European Parliament.

We welcome new members to all the Meetings - Evening (Pentyrch Village Hall 7.45pm. the first Wednesday of the Month) Afternooners (Norman Follis Room the third Wednesday in the Month 2 - 4 p.m.). For any further details of Pentyrch W.I.'s Programme for 2003 etc., log on to Pentyrch W.I.

Play Wales Chwarae Cymru

## Children at Work

**Do you know the law governing the employment of people aged less than 16?**

The law states that the minimum legal working age is 14 years.

**Those under 16 cannot work:**

- Before 7 a.m. or after 7 p.m.,
- During school hours,
- More than 2 hours on an actual school day
- More than one hour before school starts
- More than 2 hours on a Sunday

- More than 8 hours on a Saturday or any day during the school holidays (for under 15 year olds this reduces to 5 hours)
- For more than 4 hours without a 1 hour break.

**It is unlawful for under-16s to work in:**

- Commercial kitchens
- Cinemas, theatres and night clubs
- Collecting money door to door
- Street trading (unless employed by their parents who have a permit)

- The personal care of residents in nursing or residential homes

Every Local Education Authority will have their own local bylaws governing the employment of under-16s. These are related to the Children and Young Persons Act (updated in 1998). Those intending to employ children aged under 16 years of age must apply for a permit from the Local Education Authority.

Tony Chilton

## PENTYRCH TUESDAY LUNCH CLUB



The 5<sup>th</sup> Birthday of the Luncheon Club held at the Village Hall was celebrated on Tuesday 11 February 2003. As always the volunteers, Beverley Eagle, Caroline Webster, Vivienne Goffee and Betty Nixon prepared and served a delightful meal.

There were about thirty members present and two invited guests Christine Friday and Angela Ashley. Barbara Willis the Co-Ordinator for Radyr & District Good Neighbour Scheme had arranged for a large cake to be iced by Claire Eagle, which was enjoyed with coffee.

Miss Williams accompanied her class from Pentyrch Primary School in a lively entertainment of old time favourites, with most diners joining in the singing.

If you would like to come along to the Luncheon Club please contact Barbara Willis Tel: 029 20842404.



**EXCLUSIVELY FOR LADIES**

**FOR THE BEST IN AROMATHERAPY, REFLEXOLOGY, REIKI,  
THERAPEUTIC MASSAGE AND INDIAN HEAD MASSAGE**

**GIFT VOUCHERS AVAILABLE AND INFORMAL TALKS GIVEN  
TO INDIVIDUALS AND LOCAL GROUPS ON THE ABOVE-  
MENTIONED HOLISTIC THERAPIES AS WELL AS ON  
STRESS MANAGEMENT AND RELAXATION**

**CONTACT MARJE ON (029) 2089 1007  
FOR FURTHER INFORMATION**

## Millennium Committee Dissolves but Events Go On

In the early weeks of the New Year the Gwaelod-y-Garth Millennium Committee officially dissolved. The remaining funds were donated to two village groups spanning the age ranges of the community – the Cylch Meithrin received over £100 to put towards a new climbing frame and safety mats and the Evergreens received the same sum to help fund outings for the more mature members of the village.

However – do not be disheartened – the committee may have disbanded but the desire to rekindle the community spirit of the village and to have a good old knees-up at the New Year remains. A new group is being formed to organise village activities and fresh faces are always welcomed. We are a good mix of like-minded people from all walks of the community, young, medium and not so young!

The focus of the new group will no longer be on one single event (the New Years Eve Party) but on a year long rejuvenation of village activities including, for example, a bonfire night do, a summer carnival, a winter's torchlight procession for the children, and so on.

Of course the success of such a group is up to you- the people of the community - to get involved whether as part of the organising group or support on the day. Anyone who wishes to help with the current project – the Easter Fayre – is welcome to attend a meeting to be held at the Gwaelod-y-Garth Inn (upstairs). Notification of this and other meetings to help organised events will be posted on strategically placed notices – keep your eyes peeled.

Fiona Santos



# LLWYBRAU FOOTPATHS



## Ewch i Gerdded i Fwynhau ein Cefn Gwlad Lleol

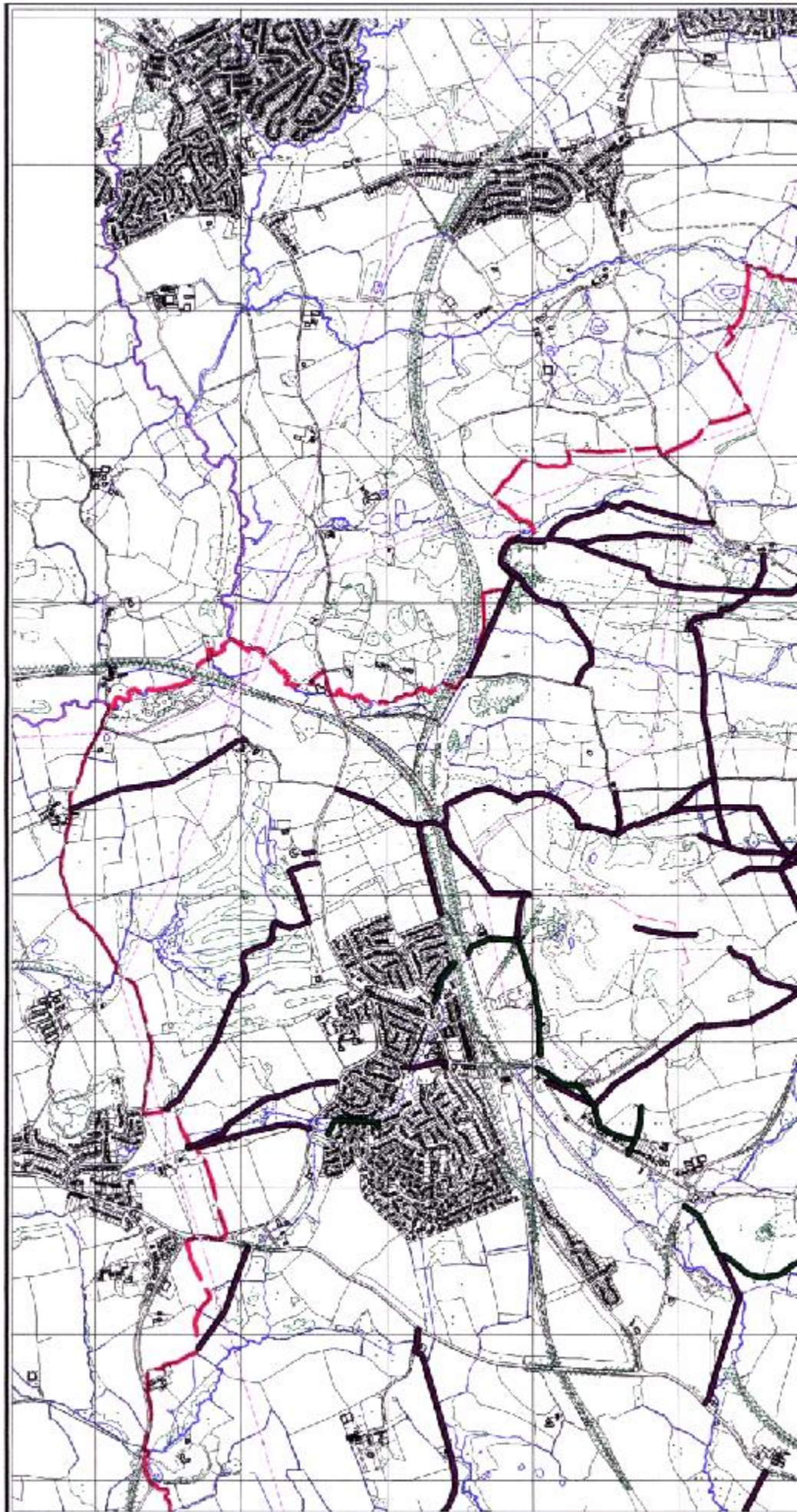
Mae'r Gwanwyn a'r Haf yn gyfle i ni unwaith eto grwydro llwybrau yr ardal a dyma fap o'r holl lwybrau yn ardal Cyngor Cymuned Penttyrch.

Y llinellau trwchus du yw'r llwybrau. Hefyd fe allwch weld heolydd yr ardal a'r llinell wedi ei thorri yw ffin Cyngor Sir Caerdydd.

The Spring and Summer will provide us with many opportunities to roam the footpaths in the area and here is a map of all the footpaths in Penttyrch Community Council area.

The heavy black solid lines are the footpaths. Also you can see the roads in the area and the broken line is the boundary of Cardiff County Council.

**GO WALKING TO  
APPRECIATE OUR  
LOCAL COUNTRYSIDE**



1 Kilometre





1 Milltir 1 Mile



# PENTYRCH AND DISTRICT LOCAL HISTORY SOCIETY

**March 26th:**

LLANERCHAERON, ABERAERON  
Alwyn Jones

**April 23rd:**

A.G.M. AND SOCIAL EVENING

**May 21st:**

GLIMPSES IN "THE MIRROR": (The  
North American Welsh Newspaper Y  
Drych 1851-2001)

Dr Bill Jones

**June 18th:**

HORATIO THOMAS, VICAR OF  
PENTYRCH (1834-1880)

Dr Elwyn Hughes

**7.30pm Horeb Chapel, Pentyrch**

Further information:

Don Llewellyn: 029 20890535



Members of the Historical Society talking to Havard Gregory following his talk about some of the characters Gwaelod y Garth

## A Snippet from the Staff

Well good morning Mrs Morgan, there's something I'd like you to do  
There's a pothole on Main Road and light number 4 is out too

Well hello Mr Locke, there's plenty of litter around  
Please could you clear it and get some chewing gum off the ground

Well Dear Mrs Krip, I'd like your assistance  
There's a planning application and I'd like Council's resistance.

Well Hi Mr Davies, I see you've repaired the fence again  
It won't help you know, those kids are just a pain

Good Morning Mr Evans, the square is looking fine  
Cricket's starting soon, will the ground be dry in time?

Good gracious Mr Llewellyn are you still on the beat  
Clearing footpaths of leaves for our slippery feet



Denise James, Secretary and  
Don Llywelyn, chairman of the  
Pentyrch Local History Society

### Bus Services to Cardiff

### Gwasanaethau Bysiau i Gaerdydd

#### StageCoach 136

#### Monday - Friday

#### Llun - Gwener

Creigiau	7.00	7.38	9.15		10.47				13.17		17.32	19.30	20.30
Pentrych	7.06	7.45	9.23	10.00	10.55	12.00	13.00	13.25	14.00	15.00	17.38	19.34	20.34
Gwaelod y Garth	7.11	7.50	9.27	10.04	10.59	12.04	13.04	13.29	14.04	15.04	17.44	19.38	20.38

TRAVELLINE 0870 6082608

#### Cardiff Buses 33b

#### Monday

#### - Friday

#### Llun

#### -

#### Gwener

Gwaelod y Garth	9.25	11.15	13.15	16.25
-----------------	------	-------	-------	-------

#### Shamrock x49

#### Monday

#### - Friday

#### Llun

#### -

#### Gwener

Creigiau	6.20	7.30	8.30	9.45	10.45	11.45	12.45	13.45	14.45	15.45
----------	------	------	------	------	-------	-------	-------	-------	-------	-------

#### Shamrock 138 - Sunday Dydd Sul

Pentyrch	9.50	11.00	12.00	13.40	16.10
----------	------	-------	-------	-------	-------



# Planning Applications

## Gwaelod y Garth

**02/02596/W** Mr. and Mrs. G. Young Bryn Taf School Lane  
Single storey side and rear extension to provide utility, cloakroom and conservatory

**03/00066/W** Mr & Mrs Alan Patterson c/o 2 Torrington Road, Llanrumney, Cardiff  
Dwelling - Land adjacent to, School Lane, Gwaelod Y Garth, Cardiff

**03/00229/W** Mr N King Rocky Bank Garth Hill, Pentyrch, Cardiff  
2 storey rear extension

## Pentyrch

**02/02396/W** Mr Philip Davies Ty Wennol Heol Y Parc  
Construction of proposed garden cellar and store

**02/02686/W** Mr & Mrs Aspden The Cottage Cefn Bychan  
Extension and refurbishment of single storey residential dwelling

**02/02689/W** Pinecroft Cattery Mountain Road  
Demolish existing cattery, erect new cattery on existing site

**02/02696/W** Mr C Board & Mr R Thomas Canada Lakes Pant Gored Farm Heol Pantygored

Fishing lodge with basement storage and lake maintenance vehicle parking, first floor flat and car park

**02/02747/W** Mrs Frederick Denley 33 Heol Y Pentre

New front and rear dormer roof extensions and new pitched roof extension. Renewal of planning permission no. 97/2232w

## Creigiau

**02/02608/W** Ms Jane Jenkins 1 Castle Close  
Proposed 2 storey side and rear extension

**02/02731/W** Mr and Mrs Clements Tan Dderi Maes Yr Hafod  
Two storey extension to front, with a single storey extension to the rear

**02/02759/W** Mr and Mrs Howson 28 Parc Y Felin Creigiau  
Single storey rear extension containing family room; two storey side extension containing garage, utility room and 1st floor bedroom

**02/02772/W** Mr & Mrs Scammell 19 Parc y Bryn  
Retention of boundary wall garage and utility room and 1st floor bedroom

## Others

**03/00275/W** N H P Securities Broadlands Nursing Home Llantrisant Road

50 bedroom elderly, mentally infirm unit : two storey building. (renewal of planning permission no. 96/1899w)

**T/00/2847** Tyn y Coed Quarry

The use of land for Waste Recycling incorporating the use of crushing and screening plant and associated production of aggregates and other materials, in addition to land filling and restoration as previously approved under Planning Consent T/99/2369/10.

**03/00017/W** Mr and Mrs Harvey Brook Cottage Nant-y-Fynnon, Capel Llaniltern  
Single storey side extension

**A/02/00182/W** Harris and Rowe Ltd Ynys Fach Taffs Well  
Display sign - Advert North East of, Ty Nant Road

## Permission Granted

**02/01519/W** Barratt South Wales Rhydlafar

11 proposed new dwellings and associated works.

**02/01676/W** Mrs D A Houlihan Tregwent Penuel Road  
Demolition of existing bungalow and develop two new dwellings

## Application Withdrawn

**02/01384/W** E Williams Thomas & Son Pantygored Farm Heol Pantygored. Proposed conversion of existing single story cattle barn to a 2 bedroom dwelling.

## THE GARTH DOMAIN

No. 19. March 2003

**'They're Over Here ...'**

**The Americans at Rhydlafar (1943-1945)**

Available at local shops  
or 029 20890535.

# Pentyrch Ladies

Pentyrch Ladies meet on the second and fourth Thursdays of the month in the Committee Room of Pentyrch Village Hall at 8pm. We enjoy various speakers, social events and craft evenings and welcome new comers. Dates for your diary:-

April 10 Easter Flowers - hands on demonstration

April 24 All you need to know about Wills (no meeting on the 8<sup>th</sup> May due to theatre trip)

May 22 Vets in Practice

June 12 A Village Walk - (hope for fine weather)

June 26 Strawberry Picking and Wine Tasting

July 10 Summer Meal

The group will be celebrating it's 25<sup>th</sup> birthday in November and extend an invitation to all previous and prospective Members to join us to celebrate. Better still why wait till November - come back now and meet up with old friends and make some new ones.

## Mobile Library

The area is served by Cardiff County Council Mobile Library every three weeks.

## Creigiau

Friday — 28 Mar,

9.30 - 10.30 Ffordd Dinefwr

10.35 - 10.55 Parc-y-coed

11.00 - 12.30 Post Office

1.40 - 2.30 Parc-y-Bryn

2.35 - 2.55 Parc Castell-y-Mynach

3.00 - 3.50 Ysgol Creigiau School

## Gwaelod y Garth and Pentyrch

Thursday — 13 March, 3 April

## Gwaelod y Garth

9.40 - 10.15 Post Office

10.20 - 10.50 Heol Berry.

## Pentyrch

11.00 - 12.15 Lewis Arms

12.25 - 12.50 Maes y Sarn

2.00 - 2.30 Bron Haul, Pentyrch

2.40 - 3.50 Bronllwyn, Pentyrch

Further Information Tel: 20872087

## PENTYRCH VILLAGE HALL

The busy hall was closed for two weeks in February to enable major improvement works to be carried out.

The work included replacing the central heating boiler and all the external doors and was funded by a grant from the W.C.V.A.



Gwyn Jones, Grants Coordinator and Barbara Rodd, Chairwoman, with the new boiler.

The hall is now back in action and the next fund raising event is a Quiz Night on Saturday, 29th March. Tickets £3.50 are available from committee members.

Further information about the hall is available from the Booking Secretary, Mr Ron Mowbray, 029 20891214.

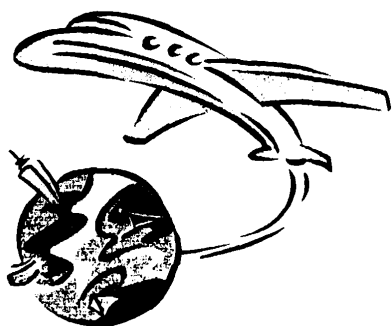
## PENTYRCH SHOW

**Saturday 6 September**  
Watch out for new categories!

## PHONE AND FLY

SPECIALIST TRAVEL CONSULTANTS

WORLDWIDE AND EUROPEAN  
FLIGHTS & HOLIDAYS



FOR A PERSONAL SERVICE CATERING FOR ALL  
YOUR TRAVEL REQUIREMENTS

**TEL: 02920 899 297**

**www.fleetwaytravel.com**

**SIANW@PHONEANDFLY.CO.UK**

ABTA NO—F5926 ATOL—2748

## OUR BAKERY

Diane and myself had toyed with the idea of an "in store" bakery for a while, but a visit to a trade show at the N.E.C. in Birmingham clinched it! The delicious aroma from the various bakery displays was the first thing we noticed at the entrance.

So it was that last November we had a dividing wall removed and following redecoration and refurbishment the rear of the shop was ready for the arrival of the new oven and display stand. Some of you will remember the small cafe we had in this area a few years back. This gave us the advantage of already having a kitchen in which to put the new equipment.

We always thought that the chance to buy fresh bread and cakes locally would prove to be popular, but I think it would be fair to say we were not prepared for the reaction! We were snowed under with orders, particularly in the run up to Christmas. I started baking at around 1am on Christmas eve to cope with the advance orders for the festive period. We were pleased that many people wanted to try the "speciality" breads and for the positive feedback (and repeat orders!) that we received. In addition to the "Rosemary and cranberry" and "Sun dried tomato" breads we probably cooked enough baguettes to encircle the village if laid end to end!

The day to day sales have remained healthy, particularly the various varieties of French bread. There are many new products being introduced by the company we deal with and we are keen to give them all a try on the shelves. We also bake savoury products, doughnuts of all varieties, cookies, scones Danish pastries and many other waistline enhancing items!

Can I take this opportunity, on behalf of the Follis family to offer our thanks to all our staff for their help and to all our customers for supporting this new venture so enthusiastically.

Gareth Follis.

## P.C.R. SKIPS

**Builders, Midi & Mini Skips**

**Competitive Prices**  
**Advice if required**

**Tel: 029 2089 2685**

**or call at**  
**Villa Offices, Bronllwyn,**  
**Pentyrch**



## PENTYRCH – HELSINKI EXCHANGE VISIT

Pentyrch Primary School is participating in the European Science Centre Schools Project. Schools from Cardiff, Helsinki, Barcelona and Lulea in Sweden are working collaboratively with their local science centres to develop new learning and teaching resources.

As part of the project the schools have arranged exchange visits. Fourteen children and three supervising adults from Pentyrch Primary visited Helsinki between 22<sup>nd</sup> and 28<sup>th</sup> February. We stayed at the Tikkurila Family Hotel which was ideal for the children, having a swimming pool, gymnasium, café and ten pin bowling rink as part of the complex.

A party accompanied us from Moorland School in Cardiff, who are also paired with a school in Helsinki.

We visited our partner school, Suutarila Primary. The children quickly made friends and enjoyed lessons in drama, music, woodwork and P.E. In the PE lessons the children played indoor hockey and in woodwork they made a traditional Finnish butter knife.

We spent two days at the Heureka Science Centre. The children enjoyed the “hands on” exhibits and the displays on flight. In the laboratory we experimented with chemicals. We also enjoyed two sessions in the science theatre entitled “It’s a Gas!” and “Why the cow doesn’t fly!” In addition, we saw two films in the I-Max Cinema, “Cosmic Voyage” took us on a journey to the outer limits of the known universe and “Adrenaline Rush” is about the science of risk taking, with some very memorable footage of base jumpers leaping from a cliff in Norway!

Our hosts had arranged a very full and entertaining programme for us. We visited the historical centre of Helsinki and spent an afternoon at the Korkeasaari Zoo. We were prepared for the weather. There was over 30cm of snow and daytime temperatures between –2 and –8 degrees Celsius.

The highlight of our visit was the day spent at the Talma Ski Centre. The children had the opportunity to have fun on the toboggans on the nursery slopes and to have a go at cross-country and downhill skiing. In addition, we could watch the snow boarders performing their tricks. Lunch was sausages cooked over an open fire. In near perfect conditions we had tremendous fun!

In April a party from Helsinki visit Cardiff and Pentyrch. We are preparing the programme and will ensure they have a memorable visit to Wales.

**Graham Renshaw** Headteacher,



**Skiing is not as easy as it looks!**



**Ceri James Abseiling at Manor  
Adventure**

## OUTDOOR PURSUITS

It has become something of a tradition for Year 6 pupils to enjoy an outdoor pursuits weekend at Manor Adventure in Shropshire. The visit usually takes place in June, following the SATs. The children take part in activities such as hill walking, climbing, abseiling, swimming, cycling and archery. The weekend is great fun and a real treat for the children. In addition, Year 5 pupils are visiting Llangrannog (the outdoor pursuits centre run by the Urdd) where as well as improving their Welsh, they will take part in a variety of outdoor sports and activities, including quad biking!

## PENTYRCH PRIMARY SCHOOL HIGHLIGHTS!

Our Harvest Festival was very well supported and thanks to the generosity of pupils and parents we raised over £100 to sponsor our ‘foster child’ in Senegal, Ameth.

As part of the National Film Week celebrations the juniors attended a preview of the film ‘Hey Arnold’.

Two ‘Artists in Residence’ from UWIC worked with Year 6 pupils designing and making gargoyles. The children’s work is now on display at UWIC, Cyncoed.

In November our pupils raised over £190 for ‘Children in Need’ by running a cake stall and holding a non-uniform day. Many of our children also supported ‘Operation Christmas Child’, donating gift-filled shoeboxes for distribution to children in some of the world’s trouble spots at Christmas.

P. C. Mario has visited school twice recently to speak to the infants about ‘stranger danger’ and road safety. He has also spoken to Year 6 about bullying.

Our Christmas concerts were very well received by parents, grandparents and invited guests. The juniors presented ‘Pantivity’, in which well-known pantomime characters told the nativity story. The infants presented ‘Are We Nearly There Yet?’ in which a family visited Bethlehem at the time of Jesus’ birth.

The School Choir sang at the Village Carol Service at St. Catwg’s. The collection raised over £200 for Ty Hafan and the Macmillan Nurses.

The juniors enjoyed a Christmas trip to the Sherman Theatre to see ‘Babe – the Sheep Pig’. The infants had a Christmas Party and were entertained by Goldini the Magician. There was also a very special visitor from Lapland. In January the infants visited the Pavilion Theatre in Porthcawl to see their production of ‘Cinderella’. FOPSA paid for coach transport to the theatre and for the entertainment at the infants’ party.

### PENTYRCH PRIMARY SCHOOL VACANCY FOR CO-OPTED GOVERNOR

The Governors of Pentyrch Primary School are seeking to co-opt a suitably experienced or qualified person on to the Governing Body. Ideally, the person should have experience in business or industry and be able to bring an “external perspective” to the work of the school.

Governors attend two full meetings per term and usually serve on a sub-committee, which typically would involve two further meetings.

If you are interested and would like further information, please contact the headteacher, Mr Graham Renshaw, on 029 20890292.



## Community Council Highlights

### A View in Sight

At long last the Council is pleased to announce the completion of the Viewing Platform on the top the Garth Mountain. Some time ago a site meeting was held on the Garth to agree on the location and sites to be included on the view point. As many of you will know, the view from the Garth changes depending on where you are standing. Too near to Cardiff and you can't see the Beacons, too near to Pontypridd and you can't see Penarth etc., etc. The ideal location was agreed and progress made.

The draft inclusions were drawn up and the construction of the plinth began. Many of you may have noticed that this was a slow process. Why slow? - because our 4 legged friends in the area took offence to the construction and insisted on rubbing layers of stone off before they were set! At one point our workmen were confronted by a group of black cows surrounding the plinth. So if you think there is a dent here or a bump there that is the animal world's contribution. However there is always a reason behind every action. Without the interference of the cows the plaque would have included Llanwern Steelworks! The plaque was engraved by KOLB Engravers, Cardiff and what a good job Mr Kolb has done. It includes direction points to the Beacons in the north, Steep Holm and Flat Holm in the south and the Severn Bridge in the east.

The official opening of the Viewing platform will be on the May Bank holiday - Monday 5<sup>th</sup> May 2003 and the Community

Council would like as many residents as possible to join us on a walk. Look out for more information in the village shops and notice boards.

### Wild Flowers

The Community Council have purchased and planted over 200 wild flower plugs in the hedgerows along Pantygored Road. Keep your eyes peeled for a colourful display - we hope!

### Footpath Signs

Cardiff County Council have supplied the Community Council with over 30 new footpath signs and posts. These will be installed as soon as possible subject to weather conditions.

### Pentyrch Community Council

#### Bronllwyn & Penuel Graveyards

The Council intend to carry out remedial works to unsafe graves and memorials in these graveyards.

Details of the proposed works may be obtained from the Clerk at The Police Station, 1 Penuel Road, Pentyrch, Cardiff CF15 9LJ. Telephone 029 2089 1417

### ADVERTISE IN COMMUNITY LINK

Community Link is delivered to 2800 homes in the area and is a valuable source of information.

#### Adverts

£15 6cm x 10cm

£30 12 cm x 10 cm

Tel: 029 2089 1417

## Request to Change Quarry Planning Permission

Taffs Well Quarry, now run by RMC, want an amendment to Clause 4 of the Legal Agreement which would have removed most heavy quarry traffic from the Pentyrch Hill to the new exit on Ty Nant Road by May 2003. A fall in the market means that the quarry have not reached the development stage that was anticipated. This means that the new access tunnel is physically impossible to build. RMC cannot, therefore, meet the Legal Agreement time scale agreed by Lafarge at the culmination of the community campaign. The legal obligation for the removal of the primary crusher from the southern rim to the base of the quarry (clause 8) is also impossible at this stage. Cardiff County Council are being asked for a deferment to May 2004.

Condition 21 of the planning permission requires the Council to carry out a regular review of the working schemes. A review has now been submitted by the company. Changes noted relate to problems of fencing and enclosure. A deferment is requested for obligations to provide an archaeology scheme. A survey has been submitted recording the old mines and there is an assurance that any archaeology on the site will be safe. The excavations will not now be as close to the mines as was originally thought.

Those of us affected by vibration from the blasts have long given up complaining. The Blasting reviews conclude that as there has been an absence of formal complaints, it can be assumed that drilling and blasting is having little impact on the surrounding community.

If anyone wants to comment on the deferment, they can write to Robin Crossley, Wood Street, Cardiff. CF10 1PS. tel. 029 20 871832 email StWilliams@cardiff.Government.uk

Norma Procter





## Penawdau y Cyngor Cymuned

### Golygfa mewn Golwg

O'r diwedd mae'r Cyngor yn falch i gyhoeddi cwblhad y Arwyddfan Olygfa ar ben yr Garth. Cryn amser yn ôl cynhaliwyd cyfarfod safle ar y Garth i gytuno ar y lleoliad a'r pwyntiau sydd yn cael eu cynnwys. Fel mae'n wybyddus mae'r olygfa o'r Garth yn newid gan ddibynnu ar eich lleoliad ar y mynydd. Os ydych ar ochr Caerdydd ni allwch weld Bannau Brycheiniog, ac os ewch i ochr Pontypridd mae Penarth yn diflannu o'r golwg! Cytunwyd ar y safle delfrydol ac aeth y paratodau yn eu blaen.

Cynlluniwyd braslun o'r arwydd a cychwynnwyd ar adeiladu y plinlh cerrig. Roedd nifer wedi sylwi fod hyn yn waith araf. Pam araf? - oherwydd bod ein cyfeillion pedair coes yn yr ardal wedi cymryd yn erbyn y gwaith ac yn benderfynol o wthio haenen o gerrig i ffwrdd cyn i'r sment galedu! Ar un achlysur roedd y plinlh wedi ei amgylchynu gan wartheg duon yn atal ein gweithwyr rhag parhau â'r gwaith. Felly os gwelwch ambell i dwll neu garreg o'i le - dyna gyfraniad byd yr anifeiliaid. Ond mae rheswm dros bob gweithred. Heb ymyrraeth y gwartheg byddai gwaith Dur Llanwern sydd ar fin cau ar y plac. Lluniwyd y plac gan gwmni KOLB Engravers, Caerdydd ac mae Mr Kolb wedi gwneud gwaith ardderchog. Mae'n cynnwys cyfeiriadau i Fannau Brycheiniog yn y gogledd ac Ynys Ronech yn y de a'r Bont Hafren newydd i'r dwyrain.

Bydd yr agoriad swyddogol o'r Arwyddfan ar ddydd Gwyl Banc Calan Mai, dydd Llun y 5ed o

Fai, 2003 a dymunai'r Cyngor Cymuned i gymaint o drigolion a phosib ymuno ar daith gerdded i ben y Garth. Edrychwch allan am ragor o wybodaeth yn siopa'n pentrefi ac ar ein hysbysfyddau.

### Blodau Gwylt

Mae'r Cyngor Cymuned wedi prynu a phlannu dros 200 o flodau gwylt yn y cloddiau ar hyd Heol Pantygored. Cadwch i wyllo am arddangosfa liwgar — gyda lwc!

### Arwyddion Llwybrau

Mae Cyngor Sir Caerdydd wedi rhoi dros 30 o arwyddion llwybrau a physt i'r Cyngor Cymuned. Byddant yn cael eu gosod mor fuan â phosib pan fydd y tywydd yn caniatau.

### Cyngor Cymuned Pentyrch

#### Mynwentydd Capeli Bronllwyn a Penuel

Mae'r Cyngor yn bwriadu gwneud gwaith i ddiogelu beddi a chofebau yn y mynwentydd hyn.

Ceir gwybodaeth am y gwaith a fwriedir oddi wrth Clerc y Cyngor, Gorsaf Heddlu Pentyrch, 1 Penuel Road, Pentyrch, Caerdydd. CF15 9LJ. Ffôn: 029 20891417

### HYSBYSEBWCH YN CWLWM BRO

Dosberthir Cwlwm Bro i 2800 o dai yn yr ardal ac mae'n gyfrwng ardderchog i rannu gwybodaeth Hysbysebion

£15 6cm x 10 cm

£30 12cm x 10 cm

Ffôn: 029 2089 1417



Merched y Wawr Cangen y Garth yn mwynhau  
noson o Fowllo Deg



Mari Lwyd  
Clwb y Dwrllyn yn y  
King's Arms yn  
dathlu'r  
Hen Galan

Clerk: Mrs. Y. P. Krip  
Gorsaf yr Heddllu  
1 Heol Penuel  
Pentyrch  
Caerdydd CF15 9LJ  
Ffôn: 029 20891417  
Ffacs: 029 20891417

## PENTYRCH COMMUNITY COUNCIL



CYNGOR CYMUNED PENTYRCH

Clerk: Mrs. Y. P. Krip  
Police Station  
1 Penuel Road  
Pentyrch  
Cardiff CF15 9LJ  
Tel: 029 20891417  
Fax: 029 20891417

### Cynghorwyr Cymuned - Community Councillors

Stuart Thomas	10 Parc y Felin	Creigiau	20891812
Carole Willis	Llwyn y Pennau, Groesfaen	Creigiau	20890770
Delme Bowen	23 Maes Cadwgan	Creigiau	20892069
Jeff Canning	62 Parc y Fro	Creigiau	20892464
Jim Prosser	29 Dol y Felin	Creigiau	20890576
Angela Ashley	Vale View, Heol Pantygored	Pentyrch	20890566
Peter Davies	Llwyn Glas, Heol y Parc	Pentyrch	20891408
Gill Rees	Llys y Coed, Heol Pantygored	Pentyrch	20890571
Nicholas Webb	30 Bronllwyn	Pentyrch	20891216
Penri Williams	Hendre, 4 Pantbach	Pentyrch	20890040
Eric Priday	7 Pantglas	Pentyrch	20891493
Tom Procter	Wood Cottage	Gwaelod y Garth	20813346
Gill Green	1 Miles Court	Gwaelod y Garth	20813398

### Council Meetings

The Council meets on the 3rd Monday Monthly (except August). Details of meetings are published in the Council's Notice Boards and in local Post Offices. Council Offices are open to the public 9.30am to 11.30am, Tuesday to Friday.

### Cyfarfodydd y Cyngor

Mae'r Cyngor yn cwrdd ar drydydd dydd Llun bob mis (heblaw Awst). Dangosir manylion y cyfarfodydd yn Hysbysfyddau'r Cyngor ac yn y Swyddfeydd Post lleol. Mae Swyddfeydd y Cyngor ar agor i'r cyhoedd o 9.30am i 11.30am, dydd Mawrth i ddydd Gwener.

### On the Web — Ar y We

[www.pentyrch.cc](http://www.pentyrch.cc)  
[www.cantorioncreigiau.org.uk](http://www.cantorioncreigiau.org.uk)  
[www.creigiaufootballclub.net](http://www.creigiaufootballclub.net)  
[www.creigiau.org.uk](http://www.creigiau.org.uk)  
[www.pentyrchprm.cardiff.sch.uk](http://www.pentyrchprm.cardiff.sch.uk)

[www.cardiff-info.com](http://www.cardiff-info.com)  
[www.cwlwm.com](http://www.cwlwm.com)  
[www.pentyrch.org.uk](http://www.pentyrch.org.uk)  
[www.pentyrch.net](http://www.pentyrch.net)

### Cwlwm Bro Community Link

Last date for entries in the next issue is 3 June 2003.

Articles should be limited to under 250 words where possible and should be sent to the Council Clerk or to any Councillor.

e-mail:

[clerk@pentyrch.cc](mailto:clerk@pentyrch.cc)

#### Editorial Board

Angela Ashley, Gill Rees, DelmeBowen, Tom Procter, Stuart Thomas, Gillian Green, Penri Williams

*The views expressed in the Community Link are not necessarily those of the Community Council.*

## CONTACTING THE POLICE

In recent months it has become apparent that numerous residents in this area do not contact the police to report incidents that they have witnessed or are directly involved in. Some confusion may lie with which number to dial:

1. In an emergency or if a crime is taking place – dial 999
2. To report a crime that has already taken place – dial 029 2022211 [Fairwater Police Station]
3. For non urgent enquiries contact Pentyrch Police Station – dial 029 20890753

Every time the police are contacted via the 999 or 222111 system the call is logged and an incident is created on the police computer system. The calls are prioritised and passed to the patrol officers who will attend.

Recently certain incidents have occurred particularly in the Pentyrch area. For example there have been anti-social behaviour and scrambler annoyance which have occurred but unfortunately these incidents have not been officially reported to the Police.

The benefits of contacting the police are two fold, firstly if necessary a police patrol will be directed either at that time or as soon as practicable. Secondly, calls to the police raises the awareness of problems in the locality and provides the Police with a true pattern of crime / problem analysis.

The police rely heavily on help from the public to reduce crime and anti-social behaviour. Some residents may feel that they do not want to pass their personal details to the police for fear of reprisals. Anonymous information does make the police's job comparatively more difficult but it is still very useful as it does allow the police to patrol certain hot-spots.